



CHASSIS | 605HP

NEWMAR CRUISE

SUIT



TOURING  
2021 Essex Luxury Motor Coach

TOURING  
SPARK  
CHAS

2021  
D  
RT  
E  
BOSE  
SOUNDBAR

BOSE  
SOUNDBAR

T  
WIN  
HP  
FORT DRIV

RAILS  
ING



E s s e x



## The Pursuit of Luxury

In sophistication, style, and comfort, the 2021 Essex stays ahead of the pack. You'll cruise with Comfort Drive™ steering and get there easily with memory settings for the captain's seat, pedals, steering column, and mirrors. You can coast with an easy mind thanks to safety features like Mobileye® lane departure warning system, OnGuard™ collision mitigation technology, adaptive cruise control, and automatic high-beam headlights. Every Essex is built on a Spartan® chassis with a 605 HP diesel engine. And with six floor plans available, you can find the one that lets you tour the country the way you want.





## A Resort, Wherever You Are 2021 Essex

Starting with its full-paint Masterpiece™ finish exterior, the Essex seamlessly blends style and function. A 20K hitch for towing a car gives you the freedom to roam. Plenty of larger windows offer natural light—with the option for more windows in the kitchen and above the bed. The air leveling control system helps you reach your destination smoothly, and inside, the glass dash instrument panel gives you plenty of clarity into your coach.

*Winchester full-paint Masterpiece™ finish*

## The Path to Elegance

The cockpit of the Essex takes you places comfortably with heated and cooled Ultraleather® captain's chairs—and an optional massage feature. Back through the living quarters, you'll find entertainment features including a retractable Samsung® 4K LED TV, Blu-ray player, and Bose® 700 soundbar with Bose® 500 series subwoofer can be enjoyed from the optional dual recliners sitting opposite a sofa. Three 15M Penguin™ heat pump central air conditioners keep things cozy, while a luxury tile plank floor is found throughout the coach. In rear-bath floor plans, a cathedral ceiling adds more height.



*\*The furniture in your coach will differ slightly from the images.*

*Floor plan 4551 with Winchester décor and Ginger Glazed Cherry high-gloss cabinetry*



*Turn off lights, lower shades, raise the TV, and turn on accent lights with our new Theater Mode functionality.*

## Out in Front

Leading the way, the cockpit of the Essex offers guidance via a touchscreen navigation system—including a monitor on the passenger side. A JBL sound system brings crisp, clean sound to your favorite traveling music. A Samsung® tablet puts control of your coach at your fingertips, including electronics, lighting, shades, keyless entry, and more. And your devices stay juiced with wireless charging pads on both the driver and passenger sides. On top of that, internet connectivity and a Wi-Fi booster come standard.





## A Perpetual Feast

Whether you're refueling after a day on the road or simply enjoying a cheat day, the Essex kitchen is loaded with cooking features to make any chef envious. A recessed electric two-burner induction cooktop and stainless steel GE Advantium® convection microwave make cooking a breeze. A host of hardwood cherry cabinetry—complete with soft-close doors and raised panels—adorns the kitchen throughout, including matching wood overlays on the doors of the Whirlpool® refrigerator and optional dishwasher. Pull-out pantry shelves, concealed LED lighting, and a Delta® Touch2O® round out the conveniences in this kitchen.





## A Place to Unwind

No matter how you spend your day, the luxurious master suite of the Essex will be waiting to welcome you. A king-size Sleep Number® adjustable mattress and quilted bedspread make it easy to wake up fully rested. Wireless charging stations are built into both nightstands, and a large dresser offers plenty of space in the form of six soft-close drawers. Want to take in a little entertainment before lights out? A Samsung® LED TV, Blu-ray player, and Bose® Bluetooth®-compatible soundbar let you immerse yourself.



## Indulge at Your Pace

With so many luxurious features in the master bath, you may not know where to begin. When partnered with elegant design, the large shower space feels practically spa-like, with an Aqua Miser® warm water conservation system, full tile walls and floor, and a fold-down seat. Super-polished countertops surround dual sinks. Behind a cabinet door, you'll find a smartly hidden stacked Whirlpool® washer and dryer. Certain floor plans also greet you and your guests with a mid-ship half-bath, featuring many of the same comfortable features as the master.







## Enjoy the Outdoors

For all the beauty and luxury of the interior, the Essex makes even the outdoors more enjoyable. Dual Girard® Nova side awnings—with wind sensors and LED lights—help keep you out of the sun and other elements. A Dometic® pull-out cooler comes standard, and if you're interested in having people over to watch the Tour or any other event, an optional outdoor entertainment center brings you a Samsung® TV and a soundbar. And no need for security concerns if you're in for a quiet night. A doorbell lets you know when visitors have arrived, and a keyless lock with a touch pad offers even more convenience. An optional security system can add even more peace and quiet. This is all powered by a 12.5 kW Cummins Onan® diesel generator with auto changeover, so you can bet on constant power.

# Exterior and Interior Décor



**DUTTON EXTERIOR**

*Awning Color: Linen Tweed*



**TROVE EXTERIOR**

*Awning Color: Linen Tweed*



**WINCHESTER EXTERIOR**

*Awning Color: Charcoal Tweed*



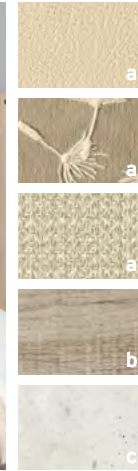
**WINDHAM EXTERIOR**

*Awning Color: Charcoal Tweed*



**DUTTON INTERIOR**

*a. Furniture/Fabric b. Flooring c. Counter Top*

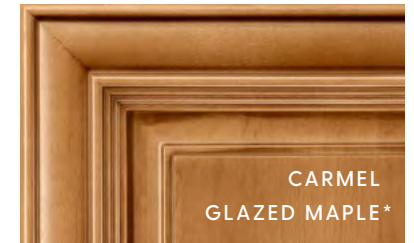


**TROVE INTERIOR**

*a. Furniture/Fabric b. Flooring c. Counter Top*



PEARL  
GLAZED MAPLE



CARMEL  
GLAZED MAPLE\*



GINGER  
GLAZED CHERRY\*

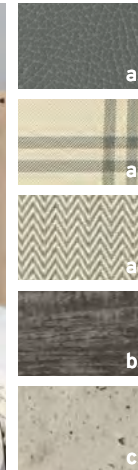


SABLE  
MAPLE\*



**WINCHESTER INTERIOR**

*a. Furniture/Fabric b. Flooring c. Counter Top*

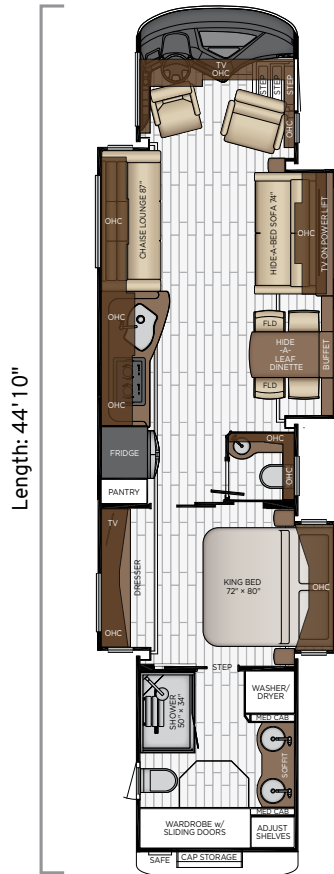


**WINDHAM INTERIOR**

*a. Furniture/Fabric b. Flooring c. Counter Top*

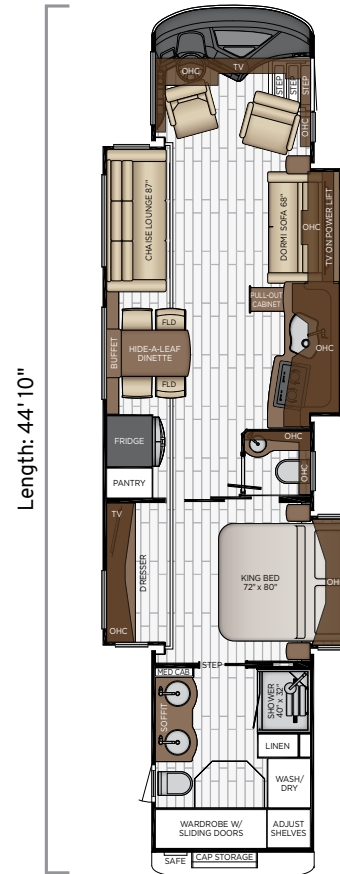
\*Available in High Gloss or Matte Finish

# Essex



## 4533

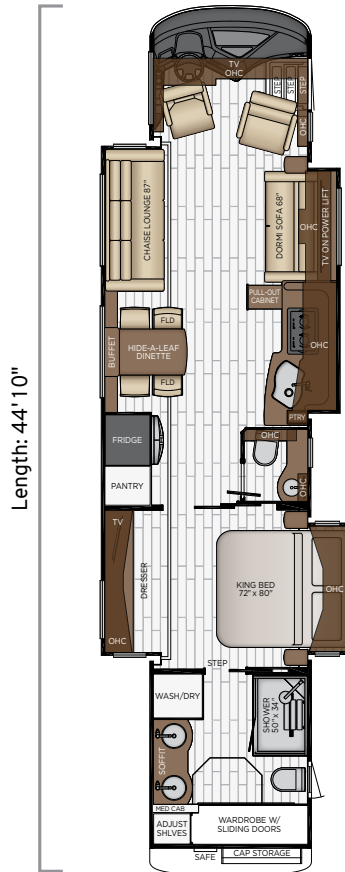
Length	44'10"
Width	101.5"
App. Overall Height	13'04"
Interior Width	95.5"
Interior Height	83"
Grey Tank	80 gal.
Sewage Tank	60 gal.
Water Tank	105 gal.
Furnace	50,000 btu



## 4543

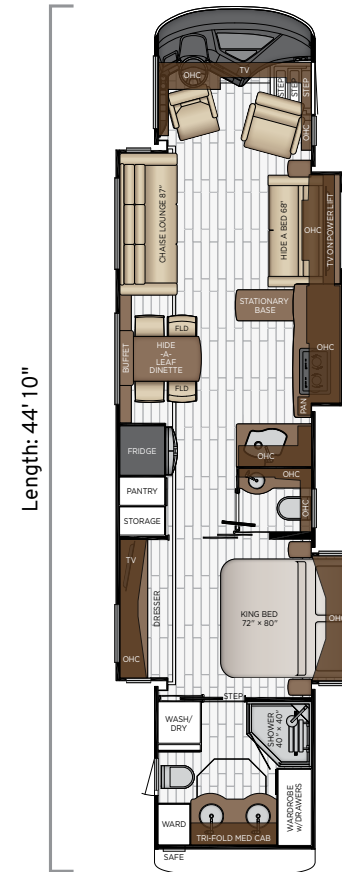
Length	44'10"
Width	101.5"
App. Overall Height	13'04"
Interior Width	95.5"
Interior Height	83"
Grey Tank	80 gal.
Sewage Tank	60 gal.
Water Tank	105 gal.
Furnace	50,000 btu

# Floor Plans



## 4551

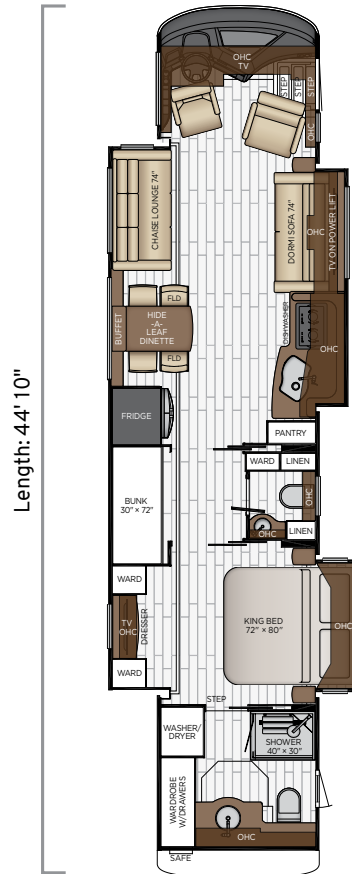
Length	44'10"
Width	101.5"
App. Overall Height	13'04"
Interior Width	95.5"
Interior Height	83"
Grey Tank	80 gal.
Sewage Tank	60 gal.
Water Tank	105 gal.
Furnace	50,000 btu



## 4569

Length	44'10"
Width	101.5"
App. Overall Height	13'04"
Interior Width	95.5"
Interior Height	83"
Grey Tank	80 gal.
Sewage Tank	60 gal.
Water Tank	105 gal.
Furnace	50,000 btu

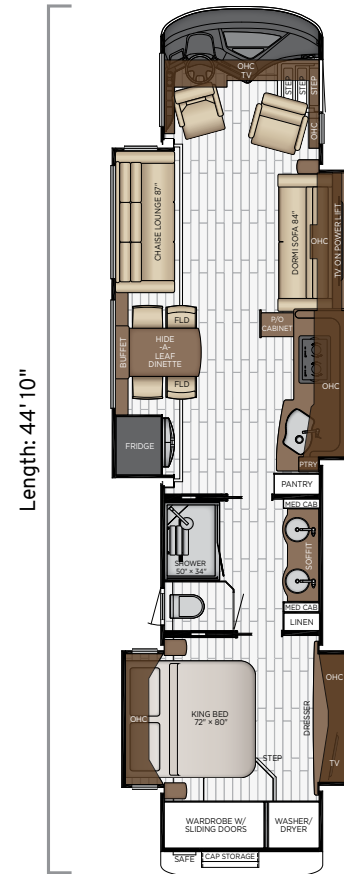
# Essex



Length: 44' 10"

## 4578

Length	44'10"
Width	101.5"
App. Overall Height	13'04"
Interior Width	95.5"
Interior Height	83"
Grey Tank	80 gal.
Sewage Tank	60 gal.
Water Tank	105 gal.
Furnace	50,000 btu



Length: 44' 10"

## 4583

Length	44'10"
Width	101.5"
App. Overall Height	13'04"
Interior Width	95.5"
Interior Height	83"
Grey Tank	80 gal.
Sewage Tank	60 gal.
Water Tank	105 gal.
Furnace	50,000 btu

# Floor Plans

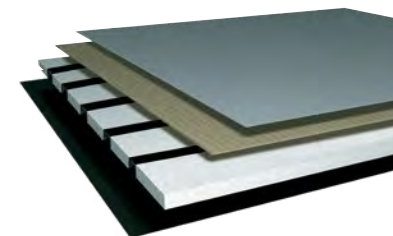


# Quality You Can Feel

Like a fine home, the 2021 Essex is framed 16 inches on center, and is covered by a fiberglass roof with walkable decking and an integrated gutter rail.

## BASEMENT

Cargo Liner  
 3/8" Floor Decking  
 1 1/4" Bead Foam  
 Galvanized Sheeting (Prevents Distortion)



FLOOR PLAN	ENGINE HP	AXLE RATIO	FUEL CAP.	WHEEL BASE	FRONT GAWR	REAR GAWR	TAG GAWR	GVWR	GCWR	APP. UVW	APP. NCC
4533	605	4.3	150 gal.	292+TA	20000 lb.	20000 lb.	14000 lb.	54000 lb.	74000 lb.	47100 lb.	6900 lb.
4543	605	4.3	150 gal.	292+TA	20000 lb.	20000 lb.	14000 lb.	54000 lb.	74000 lb.	47000 lb.	7000 lb.
4551	605	4.3	150 gal.	292+TA	20000 lb.	20000 lb.	14000 lb.	54000 lb.	74000 lb.	47000 lb.	7000 lb.
4569	605	4.3	150 gal.	292+TA	20000 lb.	20000 lb.	14000 lb.	54000 lb.	74000 lb.	46700 lb.	7300 lb.
4578	605	4.3	150 gal.	292+TA	20000 lb.	20000 lb.	14000 lb.	54000 lb.	74000 lb.	47000 lb.	7000 lb.
4583	605	4.3	150 gal.	292+TA	20000 lb.	20000 lb.	14000 lb.	54000 lb.	74000 lb.	47000 lb.	7000 lb.

The content in our literature depicts and describes products that are subject to change. For the most recent images and information, please visit [NewmarCorp.com](http://NewmarCorp.com).

Lengths, heights, widths, and dry weights are approximate. Weight will vary based on optional equipment added to the above base weight.

**GAWR:** Gross Axle Weight Rating is the maximum permissible weight for an axle.

**GVWR:** Gross Vehicle Weight Rating is the maximum permissible weight for a fully loaded motor coach.

**GCWR:** Gross Combination Weight Rating is the value specified by the manufacturer of the vehicle as the maximum allowable loaded weight of this motor coach and any towed trailer or towed vehicle.

**UVW:** Unloaded Vehicle Weight is the weight of this motor coach as built at the factory with full fuel, engine oil, and coolants. Does not include cargo, fresh water, propane gas, or dealer-installed accessories.

**NCC:** Net Carrying Capacity is the maximum weight of all occupants, including the driver, personal belongings, food, fresh water, waste water, propane gas, tools, tongue weight of towed vehicle, dealer-installed accessories, etc., that can be carried by the motor coach.

**Specifications supplied by the chassis manufacturer.**

**Essex R-Values:**

Roof R-Value = 24

Sidewall R-Value = 11

Floor R-Value = 16

Basement R-Value = 4



# Features and Options

## EXTERIOR



### EXTERIOR FEATURES

Full-Paint Masterpiece™ Finish with Cut and Buff and Beta Fusion Protection on Front Cap

Convex Exterior Chrome Mirrors with Remote Control, Defrost, Turn Signals and Side-View Cameras

Chrome Power Baggage Door Locks, Keyless Entrance Door with Touch Pad and Doorbell

Entrance Door with Automatic Step

Rear Hitch for Towing Car

Assist Handle at Entrance Door

Dual Latched Front Entrance Door with Power Flush Stepwell Cover

Mud Flaps

Rear Protective Tow Guard with Stainless Steel Newmar Name Cutout

Undercoating

Hydraulic Leveling Jacks

Stainless Steel Exterior Trim Pieces and Entrance Door Kick Panel

Hammock Backer

Storage Bins in Pegboard Compartment

Holding Tank Levels Displayed in Exterior Water Works Compartment

### OPTIONS

Patio Hammock Package

Stainless Steel Trim Kit for Exterior Compartment Doors

Flagpole Bracket

Storage Tray 26" X 90" Power Location-Bay 2\*

Storage Tray 26" X 90" Power with Shelf in Top of Compartment, Location-Bay 2\*

Storage Tray 26" X 91" Non-Power Location-Bay 2\*

Storage Tray 26" X 91" Non-Power with Shelf in Top of Compartment, Location-Bay 2\*

Storage Tray 40" X 90" Power, Location-Bay 3\*

Storage Tray 42" X 91" Non-Power, Location-Bay 3\*

Storage Tray 43" X 56" Non-Power, Location-Bay 4\*

### CONSTRUCTION FEATURES

Fiberglass Roof and Integrated Gutter Rail

Gelcoated Fiberglass Exterior Sidewalls, Front and Rear Caps

Aluminum-Frame Sidewalls and Roof Construction, 16" on Center

5/8" Foam Insulation Laminated in Sidewalls and Ceiling

Polar Pak R19 Batten Insulation on Roof

Automatic Mechanical Lock Arms on Non Hydraulic Slideout Rooms-Paddle Style

Egress Door with Ladder System

Essex Dash



## WINDOWS, AWNINGS & VENTS

Frameless Double-Pane Tinted Safety Glass Windows

Fan-Tastic® Vent with Rain Sensor with Hardwood Louvered Cover in Kitchen, Bathroom and Enclosed Stool Room

Skylight Above Shower\*

Girard® Package-Two Nova Side Awnings with Window Sensor, Remote Control and LED Lights

Girard® Slideout Covers, Entrance Door and Power Window Awnings\*

Large Non-Ventilated Living Room and Dinette Windows

One-piece Tinted Windshield

Driver Side Power Window

### OPTIONS

Kitchen Window

Window Above Bed Concealed Behind Sliding Doors

## CHASSIS FEATURES

Air Leveling Control System

Alcoa Dura-Bright Aluminum Wheels

Automatic High Beam Headlights

Electronic Chassis Information Center in Dash

Electronic Stability Control

Cummins Connected Diagnostic System

Cruise Control

Comfort Drive™ Steering with Power Column and Adjustable Control

Recessed Fuel Fills with Crossover to Fill from Either Side

Back-Up Alarm

Anti-lock Braking System

Chassis Battery Disconnect

Automatic Headlights On/Off

Push-button Engine Start

Glass Dash Instrument Panel

OnGuard™ Collision Mitigation Adaptive Cruise System with Adj. Following Distance Control

Tire Pressure Displayed on Glass Dash

Memory Settings for Driver Seat Pedals, Steering Column and Mirrors

Mobileye® Displayed on Digital Dash via Xite Radio Interface

Mobileye® Lane Tracking and Lane Departure Warning System

Power Tilt and Telescope VIP Smart Steering Wheel

Spartan® K3, Tag Axle, 605Hp, 45' Essex

### OPTIONS

Curt Spectrum Integrated Brake Control

## AIR CONDITIONING & HEATING

Three 15M Penguin™ Heat Pump Central Air Conditioners with Remote Control Thermostat

Hydronic Zone Diesel Heat with Continuous Hot Water

Dash Heater and Air Conditioner

Driver and Passenger Dash Overhead Ventilation System

Roof Air Conditioning Drainage System

Electric Radiant Heat Installed Below Main Floor Tile

## ELECTRICAL FEATURES

12.5 kW Cummins Onan® Diesel Generator with Auto Changeover on Hydraulic Slideout Tray

10 Watt Solar Panel to Charge Chassis Battery

50 Amp Electrical Service with Flexible Cord with Automatic Transfer Switch

Eight 6-Volt House Batteries on Pull-Out Tray

Battery Disconnect Switch for House Battery

3000 Watt True Sine Inverter

12 Volt Auxiliary Receptacle on Dashboard

Emergency Engine Start Switch

Engine Block Heater

Exterior Security Lights

Mid-ship Side Turn Signals

LED Lights Recessed in Ceiling and Underneath Overhead Cabinets

LED Lighting in Pull-Out Pantry, Kitchen and Bathroom Base Cabinets

Accent Lights in Feature Ceiling, Lambrequins, Kitchen, Bed Base, Fascia Trim and Under Dash

Reading Lights at Head of Bed-Dimmable with Adjustable Aim

Lighted Vanity Mirrors

Manually Operated Hold-To-Run Slideout Switch

Automatic Generator Start on Low Battery or Temperature Setting

Cable TV Connection

Interior Courtesy Lights

USB Outlet at Dash for Driver Use

110 Volt/USB Outlet at Head of Each Bunk Area\*

110 Volt Recept in Bed Overhead with Two Pass-Through Ports

KIB Touchscreen Interior Light and Shade Controls

Power Rewind Wheel with 50' Cord\*

Secondary Multiple Touchscreen in Bedroom

SilverLeaf Multiplex Electrical Wiring System

Solar Prep with Six Gauge Wire from Roof to House Battery Compartment

Spare Fuses in Chassis and House Fuse Panels



LED Lights Installed Below Under Door Side Slideouts

LED Lights in Exterior Storage Compartments on Automatic Switches

Exterior LED Accent Lights Above Rear Tow Guard

LED Docking Lights with Stainless Steel Trim

Rear Hitch Docking Light

Wireless Charging Mat Built into Passenger Console

High Power USB Charger at Dinette and Bedroom Nightstand

Wireless Charging Mat into Dash and Nightstand Tops

Transfer Switch with Surge Protector

### OPTIONS

Four Flexible 100 Watt Solar Panels on Roof

30 Amp/120 Volt Cord Connection for Stacker Trailer

LED Strip Lighting Installed Under Off Door Side Slideouts

Roof Mounted Spotlight

## PLUMBING & BATH FEATURES

Demand Water System

Sewage and Grey Holding-Tank Rinse

Dometic® Concerto Electric Flush or Macerator Stool\*

Full Tiled Shower Walls and Floor

Fold-Down Shower Seat

Assist Handle in Each Shower

Water Filter for Entire Unit

Exterior Convenience Station

Auto Fill for Fresh Water Tank

Bladder Tank for Water Pump System

Power Water Hose Reel

Aqua Miser® Shower System

Hot Water Line to Generator Area\*

ManaBloc Plumbing System

Touch Kitchen Faucet

### OPTIONS

RV Sanicon Turbo System



**INTERIOR FEATURES**

Designer Feature Ceiling and Cathedral Ceiling with Added Height on Rear-bath Floor Plans*
Tile Floor in Kitchen, Bathroom, Bedroom and Living Area
Auto Motion Power Shades and Lambrequins
Auto Motion Power Shades for Windshield and Driver/Passenger Side Windows
Hardwood Raised Panel Interior Passage Doors
Super Polished Solid Surface Window Sills
Flush Handles on Swinging Bath Doors
Maximized Shoe Storage Shelves Recessed into Rear of Wardrobe
Interior Assist Handle at Main Entry Door
Quilted Bedspread with Accent Pillow
Safe Located in Bedroom Wardrobe
Wastebasket in Kitchen Base Under Sink

**CABINETS & FURNITURE**

Sable Maple Hardwood Cabinets with Raised Panel Doors with Matte Finish
Concealed Hinges on Cabinet Doors
Super Polished Solid Surface Countertop in Kitchen with Undermounted Stainless Steel Sink and Sink Covers
Lifts on Bed Top
Passenger Seat Work Station
Super Polished Solid Surface Countertop in Bathroom and Bedroom
Pullout Pantry Shelves
Drawers with Dovetail Sides with Self Closing Full Extension Ball Bearing Guides
Soft-Close Cabinet Doors*
Push-to-release Drawer Slides in Pantry
Unitized Cabinet Construction with Full Overlay Doors
Villa Ultraleather® Sofa and Driver/Passenger Seats with Integrated Seatbelts
Air Cooled Driver/Passenger Seats
Heated Front Seats with Power-Lumbar, Recline, Footrest and Queen Sized Passenger Seat
Cedar Paneling in Bedroom Wardrobe
Extended Rotation Concealed Hinge for Washer/Dryer Cabinet Door
Side Folding Hide-A-Bed Sofa with Memory Foam Mattress*
Sleep Number® R5 Radius Corner Air Mattress
Mesh Cell Phone Holder at Each Bunk Bed*
Full Height Wardrobes Beside Lav*
Chaise Lounge-Off Door Side, Dormi Sofa-Door Side*
Chaise Lounge-Off Door Side, Hide-A-Bed Sofa with Memory Foam Mattress-Door Side*
Molded Silverware Divider Tray

<b>OPTIONS</b>
Carmel Glazed Maple Hardwood Cabinets with Mitered Raised Panel Doors-Ultra High Gloss or Matte Finish
Ginger Glazed Cherry Hardwood Cabinets with Raised Panel Doors- Ultra High Gloss or Matte Finish
Pearl Glazed Maple Cabinets with Raised Panel Doors-Matte Finish
Sable Maple Hardwood Cabinets with Raised Panel Doors-Ultra High Gloss
Power Extenda Flex Dinette
Buffet Dinette
U-Dinette with Power Adjusted Table
Euro Booth Dinette with Two Table Leaves and Two Folding Chairs
Combination Desk/Dinette with Buffet Table, Two Fixed/Two Folding Chairs
Power Extenda Flex Dinette
Power Incline Head of Bed
Power Incline Retracting Bed Base*
Two Recliners with Lampstand and Reading Lights
87" Power Extenda L with Chaise Lounge
87" Side Folding Hide-A-Bed with Two Ottomans and Jackknife Sofa
Chaise Lounge/U-Dinette Ensemble
Chaise Lounge/Euro Booth Dinette Ensemble with Two Table Leaves and Folding Chairs
Massage Feature Added to Driver/Passenger Seats
Overhead Cabinet Above Dinette
Overhead Cabinet in Dinette/Living Room Slideout
Sofa with Memory Foam Mattress/U-Dinette Ensemble
Theater Seating 87" Powered with Reading Lights and Lighted Cup Holders
Fireplace with 50" 4K TV on Televator (Floor Plan Specific)*
Hide-A-Bed, Off Door Side, Jackknife-Door Side

**APPLIANCES & ACCESSORIES**

Stainless Steel 30" GE Profile Advantium® Microwave
Air Horns
Whirlpool® Stainless Steel 19.7 Refrigerator with Water Dispenser
Hardwood Overlay Refrigerator Panels
Whirlpool® Two-Piece Stacked Washer and 220 Volt Dryer
Dometic® 3.0 Cf Freezer on Pull-Out Tray in Exterior Baggage Compartment*
Fireplace in Living Area*
Central Vacuum with Tool Kit
All Electric, Flush Mount Induction Cooktop
<b>OPTIONS</b>
Dishwasher in Drawer with Wood Panel Front



**AUDIO, VIDEO & ACCESSORIES**

Samsung® LED TV and Sony® Blu-ray Disc Player in Living and Bedroom Areas* (TV Sizes Vary Per Floor Plan)
Samsung® 50" 4K LED TV on Televator in Living Area*
Samsung® 43" 4K LED TV in Front Overhead
Bose® 500 Subwoofer
Bose® 700 SoundTouch Soundbar in Living Room
Bose® Solo 5 Bedroom Speaker
Dash Radio with Touchscreen Navigation, Dual Monitors, Harman/JBL 360 Watt Sound System and Subwoofer
Internet Connectivity for Remote Access to Motorhome
Samsung® Tablet with Control of AV Equipment, Lights, Shades, Keyless Entry and SilverLeaf App
Winegard Rayzar Automatic Digital TV Antenna
Satellite Dish Prep on Roof
Sirius® Satellite Radio Capability (Does not include monthly subscription)
TV Jack and 110 Volt Recept in Door Side Exterior Storage Compartment
Cat 6 TV Cables
Infrared Repeater System to Operate Audio/Visual Components
WiFiRanger SkyPro Pack Router
Xite HD 360 Camera System with Predictive Grid Lines and Tri-View Rear Camera
Remote Navigation Programming Via SD Card
10 Bc Fire Extinguisher, Smoke Detector, Propane and Carbon Monoxide Detector
<b>OPTIONS</b>
Exterior Entertainment Center in Sidewall with Samsung® 43" 4K LED TV and Soundbar
Exterior Entertainment Center in Storage Compartment with Samsung® 43" 4K LED TV and Soundbar
WiFiRanger SkyPro LTE Cellular Router
Winegard In Motion Dome Satellite Dish
Winegard Auto Open Face Swm Satellite Dish
Winegard Automatic Open Face Satellite Dish
Winegard Automatic Open Face SWM Satellite Dish
Winegard Cellular In Motion WiFi
Two-19" Skyworth TV/DVD Monitors-One at Each Bunk*
Extra Monitor on Passenger Side
Security System
Universal Toll Module
Rear Camera (2) Prep for Use with Stacker Trailer

\*Check with dealership on floor plan availability.

The content in our literature depicts and describes products that are subject to change. For the most recent images and information, please visit [NewmarCorp.com](http://NewmarCorp.com).

# The Newmar Customer Experience

The Newmar difference goes beyond our industry-leading motor coaches to provide you with an unrivaled ownership experience.



## QUALITY FROM THE START

Every Newmar is crafted one at a time by folks who have spent an average of eight years building them. And each coach we assemble must undergo more than 1,000 tests and checks before ever leaving our factory.



## CAREFULLY SELECTED DEALERS

We view our dealership network in terms of quality, not quantity. Each of our dealers acts as a partner in our shared mission to exceed your highest of expectations, for an ownership experience that's second to none from day one.



## EVERYTHING IN ONE PLACE

As a Newmar owner, you'll find resources specific to your coach through Newgle, an easy-to-use knowledge base that houses everything from user guides to technical support documents.



## FRIENDS FOR LIFE

Meet fellow owners through the Newmar Kountry Klub, a top social club for RV travelers that hosts rallies and other special events throughout the U.S. and Canada.



## SEAMLESS SERVICE

When you join the Newmar family, we pair you with a dedicated service specialist with expert knowledge of your exact coach. Available 24/7, our service specialists guarantee dealer warranty authorizations within four business hours and ship all in-stock parts the same day, free of charge.



## ROCK-SOLID PROTECTION

All models include a one-year/unlimited mileage limited warranty and a five-year, non-transferable structural warranty that covers your coach's superstructure in the event it fails to perform.

**Ask your Newmar dealer for more details.**



## A. ROOF

---

Fiberglass Roof  
 Fiberglass Batten Insulation  
 A/C Ducting  
 16" on Center Aluminum  
 Rafter Framing  
 Kraft Paper Vapor Barrier  
 5/8" Bead Foam  
 3/16" Panel  
 Padded Vinyl Overlay

## B. SIDEWALL

---

Interior Wall Panel  
 5/8" Bead Foam  
 Kraft Paper Vapor Barrier  
 Fiberglass Batten Insulation  
 Composite One-Piece  
 Gelcoat Exterior Sidewall  
 Aluminum Framing

## C. FLOOR

---

Tile  
 5/8" Floor Decking  
 Fiberglass Batten Insulation  
 16" on Center Wood Framing  
 Polyethylene Moisture Barrier

## D. EXTERIOR

---

15M Penguin™ Heat Pump Central  
 Air Conditioners  
 One-Piece Bonded Windshield  
 Polish Free Aluminum Wheels  
 Frameless, Double-Pane,  
 Tinted Safety Glass Windows  
 Side-Hinged Baggage Doors with  
 Optional Pull-Out Tray

# Our Partners

Newmar Quality Begins with the Company We Keep

You deserve class-leading performance from names you can trust. That's why we only work with suppliers dedicated to providing our customers with unrivaled quality, comfort, and support.



Driven By You

## FREIGHTLINER CUSTOM CHASSIS

Freightliner Custom Chassis Corp. (FCCC) is renowned for delivering the industry's best ownership experience through exceptional 24/7 factory-direct support, exceptional ride and handling, and developing high-performance innovations such as DRIVETECH. It's the only RV driving system that prioritizes safety and automotive luxury by putting every command at your fingertips.



## SPARTAN RV CHASSIS

Designs, engineers, and assembles by hand each Spartan chassis for the best ride and handling in the industry. Spartan's leading safety ratings and ongoing investment in R&D give Spartan chassis owners superior performance and higher coach resale values. Spartan is American owned and has earned the trust of discerning RV owners based on its premium products and award-winning customer service.



We create chemistry

## BASF

A world full of colors! The Coatings Division of BASF develops, produces and markets a high-quality range of innovative and sustainable automotive OEM coatings and automotive refinishes.



## INDUSTRIAL FINISHES

Industrial Finishes has supported RV manufacturers for over four decades. The Industrial Finishes paint process delivers uncompromising quality, providing your coach with a true "Masterpiece" finish.



## RIVERPARK

RiverPark proudly represents the leading brands in consumer electronics—brands you know and trust to provide exceptional quality and innovative technology. Newmar features Samsung's incredible 4K TVs with Bose soundbars, Xite Infotainment systems featuring Rand McNally Navigation and JBL and Infinity premium audio. Step into a 2021 Newmar and experience dazzling audio and video performance throughout!



## Our People Take It Personally

Since Newmar was founded in 1968, our goal has been to build a better RV.

We have always believed that traveling shouldn't mean leaving behind the comforts you enjoy, so our coaches are crafted to be residential-quality homes—complete with handmade cabinetry and designer décors.

Every Newmar is built by hand, one at a time, by men and women who have dedicated years to creating superior-quality coaches that surpass their mass-produced competition.

We don't want to simply ask you to trust us when we talk about the Newmar difference. We want to prove it, every single time you hit the road. Because we take pride in the responsibility of designing, engineering, and constructing your motorhome.

And we know you'll be proud driving one on the way to your next destination.



605HP  
**2021 COMFORT DRIVE™**  
RESORT

**SUNSHINE**

← PATH — PURSUIT

**CRUISE** NEWMAR

When You Know the Difference.



Newmar Corporation | 355 N Delaware St | PO Box 30 | Nappanee, IN 46550-0030 | 574-773-7791 | Fax 574-773-2895

[NewmarCorp.com](http://NewmarCorp.com)

2021 FRONT TOUCHSCREEN NAV | COM