

2021 King Aire Luxury Motor Coach



NEWMAR

NEWMAR

# Luxury Elevated

In the 2021 King Aire, we've taken our most luxurious coach and raised the bar of comfort even higher. Inside, you'll find features and amenities completely unique to the King Aire—they're not available on any other Newmar coach. Newmar has always stood for luxury, and the King Aire exemplifies our dedication to it. With hundreds of changes and upgrades, the new King Aire is designed for the most discriminating of tastes.





## The Elite Life 2021 King Aire

An unrivaled coach begins with an unparalleled driving experience. The King Aire features standard features like a Mobileye® lane departure warning system, OnGuard™ collision mitigation technology, adaptive cruise control, and automatic high-beam headlights. And every King Aire is built on a Spartan® K3 chassis—with a new passive steer tag axle for shorter turn radius. A new feature of the chassis is an electronic proportional tag with a trailer tow mode that transfers weight with two predefined settings. The 2021 King Aire is available in three floor plans, each full of opulence and additional features.

*Velluto full-paint Masterpiece™ finish*

# Top-Tier Travel

The experience inside the King Aire has been elevated from the cockpit to the rear bedroom. Starting with two heated and cooled full-leather captain's chairs with a standard massage feature, the dash has also been redesigned completely and is also covered in leather. The standard navigation system displays on the driver's side screen, as well as on the passenger side monitor. A Harman Infinity® audio system will delight your inner audiophile with crystal clear sound. A Samsung® touch screen tablet allows you to adjust lights and shades, and control electronics with a simple swipe. Of course, Internet connectivity solutions come standard, as do wireless charging pads.



*Floor plan 4531 with Velluto décor  
and Stratus Rift Oak cabinetry*



## Exclusive Style

The living room is designed for the lap of luxury. Two large bonded windows give an uninterrupted view of the scenery. Furniture is made from the finest Italian full grain leather, including floor plan-specific options for a Power Comfort Lounge Sofa and Visionary Trifold Sleeper Sofa. Accent-lit theater seating is also an option, with standard heat and massage. To stay entertained, you'll find a Samsung® 55" 8K LED TV, as well as a QLED model mounted above the cockpit. These are paired with a Bose® 700 soundbar, as well as a Bose 500 series subwoofer to immerse yourself in your favorite shows and movies. Three 15M Penguin™ heat pump central air conditioners keep things cool. Plus, a newly designed floor construction allows for even more interior ceiling height.





## First-Class Cooking

The kitchen in the King Aire is the stuff of chefs' dreams. First, you'll find all new hardwood European-style cabinetry with a diamond gloss finish. They play wonderfully with the quartz countertops. The appliance suite features top-tier residential equipment, like a Viking® stainless steel refrigerator and convection microwave—which is hidden behind a power-operated hardwood cabinet door. A Wolf® induction cooktop, Fisher & Paykel dishwasher, and a Hansgrohe faucet round out the design. A new marble backsplash and accent lighting make the space feel even more luxurious.





## Resort-Style Relaxation

The master bedroom starts with a standard king-size Sleep Number® adjustable mattress and goose down comforter, and the bed base is finished in leather. Entertainment happens here too, with a Samsung® QLED TV across from the foot of the bed, sitting flush with the cabinets. The bedroom window is larger in 2021 to allow for more natural light. And in addition to the large wardrobe and drawers, you can also option a fireplace in the bedroom to make the space even comfier. And for convenience, you'll find a standard matching Bosch front-loading 24" residential-style washer and dryer.

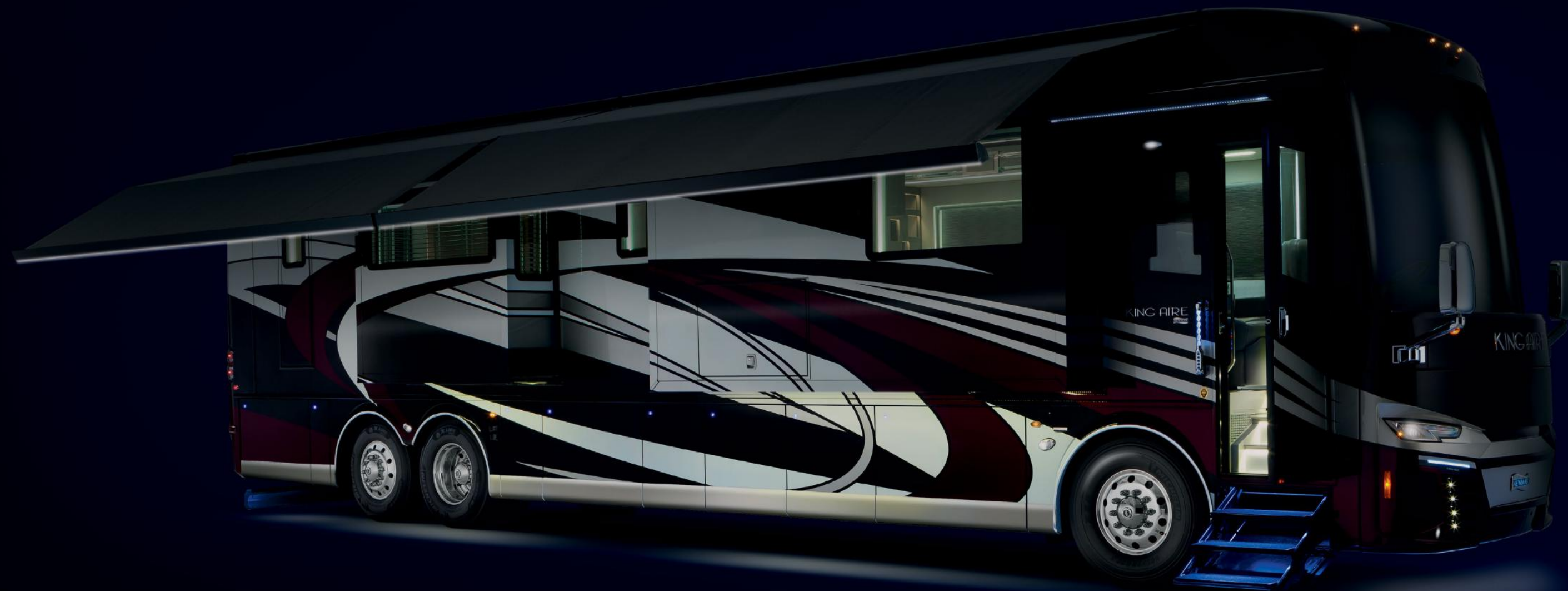


## Spa Day, Every Day

There's no better place to refresh yourself than the master bathroom of the King Aire. In 2021, you'll find a large, refined shower with new tile and fold-down seat, as well as all-new bathroom hardware. Quartz countertops shine beautifully around the large basin sink with dual faucets. A water conservation and filtration system keeps your showers nice and warm. And a mid-ship half bath is ideal for guests and offers many of the same, beautiful appointments as the full bath.







## The Ultimate in Entertainment

Indoors and outdoors both, the King Aire is meant for enjoyment. Dual Girard® Nova side awnings are outfitted with wind sensors and LED lights. The outdoor entertainment center features a Samsung® QLED TV and soundbar. A Dometic® exterior freezer keeps things cool. Push-button baggage door releases with sliding storage trays make getting to your goods a breeze. For security, you'll find a keyless entry and camera monitoring system that's viewable from inside the King Aire or via an app. And most importantly, in addition to a 12.5 kW Onan® diesel generator, everything is powered by two Xantrex lithium ion power packs with two inverters, standard. This innovative system provides higher usable power storage capacity, and can power longer dry-camping opportunities—with 30 kW of power, plus weight savings.

# Traditional Exterior



**ANDAZ EXTERIOR**

*Awning Color: Linen Tweed*



**MESSA EXTERIOR**

*Awning Color: Charcoal Tweed*



**TRITON EXTERIOR**

*Awning Color: Linen Tweed*



**VELLUTO EXTERIOR**

*Awning Color: Charcoal Tweed*

# Contemporary Exterior



## AGRA EXTERIOR

*Awning Color: Charcoal Tweed*



## CORZO EXTERIOR

*Awning Color: Linen Tweed*



## DORIAN EXTERIOR

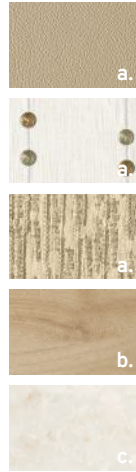
*Awning Color: Charcoal Tweed*



## JAFFA EXTERIOR

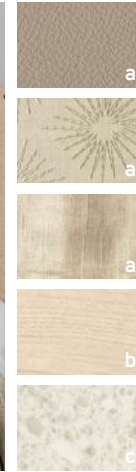
*Awning Color: Linen Tweed*

# Interior Décor



## ANDAZ INTERIOR

a. Furniture/Fabric b. Flooring c. Counter Top



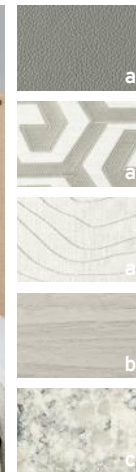
## MESSA INTERIOR

a. Furniture/Fabric b. Flooring c. Counter Top



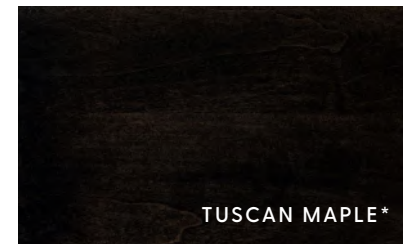
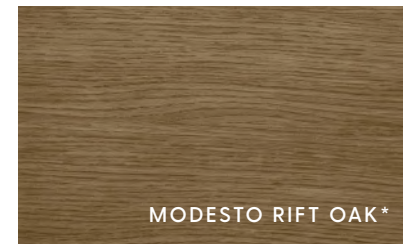
## TRITON INTERIOR

a. Furniture/Fabric b. Flooring c. Counter Top



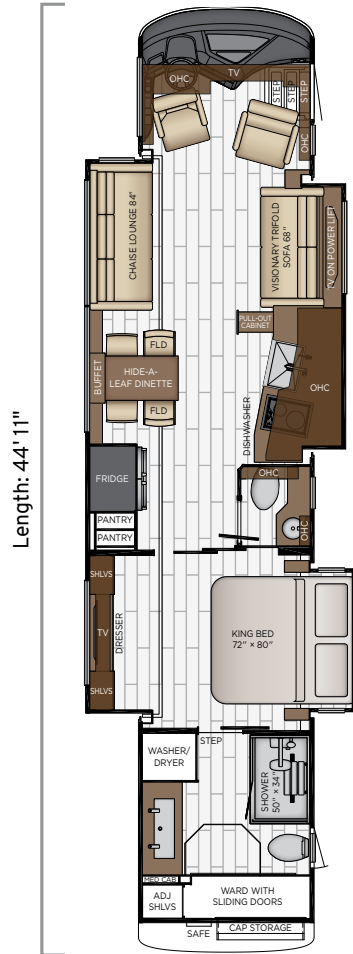
## VELLUTO INTERIOR

a. Furniture/Fabric b. Flooring c. Counter Top



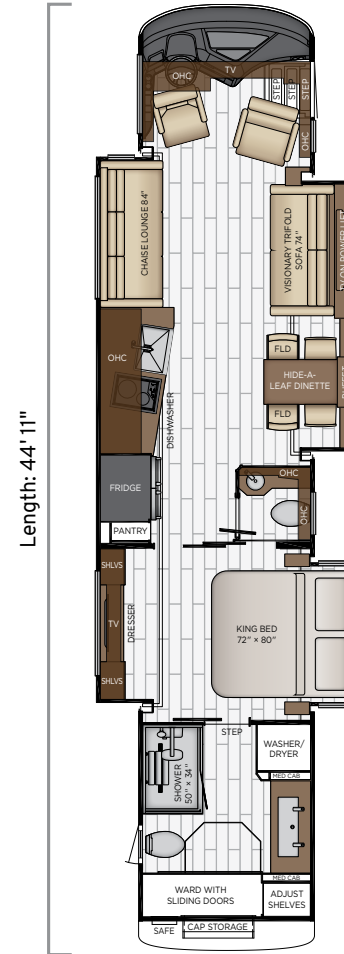
\*Available Hardwood Frame

# Floor Plans



## 4531

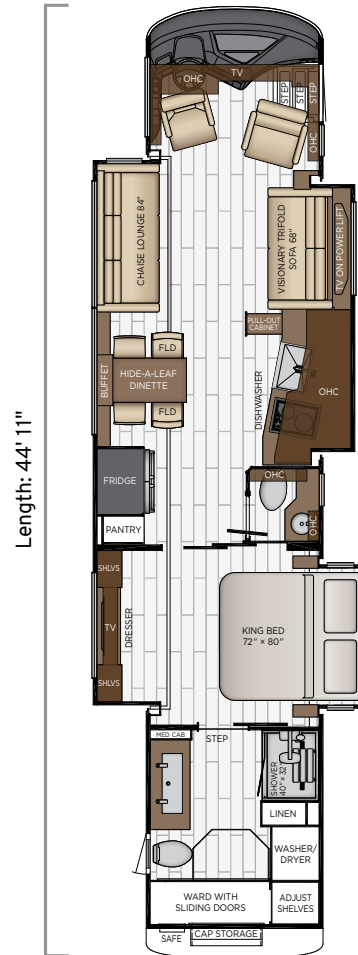
|                     |            |
|---------------------|------------|
| Length              | 44'11"     |
| Width               | 101.5"     |
| App. Overall Height | 13'04"     |
| Interior Width      | 95.5"      |
| Interior Height     | 85.5"      |
| Grey Tank           | 80 gal.    |
| Sewage Tank         | 60 gal.    |
| Water Tank          | 105 gal.   |
| Furnace             | 85,000 btu |



## 4533

|                     |            |
|---------------------|------------|
| Length              | 44'11"     |
| Width               | 101.5"     |
| App. Overall Height | 13'04"     |
| Interior Width      | 95.5"      |
| Interior Height     | 85.5"      |
| Grey Tank           | 80 gal.    |
| Sewage Tank         | 60 gal.    |
| Water Tank          | 105 gal.   |
| Furnace             | 85,000 btu |

# Floor Plans



## 4553

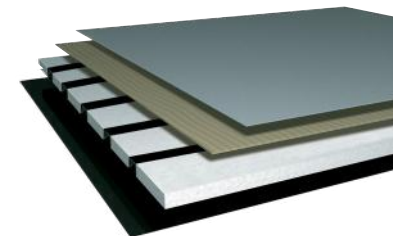
|                     |            |
|---------------------|------------|
| Length              | 44'11"     |
| Width               | 101.5"     |
| App. Overall Height | 13'04"     |
| Interior Width      | 95.5"      |
| Interior Height     | 85.5"      |
| Grey Tank           | 80 gal.    |
| Sewage Tank         | 60 gal.    |
| Water Tank          | 105 gal.   |
| Furnace             | 85,000 btu |



# Quality You Can Feel

Like a fine home, the 2021 King Aire is framed 16 inches on center, and is covered by a fiberglass roof with an integrated gutter rail.

## BASEMENT



Cargo Liner  
 3/8" Floor Decking  
 1 1/4" Bead Foam  
 Galvanized Sheeting (Prevents Distortion)

| FLOOR PLAN | ENGINE HP | AXLE RATIO | FUEL CAP. | WHEEL BASE | FRONT GAWR | REAR GAWR | TAG GAWR  | GVWR      | GCWR      | APP. UVW  | APP. NCC |
|------------|-----------|------------|-----------|------------|------------|-----------|-----------|-----------|-----------|-----------|----------|
| 4531       | 605       | 4.3        | 200 gal.  | 292+TA     | 20000 lb.  | 20000 lb. | 14000 lb. | 54000 lb. | 74000 lb. | 48800 lb. | 5200 lb. |
| 4533       | 605       | 4.3        | 200 gal.  | 292+TA     | 20000 lb.  | 20000 lb. | 14000 lb. | 54000 lb. | 74000 lb. | 48700 lb. | 5300 lb. |
| 4553       | 605       | 4.3        | 200 gal.  | 292+TA     | 20000 lb.  | 20000 lb. | 14000 lb. | 54000 lb. | 74000 lb. | 49200 lb. | 4800 lb. |

The content in our literature depicts and describes products that are subject to change. For the most recent images and information, please visit [NewmarCorp.com](http://NewmarCorp.com).

Lengths, heights, widths, and dry weights are approximate. Weight will vary based on optional equipment added to the above base weight.

**GAWR:** Gross Axle Weight Rating is the maximum permissible weight for an axle.

**GVWR:** Gross Vehicle Weight Rating is the maximum permissible weight for a fully loaded motor coach.

**GCWR:** Gross Combination Weight Rating is the value specified by the manufacturer of the vehicle as the maximum allowable loaded weight of this motor coach and any towed trailer or towed vehicle.

**UVW:** Unloaded Vehicle Weight is the weight of this motor coach as built at the factory with full fuel, engine oil, and coolants. Does not include cargo, fresh water, propane gas, or dealer-installed accessories.

**NCC:** Net Carrying Capacity is the maximum weight of all occupants, including the driver, personal belongings, food, fresh water, waste water, propane gas, tools, tongue weight of towed vehicle, dealer-installed accessories, etc., that can be carried by the motor coach.

**Specifications supplied by the chassis manufacturer.**

**King Aire R-Values:**

Roof R-Value = 24

Sidewall R-Value = 11

Floor R-Value = 48

Basement R-Value = 4



# Features and Options

## EXTERIOR



### EXTERIOR FEATURES

Full-Paint Masterpiece™ Finish with Cut and Buff and Beta Fusion Protection on Front Cap

Convex Exterior Chrome Mirrors with Remote Control, Defrost, Turn Signals, Blind Spot Detection and Side-View Cameras

Entrance Door with Automatic Step

Rear Hitch for Towing Car

Assist Handle at Entrance Door

Dual Latched Front Entrance Door with Power Flush Stepwell Cover

Mud Flaps

Rear Protective Tow Guard with Stainless Steel Newmar Letters Name Cutout

Undercoating

Hydraulic Leveling Jacks

Stainless Steel Exterior Trim Pieces and Entrance Door Kick Panel

Hammock Backer

Holding Tank Levels Displayed in Exterior Water Works Compartment

Powered Door Lift for Engine Access

Two Power Pass-Through Storage Trays with Access from Either Side with One Storage Shelf Per Tray

Ajar Warning for Generator Slide, Baggage Doors, Entry Door, Engine Door and Escape Door

Self-Latching Soft-Close Baggage Doors

Power Washer with 50' Hose Reel Connected to Hot Water Line

Push-Button Baggage Door Release, Keyless Entrance Door with Touch Pad and Doorbell

Blind Spot Detection

### OPTIONS

Patio Hammock Package

Stainless Steel Trim Kit for Exterior Compartment Doors

Flagpole Bracket

### CONSTRUCTION FEATURES

Fiberglass Roof and Integrated Gutter Rail

Gelcoated Fiberglass Exterior Sidewalls, Front and Rear Caps

Aluminum-Frame Sidewalls and Roof Construction, 16" on Center

5/8" Foam Insulation Laminated in Sidewalls and Ceiling

Polar Pak R19 Batten Insulation on Roof

Automatic Mechanical Lock Arms on Non Hydraulic Slideout Rooms-Paddle Style

Egress Door with Ladder System

King Aire Dash



## WINDOWS, AWNINGS & VENTS

Frameless Double-Pane Tinted Safety Glass Windows

Fan-Tastic® Vent with Rain Sensor with Hardwood Louver Cover in Kitchen, Bathroom and Enclosed Stool Room

Girard® Entrance Door Awning with LED Lights, Slideout Covers and Power Window Awnings

Two Girard® Nova Side Awnings with Window Sensor, Remote Control and LED Lights

One-Piece Tinted Windshield

Driver Side Power Window

Window Above Bed

### OPTIONS

Kitchen Windows

## CHASSIS FEATURES

Spartan® K3, Tag Axle, 605Hp Chassis

Air Leveling Control System

Alcoa Dura-Bright Aluminum Wheels

Automatic High Beam Headlights

Electronic Chassis Information Center in Dash

Electronic Stability Control

Cummins Connected Diagnostic System

Cruise Control

Comfort Drive™ Steering with Power Column and Adjustable Control

Recessed Fuel Fills with Crossover to Fill from Either Side

Back-Up Alarm

Anti-lock Braking System

Chassis Battery Disconnect

Automatic Headlights On/Off

Push-Button Engine Start

Glass Dash Instrument Panel

OnGuard™ Collision Mitigation Adaptive Cruise System with Adj. Following Distance Control

Tire Pressure Displayed on Glass Dash

Memory Settings for Driver Pedals, Steering Column and Mirrors

Mobileye® Displayed on Digital Dash via Xite Radio Interface

Mobileye® Speed Limit Sign Recognition on Dash Display

Power Tilt and Telescope VIP Smart Steering Wheel

Auxiliary Air Brake Kit for Towed Vehicles

### OPTIONS

Curt Spectrum Integrated Brake Control

## AIR CONDITIONING & HEATING

Three 15M Penguin™ Heat Pump Central Air Conditioners with Remote Control Thermostat

Hydronic Zone Diesel Heat with Continuous Hot Water

Dash Heater and Air Conditioner

Driver and Passenger Dash Overhead Ventilation System

Roof Air Conditioning Drainage System

Electric Radiant Heat Installed Below Main Floor Tile

## ELECTRICAL FEATURES

12.5 kW Cummins Onan® Diesel Generator with Auto Changeover on Hydraulic Slideout Tray

10 Watt Solar Panel to Charge Chassis Battery

50 Amp Electrical Service with Flexible Cord with Automatic Transfer Switch

Two Lithium Ion Power Packs with Two Inverters in Heated Bay

Battery Disconnect Switch for House Battery

Two 3000 Watt True Sine Inverters

Emergency Engine Start Switch

Engine Block Heater

Exterior Security Lights

Mid-Ship Side Turn Signals

LED Lights Recessed in Ceiling and Underneath Overhead Cabinets

LED Lighting in Pull-Out Pantry, Kitchen and Bathroom Base Cabinets

Accent Lights in Feature Ceiling, Fascia Trim, Lambrequins, Kitchen, Bed Base and Under Dash

Backlight Vanity Mirror

LED Lights in Exterior Storage Compartments on Automatic Switches

Dimmable with Adjustable Aim Reading Lights at Head of Bed

Manually Operated Hold-To-Run Slideout Switch

Automatic Generator Start on Low Battery or Temperature Setting

Cable TV Connection

Interior Courtesy Lights

USB Outlet at Dash for Driver Use

110 Volt/USB Outlet in Each Nightstand

110 Volt Receptacle on Each Side of the Bed Base

KIB Touch Screen Interior Light and Shade Controls

Power Rewind Wheel with 50' Cord\*

Secondary Multiple Touch Screen in Bedroom

SilverLeaf Multiplex Electrical Wiring System

Solar Prep with Six Gauge Wire from Roof to House Battery Compartment



Spare Fuses in Chassis and House Fuse Panels

LED Lights Installed Below Under Door Side Slideouts

Exterior LED Accent Lights Above Rear Tow Guard

Exterior LED Accent Lights Below Perimeter of Unit

LED Docking Lights with Chrome Trim

Rear Hitch Docking Light

Wireless Charging Mat Built into Passenger Console

High Power USB Charger at Dinette and Bedroom Nightstand

Wireless Charging Mat into Dash and Nightstand Tops

110 Volt Electrical Recepts

### OPTIONS

110 Volt Recept in Bed Overhead with Two Pass-Through Ports

Four Flexible 100 Watt Solar Panels on Roof

30 Amp/120 Volt Cord Connection for Stacker Trailer

LED Strip Lighting Installed Under Off Door Side Slideouts

Roof-Mounted Spotlight

## PLUMBING & BATH FEATURES

Demand Water System

Sewage and Grey Holding-Tank Rinse

Dometic® Concerto Electric Flush or Macerator Stool\*

Full Tiled Shower Walls and Floor with Glass Door

Fold-Down Shower Seat

Assist Handle in Each Shower

Exterior Convenience Station

Auto Fill for Fresh Water Tank

Bladder Tank for Water Pump System

Power Water Hose Reel

Aqua Miser® Shower System

ManaBloc Plumbing System

Hansgrohe Kitchen Faucet

UV/Carbon Filter Drinking Water Purifier with Dedicated Kitchen Faucet

Power Dump Valves for Holding Tanks

RV Sanicon Turbo System



**INTERIOR FEATURES**

|                                                                                            |
|--------------------------------------------------------------------------------------------|
| Designer Feature Ceiling and Cathedral Ceiling with Added Height on Rear Bath Floor Plans* |
| Tile Floor in Kitchen, Bathroom, Bedroom and Living Area                                   |
| Auto Motion Power Shades and Lambrequins                                                   |
| Auto Motion Power Shades for Windshield and Driver/Passenger Side Windows                  |
| Flush Handles on Swinging Bath Doors                                                       |
| Maximized Shoe Storage Shelves Recessed into Rear Cap Wardrobe                             |
| Interior Assist Handle at Main Entry Door                                                  |
| Quilted Bedspread with Accent Pillow                                                       |
| Safe Located in Bedroom Wardrobe                                                           |
| Wastebasket in Kitchen Base Under Sink                                                     |
| Leather Window Blind System in Bedroom                                                     |

**CABINETS & FURNITURE**

|                                                                                                   |
|---------------------------------------------------------------------------------------------------|
| Tuscan Maple Hardwood Cabinets with Flat Panel Doors with Diamond Gloss Finish                    |
| Concealed Hinges on Cabinet Doors                                                                 |
| Super Polished Quartz Countertop in Kitchen with Farmhouse Sink                                   |
| Lifts on Bed Top                                                                                  |
| Passenger Seat Workstation                                                                        |
| Super Polished Quartz Countertops in Bathroom and Bedroom                                         |
| Super Polished Quartz Countertop with Trough Sinks in Master Bathroom                             |
| Pull-Out Pantry Shelves*                                                                          |
| Drawers with Dovetail Sides with Self-Closing Full Extension Ball Bearing Guides                  |
| Soft-Close Cabinet Doors with Dual Magnetic Latches                                               |
| European Style Cabinetry                                                                          |
| Front Seats with integrated Seat Belts and Leather Sofa                                           |
| Heated and Cooled Front Seats with Power-Lumbar, Recline, Footrest and Queen-Sized Passenger Seat |
| Massage Feature Added to Driver/Passenger Seats                                                   |
| Driver Seat with Vibrator for Haptic Feedback                                                     |
| Cedar Paneling in Bedroom Wardrobe                                                                |
| Extended Rotation Concealed Hinge for Washer/Dryer Cabinet Door                                   |
| Sleep Number® R5 Radius Corner Air Mattress                                                       |
| Chaise Lounge-Off Door Side, Visionary Trifold Sofa-Door Side                                     |
| Power Comfort Lounge Sofa*                                                                        |
| Visionary V2 Trifold Sleeper Sofa with Memory Foam Mattress*                                      |
| Molded Silverware Divider Tray                                                                    |

|                                                                                                 |
|-------------------------------------------------------------------------------------------------|
| <b>OPTIONS</b>                                                                                  |
| Mink Rift Oak Hardwood Cabinets with Flat Panel Doors- Diamond Gloss Finish                     |
| Modesto Rift Oak Hardwood Cabinets with Flat Panel Doors- Diamond Gloss Finish                  |
| Stratus Rift Oak Hardwood Cabinets with Flat Panel Doors- Diamond Gloss Finish                  |
| 44" Extenda Powered Booth Dinette                                                               |
| Buffet Dinette                                                                                  |
| 75" U-Dinette with Power Adjusted Table                                                         |
| 42" Euro Booth Dinette with Two Folding Chairs                                                  |
| Combination Desk/Dinette with Buffet Table, Two Fixed/Two Folding Chairs                        |
| Overhead Cabinet Above Dinette                                                                  |
| Overhead Cabinet At Head of Bed                                                                 |
| Overhead Cabinet in Dinette/Living Room Slideout                                                |
| 74" Visionary Trifold Sofa with Memory Foam Mattress, Off Door Side, 74" Powered Comfort Lounge |
| 74" Powered Theater Seating with Reading Lights and Lighted Cup Holders                         |
| 84" Powered Theater Seating with Reading Lights and Lighted Cup Holders                         |
| 84" Visionary Trifold Sofa with Memory Foam Mattress, Off Door side 68" Power Comfort Lounge    |
| 84" Visionary Trifold Sofa with Memory Foam Mattress, Off Door side 74" Power Comfort Lounge    |
| 84" Visionary Trifold Sofa with Memory Foam Mattress, Off Door side 84" Power Comfort Lounge    |
| Fireplace in Bedroom                                                                            |
| Fireplace with 55" 8K QLED on Televator                                                         |
| Fireplace with 55" 8K QLED TV Door Side, 74" Visionary Trifold Sofa with Memory Foam Mattress   |
| Fireplace with 55" 8K QLED TV Door Side, 84" Visionary Trifold Sofa with Memory Foam Mattress   |
| Two Recliners, Lampstand, Reading Lights*                                                       |

**APPLIANCES & ACCESSORIES**

|                                                                                         |
|-----------------------------------------------------------------------------------------|
| Stainless Steel 30" Viking® Convection Microwave                                        |
| Air Horns                                                                               |
| Viking® Stainless Steel 22 Cf. Refrigerator with 36" French Door and Internal Ice Maker |
| Bosch® Two-Piece Stacked Washer and 220 Volt Dryer                                      |
| Dometic® 2.64 Cf Freezer on Pull-Out Tray in Exterior Compartment                       |
| Fireplace in Living Area on Swing Arm to Access Storage Area Behind*                    |
| Central Vacuum with Tool Kit                                                            |
| All Electric with Wolf® Induction Cooktop                                               |
| Dishwasher with Wood Panel Front                                                        |



**AUDIO, VIDEO & ACCESSORIES**

|                                                                                                             |
|-------------------------------------------------------------------------------------------------------------|
| Samsung® LED 49" 4K QLED TV and Sony® Blu-ray Disc Player in Bedroom                                        |
| Samsung® 55" 8K QLED TV and Sony® Blu-ray Disc Player in Living Area                                        |
| Samsung® 43" 4K QLED TV in Front Overhead                                                                   |
| Exterior Entertainment Center in Storage Compartment with Samsung® 43" 4K QLED TV and Soundbar*             |
| Exterior Entertainment Center in Sidewall, Samsung® 43" 4K QLED TV and Storage Rack in Storage Compartment* |
| Extra Monitor on Passenger Side                                                                             |
| Bose® 700 SoundTouch Soundbar in Living Room                                                                |
| Bose® Solo 5 Bedroom Speaker                                                                                |
| Bose® 500 Subwoofer                                                                                         |
| Dash Radio with Touch Screen Navigation, Dual Monitors, Harman Infinity® Audio Cockpit Sound System         |
| Internet Connectivity for Remote Access to Motorhome                                                        |
| Samsung® Tablet with Control of AV Equipment, Lights, Shades, Keyless Entry and SilverLeaf App              |
| Winegard Rayzar Automatic Digital TV Antenna                                                                |
| Satellite Dish Prep on Roof                                                                                 |
| Sirius® Satellite Radio Capability (Does Not Include Monthly Subscription)                                  |
| Cat 6 TV Cables                                                                                             |
| Infrared Repeater System to Operate Audio/Visual Components                                                 |
| WiFiRanger SkyPro Pack Router                                                                               |
| Xite HD 360 Camera System with Predictive Grid Lines and Tri-View Rear Camera                               |
| Remote Navigation Programming Via SD Card                                                                   |
| 10 Bc Fire Extinguisher, Smoke Detector, Propane and Carbon Monoxide Detector                               |
| Remote Internet Camera Access to Support Live Video Streaming                                               |
| Mobileye® Lane Tracking                                                                                     |
| Doorbell/Camera System at Entrance Door Connected to Remote App                                             |
| <b>OPTIONS</b>                                                                                              |
| WiFiRanger SkyPro LTE Cellular Router                                                                       |
| Winegard In Motion Dome Satellite Dish                                                                      |
| Winegard Automatic Open Face Satellite Dish                                                                 |
| Winegard Automatic Open Face SWM Satellite Dish                                                             |
| Winegard Cellular In Motion WiFi                                                                            |
| Security System                                                                                             |
| Universal Toll Module                                                                                       |
| Rear Camera (2) Prep for Use with Stacker Trailer                                                           |

\*Check with dealership on floor plan availability.

The content in our literature depicts and describes products that are subject to change. For the most recent images and information, please visit NewmarCorp.com.

# The Newmar Customer Experience

The Newmar difference goes beyond our industry-leading motor coaches to provide you with an unrivaled ownership experience.



## QUALITY FROM THE START

Every Newmar is crafted one at a time by folks who have spent an average of eight years building them. And each coach we assemble must undergo more than 1,000 tests and checks before ever leaving our factory.



## CAREFULLY SELECTED DEALERS

We view our dealership network in terms of quality, not quantity. Each of our dealers acts as a partner in our shared mission to exceed your highest of expectations, for an ownership experience that's second to none from day one.



## EVERYTHING IN ONE PLACE

As a Newmar owner, you'll find resources specific to your coach through Newgle, an easy-to-use knowledge base that houses everything from user guides to technical support documents.



## FRIENDS FOR LIFE

Meet fellow owners through the Newmar Kountry Klub, a top social club for RV travelers that hosts rallies and other special events throughout the U.S. and Canada.



## SEAMLESS SERVICE

When you join the Newmar family, we pair you with a dedicated service specialist with expert knowledge of your exact coach. Available 24/7, our service specialists guarantee dealer warranty authorizations within four business hours and ship all in-stock parts the same day, free of charge.



## ROCK-SOLID PROTECTION

All models include a one-year/unlimited mileage limited warranty and a five-year, non-transferable structural warranty that covers your coach's superstructure in the event it fails to perform.

**Ask your Newmar dealer for more details.**



## A. ROOF

---

Fiberglass Roof  
 Fiberglass Batten Insulation  
 A/C Ducting  
 16" on Center Aluminum  
 Rafter Framing  
 Kraft Paper Vapor Barrier  
 5/8" Bead Foam  
 3/16" Panel  
 Padded Vinyl Overlay

## B. SIDEWALL

---

Interior Wall Panel  
 5/8" Bead Foam  
 Kraft Paper Vapor Barrier  
 Fiberglass Batten Insulation  
 Composite One-Piece  
 Gelcoat Exterior Sidewall  
 Aluminum Framing

## C. FLOOR

---

Tile  
 5/8" Floor Decking  
 High Tech 1/4" Radiant Aerospace  
 Technology Insulation with Sound Barrier  
 Polyethylene Moisture Barrier

## D. EXTERIOR

---

15M Penguin™ Heat Pump  
 Central Air Conditioners  
 One-Piece Bonded Windshield  
 Polish Free Aluminum Wheels  
 Frameless, Double-Pane,  
 Tinted Safety Glass Windows  
 Side-Hinged Baggage Doors  
 with Optional Pull-Out Tray

# Our Partners

Newmar Quality Begins with the Company We Keep

You deserve class-leading performance from names you can trust. That's why we only work with suppliers dedicated to providing our customers with unrivaled quality, comfort, and support.



Driven By You

## FREIGHTLINER CUSTOM CHASSIS

Freightliner Custom Chassis Corp. (FCCC) is renowned for delivering the industry's best ownership experience through exceptional 24/7 factory-direct support, exceptional ride and handling, and developing high-performance innovations such as DRIVETECH. It's the only RV driving system that prioritizes safety and automotive luxury by putting every command at your fingertips.



## SPARTAN RV CHASSIS

Designs, engineers, and assembles by hand each Spartan chassis for the best ride and handling in the industry. Spartan's leading safety ratings and ongoing investment in R&D give Spartan chassis owners superior performance and higher coach resale values. Spartan is American owned and has earned the trust of discerning RV owners based on its premium products and award-winning customer service.



We create chemistry

## BASF

A world full of colors! The Coatings Division of BASF develops, produces and markets a high-quality range of innovative and sustainable automotive OEM coatings and automotive refinishes.



## INDUSTRIAL FINISHES

Industrial Finishes has supported RV manufacturers for over four decades. The Industrial Finishes paint process delivers uncompromising quality, providing your coach with a true "Masterpiece" finish.



## RIVERPARK

RiverPark proudly represents the leading brands in consumer electronics—brands you know and trust to provide exceptional quality and innovative technology. Newmar features Samsung's incredible 4K TVs with Bose soundbars, Xite Infotainment systems featuring Rand McNally Navigation and JBL and Infinity premium audio. Step into a 2021 Newmar and experience dazzling audio and video performance throughout!



## Our People Take It Personally

Since Newmar was founded in 1968, our goal has been to build a better RV.

We have always believed that traveling shouldn't mean leaving behind the comforts you enjoy, so our coaches are crafted to be residential-quality homes—complete with handmade cabinetry and designer décors.

Every Newmar is built by hand, one at a time, by men and women who have dedicated years to creating superior-quality coaches that surpass their mass-produced competition.

We don't want to simply ask you to trust us when we talk about the Newmar difference. We want to prove it, every single time you hit the road. Because we take pride in the responsibility of designing, engineering, and constructing your motorhome.

And we know you'll be proud driving one on the way to your next destination.

When You Know the Difference.



Newmar Corporation | 355 N Delaware St | PO Box 30 | Nappanee, IN 46550-0030 | 574-773-7791 | Fax 574-773-2895  
NewmarCorp.com