

CLASS-C

MIDAS

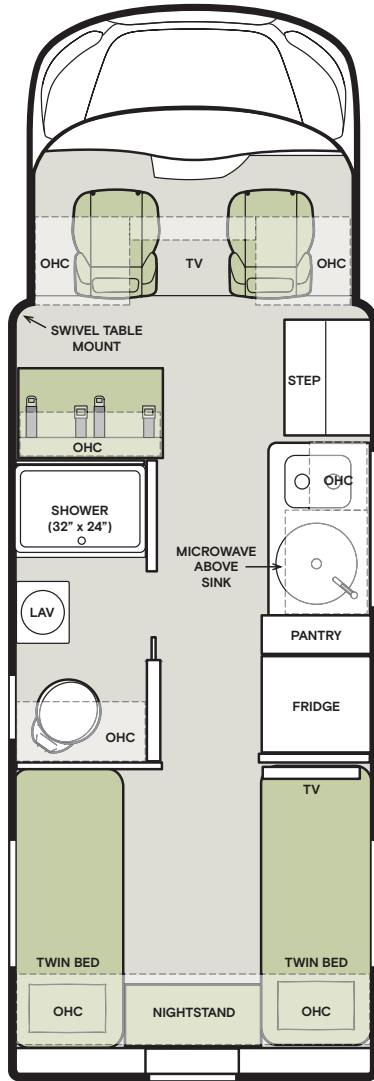


TIFFIN

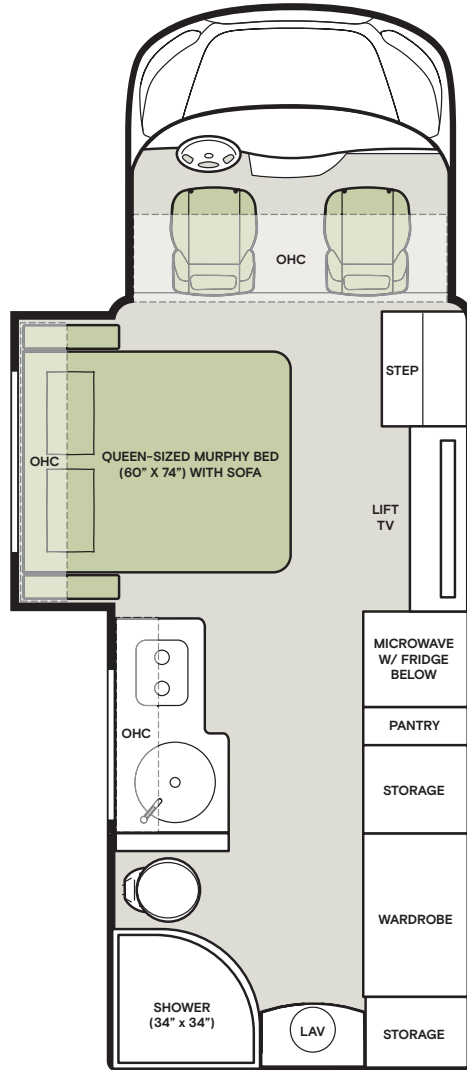
24 MT

Floorplans

24 RT



24 MT NEW



Premium Paint System

Our eight-step, full-body paint system features premium grade paints sealed with three layers of clear coat with ultraviolet protection. An additional layer of high-performance film protects the front of the coach and select areas.

Generation 1 Paint Schemes



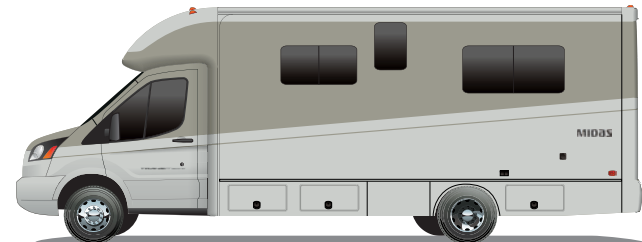
G1 ICEBERG NEW



G1 MIDNIGHT NEW



G1 PALLADIAN NEW



G1 DOVETAIL NEW



The design of every Midas floor plan must meet four essential criteria: Maximum space, Optimal organization, Relaxation plus, and Elegant atmosphere. Tiffin's MORE Plans offer your family the most comfortable layout for life on the road.

If optional furniture combinations are selected, window locations may vary from diagram shown. All options may not be available in every model. Because of progressive improvements and specifications, standard and optional equipment are subject to change without notice or obligation.

For a complete and up-to-date list of available options and specifications, visit tiffinmotorhomes.com.

Images shown are representations of paint layouts only and do not reflect all exterior features or options. Colors shown may slightly differ from colors on actual product.

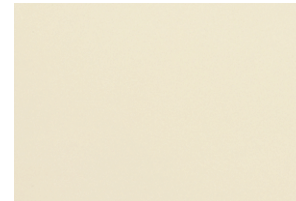
Initial MY2023 Model Change Plans, Subject to Change in Full Production

Interior Décor

Make it all yours. Personalize your décor experience with the Midas' customization options. The Midas' luxury design options allow you to arrive and live in style, wherever your travels and adventures take you.

Colors of interior decor options shown may vary from colors on actual product.

CABINETS



LINEN



SHADOW



SANDSTONE

MINK



BEDROOM



WINDOW TREATMENT



COUNTERTOP



FURNITURE



FLOORING



WALLCOVERING

CHAMPAGNE



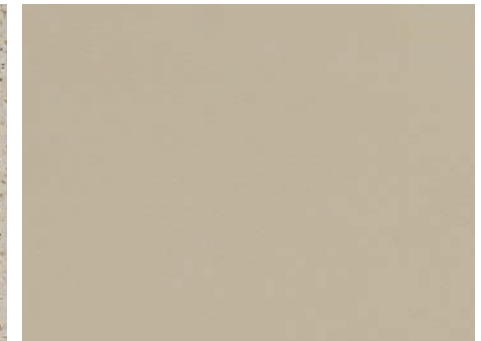
BEDROOM



WINDOW TREATMENT



COUNTERTOP



FURNITURE



FLOORING



WALLCOVERING

Specifications, Features, and Options

KEY : S : Standard Feature | O : Optional Feature; Additional costs may apply | D : Dependent; Availability is dependent on selection of another option | - : Not Available

| WEIGHTS AND MEASURES | 24 RT | 24 MT |
|--------------------------|--------|--------|
| DIMENSIONS | | |
| Overall Length (approx.) | 25' 4" | 25' 4" |
| Overall Width | 90" | 90" |
| Overall Height | 10' 6" | 10' 6" |
| Interior Height | 78" | 78" |
| Interior Width | 87" | 87" |
| Wheel Base | 156" | 156" |
| CAPACITIES | | |
| Fuel Tank (gallons) | 31 | 31 |
| Fresh Water (gallons) | 30 | 38 |
| Grey Water (gallons) | 28 | 23 |
| Black Water (gallons) | 26 | 22 |
| LPG Tank (gallons) | 12.2 | 12.2 |
| WEIGHT LIMITS | | |
| GVWR (pounds) | 11,000 | 11,000 |
| Hitch Rating (pounds) | 2,000 | 2,000 |
| GCWR (pounds) | 13,000 | 13,000 |

CHASSIS AND DRIVETRAIN

- Ford® 350 HD AWD Transit Cutaway Chassis
- All-wheel Drive
- Ford® 3.5-Liter EcoBoost® 310 HP Gas Engine with 400 lb-ft Torque ¹
- 210-Amp Alternator
- Ford® 10-Speed Selectshift® Automatic Transmission with Overdrive
- Aluminum Wheels
- Front and Rear 205/75 R16C Tires
- (1) 12-Volt Flooded Lead-Acid Chassis Batteries
- Front Radiator
- Four Wheel ABS Brakes
- Manual Parking Brake
- Tire Pressure Monitoring
- Post-collision Braking
- Forward Collision Warning
- Lane Keeping System
- Pre-Collision Assist with Automatic Emergency Braking (AEB)
- Adaptive Cruise Control
- Electric Power Assisted Steering (EPAS)

¹ Peak horsepower achieved at 5,000 RPM. Peak torque achieved at 2,500 RPM.

ELECTRICAL

- Liquid Propane (LP) Coach ¹
- Spyder Controls Multiplex System
- 4.0-Kilowatt Onan® Gas Generator
- 2,000-Watt Pure Sine Wave Inverter
- (2) 12-Volt Flooded Lead-Acid House Batteries
- Wall-mounted Thermostat with Built-in Temperature Sensor
- (1) 15,000-BTU Air Conditioner
- (1) 20,000-BTU Ducted Furnace
- SmartPlug® Detachable 30-Amp Shore Power Cord
- Prep for Satellite
- (1) 200-Watt Solar Panel with (1) 30-Amp Controller
- HD Over-the-air Antenna
- Park Cable Hook-up
- 12-Volt Breaker Panel
- 12-Volt Disconnect Switch
- Strategically Placed 110-Volt Outlets
- 110-Volt Exterior Receptacle
- Surge Guard® Transfer Switch
- USB Receptacles Throughout Coach

¹ Propane is used to power the ducted furnaces, the water heater, and the liquid propane cooktop.

PLUMBING

- Truma AquaGo™ Comfort Plus Instant Water Heater
- Water Heater Bypass System
- Aqua View Showermiser™
- Water Filter
- Water Pump
- Low-point Water Drain Lines
- Black Holding Tank Flush System
- Gravity Water Fill
- Heated Water and Holding Tanks
- Tank Level Monitor System
- Centralized Exterior Sewer Bay with Gravity Black and Grey Evacuation Ports
- Exterior Rinse Hose with Shower Head
- Fresh Water Hookup for City Water and Tank Fill
- Sewer Hose Storage

DRIVER'S COMPARTMENT

- Adjustable Driver and Passenger Seats
- Backlit Instrument Cluster with Message Center
- Center Stack Console with Integrated Shifter
- Rain Sensor for Windshield Wipers
- Automatic High-beam Headlamps
- Automatic LED Headlights
- 3-point Safety Belts
- Driver and Passenger Air Bags
- SOS Post-Crash Alert System™ ¹
- Safety Canopy™ Side-Curtain Airbags
- Colored Multi-Function Touch Screen
- AM/FM Stereo with SYNC® 3, Bluetooth,
- Navigation, and Dual USB Ports
- Smartphone Integration For Apple Carplay® and Android™ Auto
- Color Back-up Camera with Monitor
- Overhead Storage
- A-pillar Assist Handles
- Vinyl Floor Covering

¹ The SOS Post-Crash Alert System™ causes the headlights to flash and the horn to beep once any air bag inside the coach deploys.

EXTERIOR

- Full-body Paint with (3) Layers of Clear Coat
- High Performance Protective Film on Front Cap, Front Cab, and Other Select Areas
- (1) Girard® Side-mounted Powered Patio Awning with Integrated LED Lighting
- Large Rear Access Storage
- Lockable Handles on Compartment Doors
- Motion-sensor Lights in Cargo Bay
- Flush-Style Tinted Windows with Tip-out Feature
- Exterior Patio Light
- Fog Lights
- Heated, Electrically Adjustable Side-view Mirrors
- Electric Single Entrance Step
- Rear Mud Guards

| EXTERIOR OPTIONS | 24 RT | 24 MT |
|---------------------------|-------|-------|
| Large Rear Access Storage | S | - |

INTERIOR

- Handcrafted Cabinetry
- Solid Surface Galley Countertop
- LED Lighting
- Accent Lighting in Lounge, Galley, and Bedroom
- Carbon Monoxide Detector
- LPG Leak Detector
- Smoke Detector
- Fire Extinguisher
- Privacy Shades
- Soft-closing Drawer Slides
- Powered Roof Vents
- Interior Grab Handle at Entry Door

| INTERIOR OPTIONS | 24 RT | 24 MT | |
|-----------------------|-----------------------------|-------|---|
| Treated Fabric Suites | Champagne | O | O |
| | Mink | O | O |
| Ultraleather | Etna Linen ¹ | D | D |
| | Seaport Bamboo ² | D | D |
| Cabinetry Stain | Linen | O | O |
| | Shadow NEW | O | O |
| | Sandstone NEW | O | O |
| Television | (1) Flat-panel Television | - | S |
| | (2) Flat-panel Televisions | S | - |

¹ Must be paired with Champagne Fabric Suite.

² Must be paired with Mink Fabric Suite.

KITCHEN

- Stainless Steel Convection Microwave
- One-Burner Induction Cooktop
- Stainless Steel Single Bowl Sink and Faucet with Built-in Sprayer
- Galley Overhead Cabinets
- Solid Surface Galley Countertop

| KITCHEN OPTIONS | 24 RT | 24 MT | |
|-----------------|---|-------|---|
| Refrigerator | Gas-Electric, 5.5-Cubic Foot Refrigerator | S | - |
| | Gas-Electric, 7.0-Cubic Foot Refrigerator | - | S |
| | 12-Volt, 8.0-Cubic Foot Refrigerator | - | O |

BEDROOM

- Mounted Flat-panel TV
- Overhead Cabinet

| BEDROOM OPTIONS | 24 RT | 24 MT | |
|-------------------|--|-------|---|
| Mattress | (1) 76" x 37" and (1) 76" x 27" Mattress, Combines into King Bed (86" x 76") | S | - |
| | Queen-sized Murphy Bed (60" x 74") with Sofa | - | S |
| Under Bed Storage | | S | - |

BATHROOM

- (1) Bathroom
- Solid Surface Lavatory Top
- Handheld Shower Head
- Shower Skylight
- Towel and Toilet Paper Holders
- Roof Vent Fan
- Base Cabinet

| BATHROOM OPTIONS | 24 RT | 24 MT | |
|---------------------------|--|-------|---|
| Master Bathroom Sink | Porcelain Vessel Sink with Chrome Faucet | S | - |
| | Undermount Porcelain Sink with Chrome Faucet | - | S |
| Shower | 32" x 24" Shower with Built-in Caddy and Retractable Shower Screen | S | - |
| | 34" x 34" Corner Shower with Sliding Glass Door | - | S |
| Overhead Medicine Cabinet | | S | - |



TIFFIN

MOTORHOMES

©2023 Tiffin Motorhomes, Inc. Allegro®, Allegro Breeze®, Allegro RED®, Phaeton®, Allegro Bus®, Zephyr®, Wayfarer®, Roughing It Smoothly®, Open Road®, PowerGlide®, and Cahaba® are registered trademarks of Tiffin Motorhomes, Inc. All rights reserved. For all information concerning the limited warranty provided by Tiffin, please refer to the full written limited warranty set forth on the Tiffin website or held by our authorized dealerships. Please note, some interior furnishings not included. Revised: 02-20-23