

Bambi

2023  BAMBI



 **AIRSTREAM**

About **AIRSTREAM®**

Exacting craftsmanship. Uncompromising attention to detail. Limitless inspiration for adventure.

There is no denying that Airstream is the world's most iconic travel trailer for a reason. Durable, reliable, and built upon over 90 years of innovation, Airstream travel trailers helped write the American travel story. We've crisscrossed the globe, parked at the foot of the Pyramids, explored the National Parks, and camped for the weekend down the road.

Proudly built by hand in Jackson Center, Ohio, USA by hundreds of talented craftspeople, each Airstream travel trailer takes approximately 350 hours to build. Form and function are tightly woven into every thoughtfully-planned inch, and every design is carefully considered. The result is a travel trailer that will last a lifetime – or more.

While we manufacture every Airstream from the wheels up, we like to say that we don't actually build travel trailers. Instead, we build someone's retirement, their well-deserved vacation, or their retreat from a hectic day.

In other words: Airstream builds dreams come true.





About Bambi

All the essentials for fun excursions wrapped in a compact package. That's the new Bambi. A name that's been around affectionately for generations. Perfect for Airstream enthusiasts longing for a taste of life on the road, this lightweight, easy-to-manuever travel trailer is packed with everything needed to make the next getaway unforgettable. From the galley kitchen filled with appliances, to the dinette that transforms into extra sleeping space, Bambi gives owners everything they need – proof that great things really do come in small packages.

1 Bath Essentials

Whether you're getting ready for the day or cleaning up after a hike, Bambi features an efficient, spacious bathroom with everything you need close at hand.

2 Nature, Brought Indoors

Panoramic windows add real nature to the interior of Bambi allowing you to enjoy the world around you.



3 Under-bed Storage

With extra under-bed storage, there's ample room for packing that inevitable additional bag.

4 All-electric Refrigerator

The refrigerator runs off battery power, which helps it get cold quicker and efficiently stay cool throughout your trip.

5 Appliances

A microwave and a stainless steel sink with cutting board cover make cooking not just easy, but enjoyable.

6 Moen® Galley Faucets

Moen faucets bring the residential design and convenience you love at home along for the journey.

7 Air Conditioning

When you're setting up camp somewhere hot, the air conditioning with two-speed fan will keep you cool and can serve as a heat source with built in heat strips.

8 Memory Foam Mattress

The pillow-top memory foam mattress is made to fit perfectly in the bedroom and provide a good night's rest.

9 Dinette

When positioned as a table and seating, the dinette has plenty of room for four people to comfortably eat and socialize. It can be converted to a lounge or sofa as well as a bed for additional seating options.





START SMALL

THE AIRSTREAM BAMBI IS THE ANSWER

With the Airstream Bambi Travel Trailer, dreams of adventure become a reality. It's the best of both worlds: A small, lightweight travel trailer that's easy to tow, with the iconic, curved aluminum design expected from Airstream. Inside Bambi, find innovative design and hand-crafted furnishings that will last a lifetime (or more). Make a statement wherever wanderlust leads.

Best of all: Bambi's entry-level price means making big travel dreams come true without a big investment.

So, why wait? The freedom of the road is calling.

Let Bambi be the answer.

1 Aluminum Blinds and Blackout Curtains

Blinds throughout the travel trailer provide just the right light, while blackout curtains in the front and back provide complete privacy.

2 Performatex®

The durable and comfortable seating fabric resists fading, mildew, mold, and stains.

3 Entertainment

A stereo with Bluetooth connectivity streams music from your devices on the stereo, which plays CDs and AM/FM radio. Whether you're plugged into shore power or boondocking on battery power, you can watch the 22" HD LED TV with a DVD player.

4 USB and 110V Charging

USB ports and 110V outlets are strategically placed around the travel trailer, so you never have to go far to keep your devices charged and ready.

5 Air Conditioner & Furnace

Stay cool when it's hot out and keep toasty when the temperature drops near freezing.

6 Two-burner Cooktop

A tempered glass cover that folds down for more working space.

7 Roll Top Overhead Cabinets

Overhead cabinetry provides a styled space for your travel necessities.





TIME TESTED

In 1961, Airstream founder Wally Byam introduced the original Bambi: A single-axle, 16-foot design that didn't skimp on amenities. Wally named it "Bambi" after a sure-footed, nimble African deer he admired while traveling on the famous Cape Town to Cairo Caravan. Today's Airstream Bambi Travel Trailer would make Wally proud: It's lightweight, easy to tow, and thoughtfully

designed. The galley kitchen has all the appliances expected, arranged according to how you use them. The dinette doubles as a lounge space and transforms easily into extra sleeping space. And, the bathroom provides space to get clean without sacrificing the comforts of home. Small in stature, Bambi is big in features.

1 Rear-view Monitoring
A rear-view camera is mounted to the back of the travel trailer to make reversing and parking so much easier.

2 Pre-wired for Solar
Seamlessly add solar panels and monitor them inside the travel trailer.

3 Zip Dee® Awning with Weathermax® Fabric
Pull out the awning to make a shady space for relaxing right outside the front door, and keep your travel trailer cooler in the sun.

4 Outdoor Storage Locker
Throw your chairs, bags, games, and more in the outdoor accessible storage locker.

5 Exterior Shower
Clean off your gear or take a quick shower before you come inside.

6 Exterior Low Pressure Gas Grill Connection
Our low pressure grill connection is made specifically for ease of use with compatible Airstream Weber® Grill.

7 Single Axle
Bambi has a single axle, built for agility, ease of towing, and versatility.

8 Panoramic Window
A front panoramic window is protected by three rock guard pieces. Each is built to swing away for easy cleaning.





DECOR
Dune



16RB



19CB



20FB



22FB



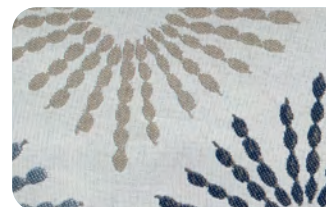
Seating



Bedding



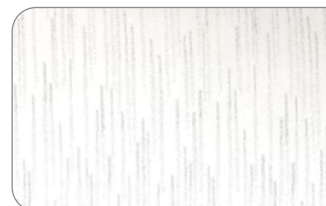
Accent Pillow



Laminates



Dividing Curtain



Flooring





DECOR
Ocean



16RB



19CB



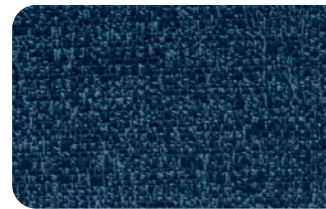
20FB



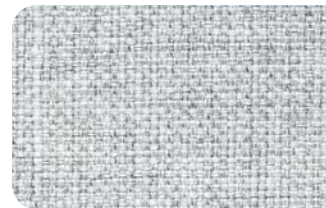
22FB



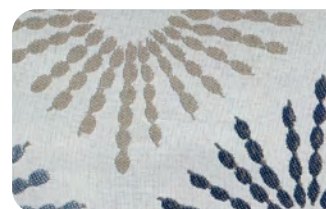
Seating



Bedding



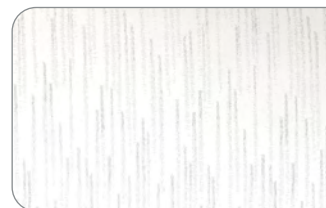
Accent Pillow



Laminates



**Dividing
Curtain**



Flooring



Bambi Specifications

| | 16RB | 19CB | 20FB | 22FB |
|---|-------------|-------------|-------------|-------------|
| Exterior Length | 16' 1" | 19' 1" | 20' 7" | 21' 11" |
| Exterior Width | 8' | 8' | 8' | 8' |
| Interior Width | 7' 7" | 7' 7" | 7' 7" | 7' 7" |
| Exterior Height with A/C | 9' 3" | 9' 3" | 9' 3" | 9' 3" |
| Interior Height with A/C | 6' 4" | 6' 4" | 6' 4" | 6' 4" |
| Hitch Weight (with LP & Batteries) | 430 | 525 | 540 | 500 |
| Unit Base Weight (with LP & Batteries) | 3,000 | 3,650 | 4,000 | 3,900 |
| Maximum Trailer Capacity (GVWR) (lbs.) | 3,500 | 5,000 | 5,000 | 5,000 |
| Net Carrying Capacity (lbs.) | 500 | 1,350 | 1,000 | 1,100 |
| Fresh Water Tank (gal.) | 23 | 27 | 27 | 27 |
| Gray Water Tank (gal.) | - | 28 | 28 | 28 |
| Black Water Tank (gal.) | 28 (Combo) | 18 | 18 | 18 |
| 30 AMP Service Single A/C with Heat Strip (BTU) | 13,500 | 13,500 | 13,500 | 13,500 |
| Ducted Furnace (BTU) | 12,000 | 16,000 | 18,000 | 18,000 |
| Refrigerator (12v Electric) | 3.1 cu. ft. | 4.1 cu. ft. | 4.1 cu. ft. | 4.1 cu. ft. |
| Microwave | STD | STD | STD | STD |
| Convection Microwave Oven | — | — | — | — |
| Interior Windows and Skylights | 7 | 11 | 11 | 9 |
| Master Bed Configurations | 48" x 78" | 48" x 76" | 48" x 78" | 54" x 80" |
| Convertible Dinette, Lounge and Bed | 40" x 91" | 40" x 91" | 40" x 76" | 38" x 75" |
| Sleeping Capacity | Up to 4 | Up to 4 | Up to 4 | Up to 4 |

Bambi Exterior Features

| | |
|---|-------|
| Semi-Monocoque Aluminum Superstructure | STD |
| Fluorocarbon Treated UV Protected Aluminum Exterior | STD |
| Temperature Reducing One Piece White Aluminum Roof | STD |
| Thermal Barrier Protection Between Interior & Exterior | STD |
| Seamless Composite Flooring | STD |
| Handcrafted Welded Extruded Aluminum Window Frames | Front |
| Tempered Tinted Windows with Double Cam Latching System | Front |
| Manual ZipDee® Patio Awning with Weather Max Fabric | STD |
| LP (2 – 20 lb. Steel Tanks) with Auto 2-stage Regulator | STD |

| | |
|---|-----|
| Aluminum LP Cover | STD |
| Multi-Stage Converter with Auto Detect Features | STD |
| Exterior LP Gas Low Pressure Grill Connection | STD |
| Solar Front Window Protection | STD |
| 3M® Film Front Stone Guard Protection | STD |
| Exterior Shower with Hot & Cold Water | STD |
| Lockable Fresh Water Tank Inlet | STD |
| City Water Inlet with Water Pressure Regulator | STD |
| Black Tank Flush System | STD |
| Hand Painted Chassis | STD |

Exterior Features (continued)

| | |
|--|-----|
| Torsion Axle Suspension | STD |
| Manual Hitch Jack | STD |
| 4 Manual Stabilizer Jacks | STD |
| Goodyear® Endurance ST225/75R15 Tires, Balanced | STD |
| Stylized Aluminum Wheels | STD |
| Nev-R-Adjust® Brakes | STD |
| Spare Tire – Full Size | STD |
| Solar Pre-wire (3 Rooftop & 1 Front Access Points) | STD |
| 100w (16', 19') or 200w (20', 22') Solar Package with Interior Monitor | OPT |
| Rear View Monitoring System | STD |
| Cable TV Hookup | STD |
| Dedicated Waste Hose Storage | STD |
| Custom Aluminum Handcrafted | STD |
| 26 in. Wide Entry Door with Window | STD |
| Aluminum Entry Door Handle | STD |
| Unique Front Door Key with Heavy Duty Deadbolt | STD |
| Cast Aluminum Door Hinges | STD |
| Steel Entry Step | STD |
| LED Entrance Light | STD |
| LED Tank Service Light | STD |
| LED Storage Compartment Light | STD |
| Cast Aluminum LED Tail Lights | STD |
| License Plate Bracket with LED Light | STD |
| Enclosed Aluminum Insulated Heated Underbelly | STD |
| LED Storage Compartment Light | STD |
| Cast Aluminum LED Tail Lights | STD |
| License Plate Bracket with LED Light | STD |
| Enclosed Aluminum Insulated Heated Underbelly | STD |

Bambi Interior Features

| | |
|--|-----|
| Complete Aluminum Interior Walls and Ceiling | STD |
| A/C with Heat Strip | STD |
| Fan with Multiple Speeds | STD |
| Probeless Tank Monitoring System | STD |
| EcoBatt™ Insulation | STD |
| Handcrafted and Welded Aluminum Screen Door | STD |
| Panoramic Front Windows with Blackout Shades | STD |
| Handcrafted Italian Lite-Ply Laminated Cabinetry | STD |
| Seamless Vinyl Flooring | STD |
| LED Interior Lighting | STD |
| Overhead Storage with Tambour Doors | STD |
| Tankless On Demand LP Water Heater | STD |
| Coat & Key Hooks | STD |
| Airstream Connected Pre-wire | STD |

Galley, Dinette and Lounge Features

| | |
|--|-----|
| 2 Burner Cooktop (LP Gas) | STD |
| Laminate Galley Top | STD |
| Stainless Steel Sink | STD |
| Laminate Dinette Top | STD |
| Performatex® Stain Resistant Dinette Cushions | STD |
| Dinette Converts to a Lounge and Sleeping Accommodations | STD |
| Flatware Organizer | STD |
| Stereo with Bluetooth® Connectivity | STD |
| 12v/110v LED HD TV with DVD and Omni Directional Antenna | STD |
| Aluminum Mini Blinds | STD |
| Moen® Faucet | STD |

Bedroom Features

| | |
|---------------------------------|-----|
| Pillow Top Memory Foam Mattress | STD |
| Quilted Bedspread | STD |
| Decorative Throw Pillows | STD |
| Sleeping Pillows | STD |
| Reading LED Lights | STD |
| Under Bed Storage | STD |
| Wardrobe with Hanging Bar | STD |
| LED HD TV (Shared with Lounge) | STD |
| Blackout Curtain(s) | STD |

Bathroom Features

| | |
|---|-----|
| Removable Hand Held Shower Head with Shut Off | STD |
| Toilet | STD |
| Lavy Sink** | STD |
| Roof Vent/Fan | STD |
| Towel Bar/Ring | STD |
| Retractable Clothes Line in Shower | STD |
| Bathroom Faucet** | STD |

Additional Features

| | |
|---|-----|
| Airstream Logo Entrance Mat | STD |
| Fire Extinguisher | STD |
| LP, Smoke & Carbon Monoxide Detectors | STD |
| Built In Winterization Kit | STD |
| TRA Certified Green: Emerald Status (Highest Rating) | STD |
| Internally Routed A/C Condensation Drain Line to Wheel Well | STD |
| 3 Year Airstream Limited Warranty (Transferable) | STD |
| 3 Year 24/7 Coach-Net® Roadside Assistance | STD |

** N/A on 16RB



AIRSTREAM®

1001 West Pike
Street, P.O. Box 629
Jackson Center, OH
45334 USA
937-596-6111

www.airstream.com



Product information, specifications, and photography in this brochure were as accurate as possible at time of printing. Photographs may contain some features that are optional on your vehicle.

Since we continually strive to improve our products, actual products may differ. Prices and specifications are subject to change without notice. All capacities are approximate and dimensions are nominal. Some features or options may be different or unavailable in other countries.

Warning – This information is intended as a guide only. Weights of individual vehicles may vary. Consult your owner's manual for complete loading, weighing, and towing instructions. Do not overload the travel trailer.

AIRSTREAM®, the Airstream travel trailer trade dress, and all related model names, slogans, logos, trade dress, and trademarks are owned or used under license by Airstream, Inc. All other trademarks are owned by their respective owners.

All content and images
© Airstream 2022

MKT-00070
8/21 D