

NEWMAR

20  
23

SUPER CLASS C MOTOR COACH

# SUPREME AIRE

S



## SUPREME LEADER OF THE SUPER C CLASS.

The Supreme Aire is our luxurious entry into the Super C class, and it made a splash when it was introduced— thanks in part to a handful of innovative features we brought to the market. Since then, it's only gotten better, and this year is no exception.

## Freightliner® M2 112 Chassis

Detroit Diesel DD13 12.8L Engine // 505 HP // 1850 lb./ft. torque  
Linley Full-Paint Masterpiece Finish™ Exterior



40'–45' // 6 floor plans





# CAB

**Air Ride Captain's Chairs**  
 Lumbar Support with 12V Electric Controls

**Skylight**  
 Power Shade

**Xite Dash Radio**  
 9" Monitor  
 Nav-N-Go Navigation  
 Apple CarPlay  
 HD360 Camera System  
 Triview Rear View Camera





# CABIN

**4 Décor Options:  
Haven\*, Lindley\*, Avalon, and Beckford**

**Villa Hide-a-Bed Sofa**

**Two 15M Penguin™ Heat Pump Air Conditioners  
on 40' Models**

Three 15M Penguin™ Heat Pump Air Conditioners on 45' Models

**Electric Radiant Heat Beneath Main Floor Tile**

**Mobile App to Control Elements of the Coach**

**Power Stepwell Cover**

\*New for 2023



*Floor plan 4065 with Linley décor  
and Glacier cabinets*



# CABIN

## Jackknife Sofa

Additional Furniture Configurations Available

## Samsung® 50" 4K LED TV

Bose® 900 Sound Touch Soundbar

Bose® 500 Subwoofer

## WiFi Ranger Denali System with Spruce Router





## GALLEY

**All Electric Flush Mount Induction Cooktop**

**Convection Microwave**

**Whirlpool® 19.7 cu. ft. Refrigerator**

**Dishwasher in a Drawer** (Optional)

**Glazed Maple Hardwood Cabinets**

Available in Four Matte or High Gloss Finish Color Options

Soft-Close Drawers

LED Lights Under Overhead Cabinets

**Pantry**

Pull-Out Shelves

Push-to-Release Drawer Slides

**Super Polished Solid-Surface Countertops**

**Hand-Laid Tile Backsplash**





# DINETTE

**Hide-a-Leaf Dinette**

**Euro Booth Dinette\***

**Convertible Dinette\***

Can Face Patio or Fore/Aft

\*Optional. Additional dinette configurations available.





# MASTER BEDROOM

## King Bed with Pillow Top Mattress

Sleep Number® Adjustable Mattress (Optional)

## Samsung® 4K LED TV

## Lighted Wardrobe

Shoe Storage  
Safe (Optional)





# BATHROOM

## Large Shower\*

Tile Shower with Glass Door

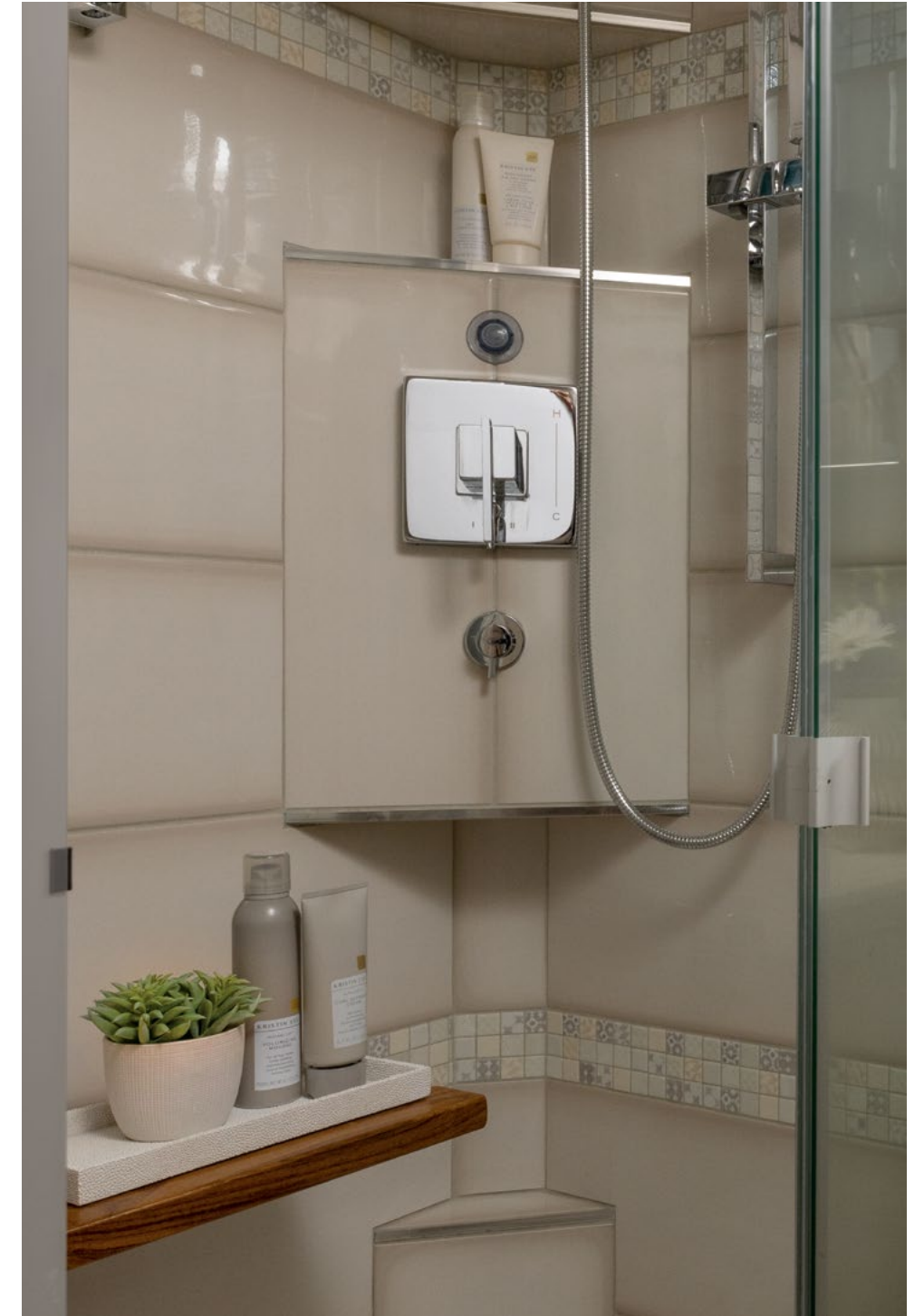
## Super Polished Solid-Surface Countertops

## Aqua Miser® Shower System

## 150 Gallon Fresh Water Tank

## Linen Cabinet

\*Shower sizes vary by floor plan





# EXTERIOR

**Industry-Exclusive Full Paint Masterpiece Finish™  
with Cut and Buff**

**New Graphic Design and Color Options**

**Basement Storage with Easy-Close Doors**

**Power Baggage Door Locks**

**Lighted Exterior Storage Compartments**

**Lithium Ion Battery System** (Optional)

Two Lithionics 320 AHR Battery Packs

**Surge Guard Transfer Switch**

**Dometic® Freezer on Pullout Tray** (Optional)

**Exterior Entertainment Center** (Optional)

Samsung® 43" LED TV

Bose® Soundbar





# EXTERIOR

Rear Cap Storage

Exterior Shower

12.5 kW Cummins Onan® Diesel Generator

25w Solar Panel (to charge chassis battery)







INTERIOR/EXTERIOR  
DESIGN OPTIONS



# Avalon



Awning Color: Charcoal Tweed

## AVALON INTERIOR a. Furniture/Fabric b. Flooring c. Counter Top



## CABINET FINISHES



\*Exterior colors and interior décor options can be matched to customer preference.

\*Available in High Gloss or Matte Finish.





# Beckford



Awning Color: Charcoal Tweed

## BECKFORD INTERIOR a. Furniture/Fabric b. Flooring c. Counter Top



## CABINET FINISHES



\*Exterior colors and interior décor options can be matched to customer preference.

\*Available in High Gloss or Matte Finish.



# Haven



Awning Color: Charcoal Tweed

## HAVEN INTERIOR a. Furniture/Fabric b. Flooring c. Counter Top



## CABINET FINISHES



\*Exterior colors and interior décor options can be matched to customer preference.

\*Available in High Gloss or Matte Finish.





# Linley



Awning Color: Linen Tweed

## LINLEY INTERIOR a. Furniture/Fabric b. Flooring c. Counter Top



## CABINET FINISHES



\*Exterior colors and interior décor options can be matched to customer preference.

\*Available in High Gloss or Matte Finish.





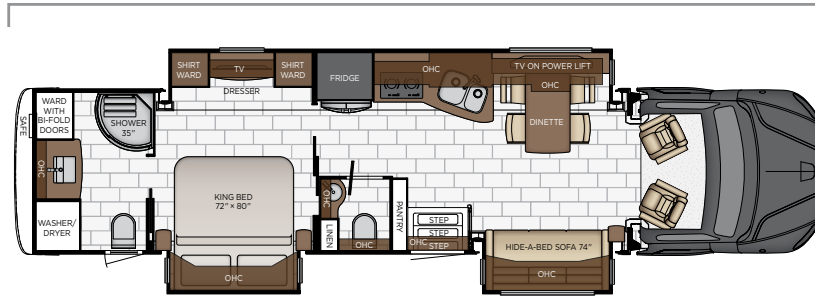




# FLOOR PLANS & SPECIFICATIONS

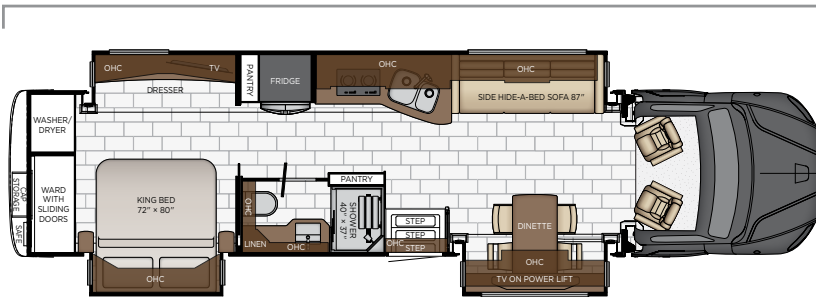


Length: 41' 2"



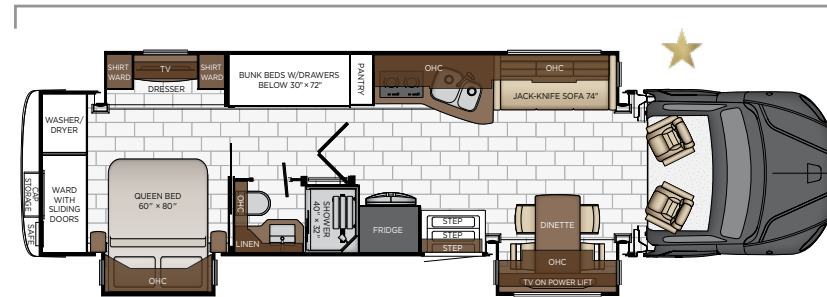
<b>4051</b>	Length	41' 02"	Grey Tank	60 gal.
	Width	101.5"	Sewage Tank	40 gal.
	App. Overall Height	13' 02"	Water Tank	150 gal.
	Interior Width	95.5"	Propane Tank	0 gal.
	Interior Height	83"	Furnace	50,000 btu

Length: 41' 2"



<b>4061</b>	Length	41' 02"	Grey Tank	60 gal.
	Width	101.5"	Sewage Tank	40 gal.
	App. Overall Height	13' 02"	Water Tank	150 gal.
	Interior Width	95.5"	Propane Tank	0 gal.
	Interior Height	83"	Furnace	50,000 btu

Length: 41' 2"



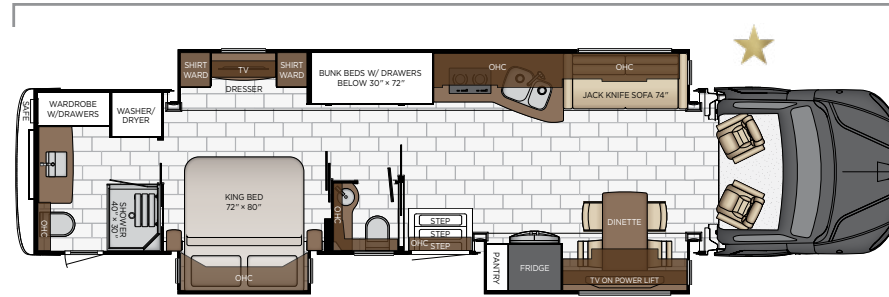
<b>4065</b>	Length	41' 02"	Grey Tank	60 gal.
	Width	101.5"	Sewage Tank	40 gal.
	App. Overall Height	13' 02"	Water Tank	150 gal.
	Interior Width	95.5"	Propane Tank	0 gal.
	Interior Height	83"	Furnace	50,000 btu

★ - new floor plan





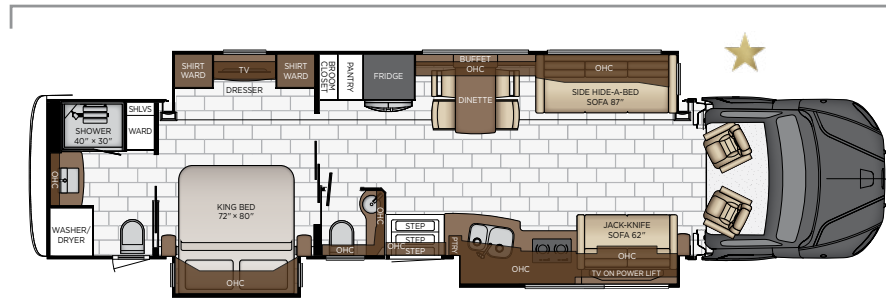
Length: 44' 11"



**4509**

Length	44' 11"	Grey Tank	60 gal.
Width	101.5"	Sewage Tank	40 gal.
App. Overall Height	13' 02"	Water Tank	150 gal.
Interior Width	95.5"	Propane Tank	0 gal.
Interior Height	83"	Furnace	50,000 btu

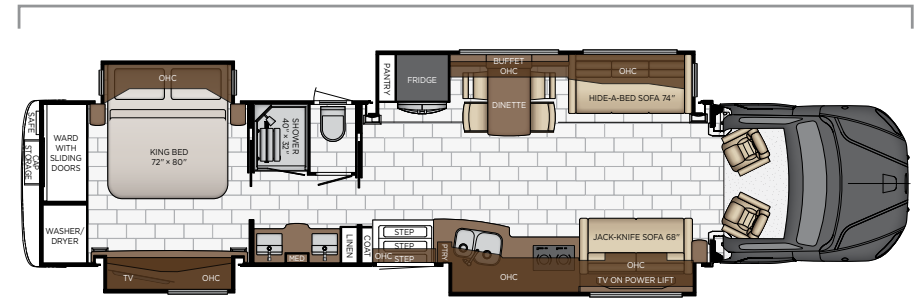
Length: 44' 11"



**4530**

Length	44' 11"	Grey Tank	60 gal.
Width	101.5"	Sewage Tank	40 gal.
App. Overall Height	13' 02"	Water Tank	150 gal.
Interior Width	95.5"	Propane Tank	0 gal.
Interior Height	83"	Furnace	50,000 btu

Length: 44' 11"



**4575**

Length	44' 11"	Grey Tank	60 gal.
Width	101.5"	Sewage Tank	40 gal.
App. Overall Height	13' 02"	Water Tank	150 gal.
Interior Width	95.5"	Propane Tank	0 gal.
Interior Height	83"	Furnace	50,000 btu

★ - new floor plan



## QUALITY YOU CAN FEEL

Like a fine home, the 2023 Supreme Aire is framed 16 inches on center, and is covered by a fiberglass roof with an integrated gutter rail.

FREIGHTLINER®											
FLOOR PLAN	ENGINE HP	AXLE RATIO	FUEL CAP.	WHEEL BASE	FRONT GAWR	REAR GAWR	TAG GAWR	GVWR	GCWR	APP. UVW	APP. NCC
4051	505	3.91	100 gal.	285 + TAG	18000 lb.	20000 lb.	20000 lb.	58000 lb.	72000 lb.	41500 lb.	16500 lb.
4061	505	3.91	100 gal.	285 + TAG	18000 lb.	20000 lb.	20000 lb.	58000 lb.	72000 lb.	42500 lb.	15500 lb.
4065	505	3.91	100 gal.	285 + TAG	18000 lb.	20000 lb.	20000 lb.	58000 lb.	72000 lb.	42500 lb.	15500 lb.
4509	505	3.91	100 gal.	309 + TAG	18000 lb.	20000 lb.	20000 lb.	58000 lb.	72000 lb.	43500 lb.	14500 lb.
4530	505	3.91	100 gal.	309 + TAG	18000 lb.	20000 lb.	20000 lb.	58000 lb.	72000 lb.	43560 lb.	14500 lb.
4575	505	3.91	100 gal.	309 + TAG	18000 lb.	20000 lb.	20000 lb.	58000 lb.	72000 lb.	43300 lb.	14700 lb.

The content in our literature depicts and describes products that are subject to change. For the most recent images and information, please visit [NewmarCorp.com](http://NewmarCorp.com).

Lengths, heights, widths, and dry weights are approximate. Weight will vary based on optional equipment added to the above base weight.

**GAWR:** Gross Axle Weight Rating is the maximum permissible weight for an axle.

**GVWR:** Gross Vehicle Weight Rating is the maximum permissible weight for a fully loaded motor coach.

**GCWR:** Gross Combination Weight Rating is the value specified by the manufacturer of the vehicle as the maximum allowable loaded weight of this motor coach and any towed trailer or towed vehicle.

**UVW:** Unloaded Vehicle Weight is the weight of this motor coach as built at the factory with full fuel, engine oil, and coolants. Does not include cargo, fresh water, propane gas, or dealer-installed accessories.

**NCC:** Net Carrying Capacity is the maximum weight of all occupants, including the driver, personal belongings, food, fresh water, waste water, propane gas, tools, tongue weight of towed vehicle, dealer-installed accessories, etc., that can be carried by the motor coach.

**Specifications supplied by the chassis manufacturer.**

**Supreme Aire R-Values:**

Roof R-Value = 19

Sidewall R-Value = 11

Floor R-Value = 16

Basement R-Value = 4







# FEATURES & OPTIONS



## EXTERIOR FEATURES

Full-Paint Masterpiece Finish™ Graphics with Cut and Buff and Beta Fusion Protection on Front Cap

Lighted Newmar Badge in Front Cap

Chrome Power Baggage Door Locks, Keyless Entry Door with Touch Pad and Door Bell

Convex Exterior Mirrors with Defrost and Remote Control

Automatic Triple Entrance Door Step-Hydraulic

Assist Handle at Entrance Door

Mud Flaps

Rear Protective Tow Guard with Stainless Steel Newmar Name Cutout

Undercoating

Hydraulic Leveling Jacks

Stainless Steel Exterior Trim Pieces and Entrance Door Kick Panel

Storage Bins in Pegboard Compartment

Power Lock Cockpit Doors

Rear Cap Storage

## OPTIONS

Storage Tray 39" X 56" Non-Power Location-Bay 6

Storage Tray 39" X 56" Non-Power Location-Bay 5

Stainless Steel Trim Kit for Exterior Compartment Doors

Flag Pole Bracket

## CONSTRUCTION FEATURES

Fiberglass Roof and Integrated Gutter Rail

Gelcoated Fiberglass Exterior Sidewalls, Front and Rear Caps

Aluminum-Frame Sidewalls and Roof Construction, 16" on Center

5/8" Foam Insulation Laminated in Sidewalls and Ceiling

Polar Pak R19 Batten Insulation on Roof

Automatic Lock Arms on Non Hydraulic Slideout Rooms-Paddle Style

Egress Door with Ladder System\*

HWH Flat Floor Slideout

## WINDOWS, AWNINGS, & VENTS

Frameless Double-Pane Tinted Safety-Glass Windows

Fan-Tastic® Vent with Rain Sensor in Kitchen, Bathroom and Enclosed Stool Room

Hardwood Louvered Cover on Fan-Tastic® Vent in Kitchen

Sky Window in Cockpit with Power Shade

Girard® Package-Two Nova Side Awnings, Slideout Covers and Power Window Awnings

Driver and Passenger Power Window

## OPTIONS

Kitchen Window

Bunk Windows\*

## CHASSIS FEATURES

100 Gallon Fuel Capacity

30K Rear Hitch for Towing-Includes Draw Bar with 2-5/16" Ball

Aluminum Wheels

Anti-Lock Braking System

Chassis Battery Disconnect

Electronic Stability Control

Cruise Control

Standard M-2 112 Chassis Detroit DD13-505 Engine 311" Wheel Base

Standard M-2 112 Chassis Detroit DD13-505 Engine 335" Wheel Base

Tandem Rear Drive Axles

Tire Pressure Monitoring System

## AIR CONDITIONING & HEATING

Two 15M Penguin™ Heat Pump Air Conditioners with Remote Control Thermostat on 40'

Three 15M Penguin™ Heat Pump Air Conditioners with Remote Control Thermostat on 45'

Chinook Dual Loop Heat with Continuous Hot Water

Dash Heater and Air Conditioner

Wall Mounted Sensors for Heating and Air Conditioning

Roof Air Conditioning Drainage System

Electric Radiant Heat Installed Below Main Floor Tile

## ELECTRICAL FEATURES

12.5 kW Onan® Diesel Generator

Generator Start/Stop Function on Touchscreen in Water Bay Compartment

50 Amp Electrical Service with Flexible Cord with Automatic Transfer Switch

Eight 6-Volt AGM House Batteries

Battery Disconnect Switch for House Battery

25 Watt Solar Panel to Charge Chassis Battery

3000 Watt True Sine Inverter

Integrated Block Heater

Energy Management System

Exterior Security Lights

Mid-Ship Side Turn Signals







LED Lights Recessed in Ceiling and Underneath Overhead Cabinets
Accent Lights in Feature Ceiling, Slideout Fascia Trim and Lambrequins
LED Lighting in Pull-Out Pantry, Kitchen and Bathroom Base Cabinets
LED Lights in Exterior Storage Compartments on Automatic Switches
LED Lights Installed Under Door Side Slideouts
Lights in Wardrobes
Manually Operated Hold-To-Run Slideout Switch
Automatic Generator Start on Low Battery or Temperature Setting
Cable TV Connection
Interior Courtesy Lights
USB Outlet at Dinette and Bedroom Night Stand
USB Outlet at Dash for Driver Use
Power Rewind Wheel with 50' Cord
Recessed Docking Lights
KIB Touch Screen Interior Light and Shade Controls
Secondary Multiple Touch Screen in Bedroom
Silverleaf® Multiplex Electrical Wiring System
Solar Prep with Six Gauge Wire from the Roof House Battery Compartment
Spare Fuses in Chassis and House Fuse Panels
110 Volt Recept in Bed Overhead with Two Pass-Through Ports
110 Volt/USB Outlet at Head of Each Bunk*
Transfer Switch with Surge Protector
Reading Lights at Head of Bed-Dimmable with Adjustable Aim
Multiplex Lighting Control System with LCD Display Touchscreen
System Control App to Control Numerous Features from Personal Device

<b>OPTIONS</b>
LED Strip Lighting Installed Under Off Door Side Slideouts
Four Flexible 110 Watt Solar Panels on Roof
Cord Connection 50 Amp/120/240 Volt for Stacker Trailer
Exterior Security Lights-Two Doorside, Two Off Doorside and One Rear
Lithium Ion 640 AHR Battery System with Two 3000W Pure Sine Inverters

**PLUMBING & BATH FEATURES**

Demand Water System
Sewage Holding-Tank Rinse
Dometic® 321 China Bowl Stool or Macerator Stool*
Aqua Miser® Shower System
Tiled Shower Walls with Glass Door

Fold-Down Shower Seat
Water Filter for Entire Unit
Exterior Shower
Auto Fill for Fresh Water Tank
Power Water Hose Reel
12 Volt Dump Valves
150 Gallon Fresh Water Tank
Grey Holding Tank Rinse
Bladder Tank for Water Pump System

<b>OPTIONS</b>
Assist Handle in Each Shower
RV Sanicon Turbo System
Hot Water Line Run to Front Off-Door Side Storage Bay

**INTERIOR FEATURES**

Tile Floor in Kitchen, Bathroom, Bedroom and Living Areas
Auto Motion Power Shades and Lambrequins
Interior Assist Handle at Main Entry Door
Fitted Non-Quilted Bedspread with Accent Pillows
Safe Located in Bedroom Wardrobe
Wastebasket in Kitchen Base Under Sink
Shoe Storage Shelves Recessed in Rear Cap of Wardrobe*
Flush Handles on Swinging Bath Doors
Hardwood Raised Panel Interior Passage Doors
Padded Vinyl Ceiling with Designer Feature Panels
Power Stepwell Cover

**CABINETS & FURNITURE**

Bermuda Glazed Maple Hardwood Cabinets with Raised Panel Doors-Matte Finish
Air Ride Driver and Passenger Seats with 12V Electric Lumbar Controls
Concealed Hinges on Cabinet Doors
Super Polished Solid Surface Countertop in Kitchen with Under Mounted Stainless Steel Sink and Sink Covers
Super Polished Solid Surface Countertop in Bathroom and Bedroom
Cooktop Cover Flush, Matching Countertop Material
Lifts on Bed Top
Pull-Out Pantry Shelves*
Push-to-Release Drawer Slides in Pantry





Pantry with Space for Serving Trays and Bakeware
Soft-Close Side Hinge Cabinet Doors
Drawers with Dove Tail Sides with Self-Closing Full Extension Ball Bearing Guides
Villa Furniture
Plush Pillow Top Mattress
Extended Rotation Concealed Hinge for Washer and Dryer Cabinet Door
Mesh Cell Phone Holder at Each Bunk Bed*
Molded Silverware Divider Tray

<b>OPTIONS</b>
Driftwood Glazed Maple Hardwood Cabinets with Raised Panel Doors-High Gloss or Matte Finish
Bermuda Glazed Maple Hardwood Cabinets with Raised Panel Doors-High Gloss Finish
Glacier Glazed Maple Cabinets with Raised Panel Doors-High Gloss or Matte Finish
Sable Maple Hardwood Cabinets with Raised Panel Doors-High Gloss or Matte Finish
Sleep Number® R5 Radius Corner Air Mattress
Convertible Dinette with Two Fixed and Two Folding Chairs that Face to Window
Combination Desk/Dinette with Buffet Table, Two Fixed and Two Folding Chairs
Euro Booth Dinette with Two Table Leaves and Two Folding Chairs
Euro Booth/Hide-A-Bed Combo 162" with Two Table Leaves and Two Folding Chairs
Two Recliners with Lampstand and Reading Lights
Two Ottomans*
Powered Theater Seating 74" with Reading Lights and Lighted Cup Holders
Powered Theater Seating 87" with Reading Lights and Lighted Cup Holders

**APPLIANCES & ACCESSORIES**

Stainless Steel 30" Convection Microwave
Air Horns
Whirlpool® 19.7 Refrigerator
Splendide® Two-Piece Stacked Washer and Dryer
All Electric Flush Mount Induction Cooktop
Central Vacuum with Tool Kit

<b>OPTIONS</b>
Dishwasher in Drawer with Stainless Steel Front Located Below Cooktop
Freezer on Pull-Out Tray in Exterior Compartment

**AUDIO, VIDEO & ACCESSORIES**

Samsung® LED TV in Living and Bedroom Areas* (TV Sizes Vary Per Floor Plan)
Samsung® 50" 4K LED TV on Televator in Living Area*
Bose® 900 Sound Touch in Living Room
Xite Dash Radio with Apple CarPlay, 9" Single Monitor with Nav-N-Go Navigation
Winegard Rayzar Automatic Digital TV Antenna
Satellite Dish Prep on Roof
Two Bedroom Radio Speakers
TV Jack and 110 Volt Recept in Door Side Exterior Storage Compartment
Cat 6 TV Cables
CB Prep with Antenna
Infrared Repeater System to Operate Audio/Visual Components
WiFi Ranger Denali/Spruce LTE
10 Bc Fire Extinguisher, Smoke, Propane and Carbon Monoxide Detectors
Bose® 500 Subwoofer
Xite Triview Rear View Camera
HD 360 Camera System

<b>OPTIONS</b>
SiriusXM® Radio Capability with Antenna (Does not include monthly subscription)
Exterior Entertainment Center in Sidewall with Samsung® 43" 4K LED TV with Soundbar
Exterior Entertainment Center in Storage Compartment with Samsung® 43" 4K LED TV and Bose® Soundbar
Two-19" Skyworth TV/DVD Monitors at each Bunk*
Rear Camera (2) Prep for Use with Stacker Trailer
Universal Toll Module
WiFi System Everest with Aspen Interior Router
Winegard Automatic Open Face Satellite Dish for DISH HD and Bell HD TV
Winegard Automatic Open Face Satellite Dish for DISH and Winegard In-Motion for DISH Network
Winegard Automatic Open Face SWM Satellite Dish for DIRECTV Std/HD
Winegard In-Motion Dome Satellite Dish for DISH Std/HD, DIRECTV Std and Bell Canada

\*CHECK WITH DEALERSHIP ON FLOOR PLAN AVAILABILITY





### A. ROOF

- Fiberglass Roof
- Batten Insulation
- A/C Ducting
- 16" on Center Aluminum Rafter Framing
- Kraft Paper Vapor Barrier
- 5/8" Bead Foam
- 3/16" Panel
- Padded Vinyl Overlay

### B. SIDEWALL

- Interior Wall Panel
- 5/8" Bead Foam
- Kraft Paper Vapor Barrier
- Batten Insulation
- Composite One-Piece Gelcoat Exterior Sidewall
- Aluminum Framing

### C. FLOOR

- Carpet/Tile
- Carpet Padding
- 5/8" Floor Decking
- Batten Insulation
- 16" on Center Wood Framing
- Polyethylene Moisture Barrier

### D. EXTERIOR

- 15M Penguin™ Heat Pump Central Air Conditioner
- One-Piece Bonded Windshield
- Coated Aluminum Wheels
- Frameless, Double-Pane, Tinted Safety Glass Windows
- Side-Hinged Baggage Doors with Optional Pull-Out Tray







# THE NEWMAR CUSTOMER EXPERIENCE

The Newmar difference goes beyond our industry-leading motor coaches to provide you with an unrivaled ownership experience.



## QUALITY FROM THE START

Every Newmar is crafted one at a time by folks who have spent an average of eight years building them. And each coach we assemble must undergo more than 1,000 tests and checks before ever leaving our factory.



## CAREFULLY SELECTED DEALERS

We view our dealership network in terms of quality, not quantity. Each of our dealers acts as a partner in our shared mission to exceed your highest of expectations, for an ownership experience that's second to none from day one.



## EVERYTHING IN ONE PLACE

As a Newmar owner, you'll find resources specific to your coach through Newgle, an easy-to-use knowledge base that houses everything from user guides to technical support documents.



## FRIENDS FOR LIFE

Meet fellow owners through the Newmar Kountry Klub, a top social club for RV travelers that hosts rallies and other special events throughout the U.S. and Canada.



## SEAMLESS SERVICE

When you join the Newmar family, we pair you with a dedicated service specialist with expert knowledge of your exact coach. Our service specialists guarantee dealer warranty authorizations within four business hours and ship all in-stock parts the same day, free of charge.



## ROCK-SOLID PROTECTION

All models include a one-year/unlimited mileage limited warranty and a five-year, non-transferable structural warranty that covers your coach's superstructure in the event it fails to perform. Ask your Newmar dealer for more details.



# OUR PARTNERS

Newmar Quality Begins with the Company We Keep

You deserve class-leading performance from names you can trust. That's why we only work with suppliers dedicated to providing our customers with unrivaled quality, comfort, and support.

## **BASF**

We create chemistry

The Coatings division of BASF is a global expert in the development and production of innovative and sustainable OEM and refinish coatings that deliver solutions beyond your imagination.



## **INDUSTRIAL FINISHES**

Industrial Finishes has supported RV manufacturers for over four decades. The Industrial Finishes paint process delivers uncompromising quality, providing your coach with a true "Masterpiece" finish.



Driven By You

## **FREIGHTLINER CUSTOM CHASSIS**

Freightliner® Custom Chassis Corp. (FCCC) is renowned for delivering the industry's best ownership experience through exceptional 24/7 factory-direct support, exceptional ride and handling, and developing high-performance innovations such as DRIVETECH. It's the only RV driving system that prioritizes safety and automotive luxury by putting every command at your fingertips.



## **RIVERPARK**

At RiverPark, we proudly represent the leading brands in consumer electronics—brands you know and trust to provide exceptional quality and innovative technology. Newmar features Samsung's incredible 4K TVs, Xite Infotainment systems featuring Nav-N-Go Navigation, Bose® soundbars, and JBL and Infinity premium audio. Step into a 2023 Newmar and experience dazzling audio and video performance throughout the coach.



RV CHASSIS

## **SPARTAN MOTORS**

Spartan® Motors is an American company with over 30 years of experience designing and manufacturing the premier motorhome chassis, which provides superior performance, exceptional safety ratings, and industry-leading technology.





WHEN YOU KNOW THE DIFFERENCE<sup>SM</sup>