

Jayco | 2025 Swift Class B Motorhome



# 2025 SWIFT

PUSH BOUNDARIES

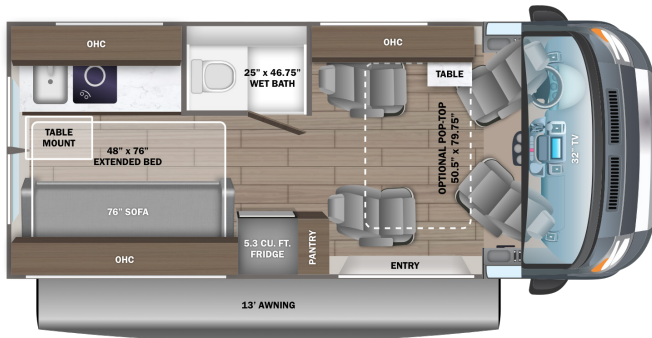
**2**  
YEAR  
LIMITED  
WARRANTY





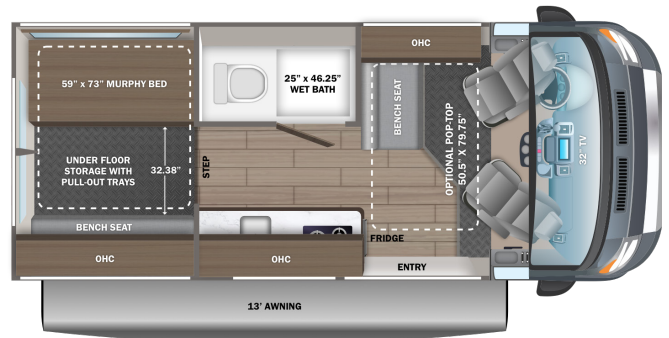


20A

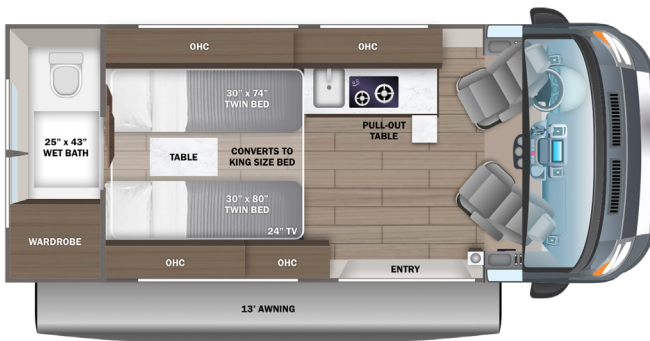


20E

OPTIONS: A, B

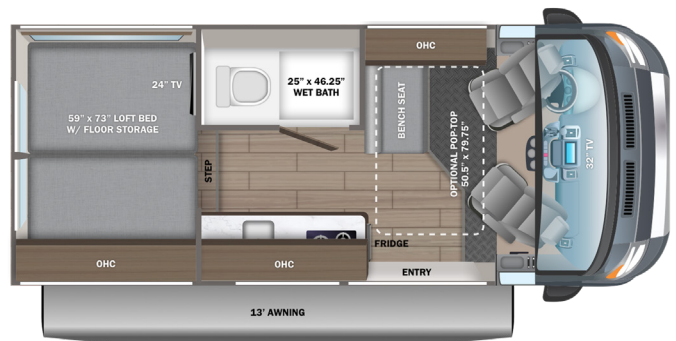


20T



20Y

OPTIONS: A, B



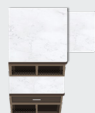
### OPTIONS

A



Rear Seats

B



Work Station

## EXTERIOR SELECTIONS



Silver Van



Granite Van

# STANDARDS & OPTIONS

## CUSTOMER VALUE PACKAGE

JRide®: Hellwig helper springs, premium heavy-duty suspension  
 Thule® patio awning with LED light strip  
 Thule® roof rack (N/A with pop-top option)  
 Truma Combi Eco Plus water heater and furnace  
 Swivel driver and passenger seats with 6-way lumbar adjustment  
 Winegard® Connect 2.0 4G/Wi-Fi/digital TV antenna

## DRIVING

RAM® ProMaster 3500 window van  
 GVWR- 9,350 lb.  
 GCWR- 12,000 lb.  
 3.6L V6 24V VVT 276HP engine with 250 ft.-lb. torque  
 9-speed automatic 948TE transmission  
 LT225/75R 16E tires  
 Aluminum wheels  
 3,500 lb. rear hitch receiver with dual 4/7 pin connector  
 12V chassis battery  
 24 gal. fuel tank (gas)  
 Uconnect® 5 NAV infotainment center with Apple CarPlay® and Android Auto™  
 Power folding/heated side-view mirrors  
 Push-button start  
 ParkView® rear backup camera with dynamic gridlines  
 Blind spot monitoring with rear cross path detection  
 LaneSense® lane departure warning with lane keep assist  
 Forward collision warning with active braking  
 Crosswind assist  
 Electronic stability control  
 Pedestrian/cyclist emergency braking  
 Traffic sign information  
 Drowsy driver detection  
 Rain-sensitive windshield wipers  
 Automatic high-beam headlights  
 Cruise control  
 Driver and passenger airbags  
 Wireless charging pad  
 Power windows and door locks  
 Privacy shades for cab windows  
 Remote keyless entry

## EXTERIOR

LED-lit running boards for cab and entry doors  
 Chrome grille package  
 Cable TV hookup with RG-6 coax  
 Onan® 2,800W generator with auto-gen start  
 200W roof-mounted GoPower® solar panel with integrated control panel  
 1,000W inverter  
 (2) 12V AGM house batteries  
 House battery disconnect switch

30-amp electrical service with detachable power cord  
 (2) 120V exterior outlets  
 6 gal. propane tank (20 lb.)  
 LP quick-connect hookup  
 Heated holding tanks (12V pads)  
 LED-lit holding tank valves  
 Black tank flush  
 Gravity water fill (20T)  
 Winterization drain system  
 12V demand water pump  
 Water filtration system  
 Outside shower

## INTERIOR

Custom-molded ABS interior wall panels  
 Soft-touch vinyl ceiling  
 High-intensity LED ceiling lights  
 Tecnoform® European-style, high-gloss cabinetry  
 Ball-bearing drawer guides  
 Residential vinyl flooring  
 Firefly total coach control system with wall-mounted touchscreen and mobile app  
 120V Coleman®-Mach® 10 13,500 BTU air conditioner  
 Powered roof vent in living area  
 Zip-up screen for entrance door  
 Removable privacy shade for sliding door window  
 Sliding vented windows  
 Decorative window valances with day/night roller shades  
 Zip-up screen for rear doors (20A)  
 Rear magnetic privacy shades  
 Adjustable table with multiple mounts  
 (2) cab bucket seats (20A)  
 32 in. front TV on drop-down bracket (20A, 20E, 20Y)  
 24 in. rear TV on swivel bracket (20T, 20Y)  
 JBL® Flip 6 removable wireless Bluetooth speaker  
 5.3 cu.ft. DC refrigerator (20A)  
 3.1 cu.ft. DC refrigerator (20T)  
 3 cu.ft. DC refrigerator (20E, 20Y)  
 Convection microwave  
 2-burner gas cooktop (1-burner induction with pop-top option)  
 Stainless-steel sink with cover  
 Solid-surface kitchen countertop  
 Pop-up 120V/USB outlet in kitchen  
 (2) twin-size beds with filler cushion converts to king-size bed (20T)  
 Under-bed storage (20T)  
 48 in. x 76 in. convertible sofa bed (20A)  
 59 in. x 73 in. Murphy bed (20E)  
 Under-floor storage with pull-out trays (20E)  
 59 in. x 73 in. loft bed with floor storage (20Y)  
 Bathroom wardrobe with drawers (20T)  
 Shower with magnetic curtain surround

Aqua View® SHOWERMISER™ water management system  
 Toilet with foot flush  
 Medicine cabinet with mirror  
 Powered roof vent in bathroom (N/A with pop-top option)  
 Seatbelts for driver/passenger seats and select cab locations  
 Driver and passenger airbags  
 Smoke alarm  
 Carbon monoxide detector  
 Fire extinguisher

## OPTIONS

50.5 in. x 79.5 in. pop-top (20A, 20E, 20Y)  
 (2) additional cab seats with slide and recline features ILO bench seat (20E, 20Y)  
 Workstation ILO bench seat (20E, 20Y)  
 Li Package  
 - 48V-165 amp hour smart lithium battery providing 7.9KW hours of power IPO 2,800W generator  
 - Auto engine start with high idle  
 - 3,000W inverter IPO 1,000W inverter  
 - 2nd 48V alternator dedicated to lithium battery  
 - Timberline hydronic heating system IPO Truma Combi Eco Plus water heater and furnace  
 - 48V Coleman®-Mach® 10 13.5K BTU air conditioner IPO 120V Coleman®-Mach® 10 13.5K BTU air conditioner  
 - 1-burner induction cooktop IPO 2-burner gas cooktop  
 - No propane - all-electric coach



### HELLWIG® HELPER SPRINGS

Work with the chassis' existing springs to give the RV more support, improving stability under heavy loads

### PREMIUM HEAVY-DUTY SUSPENSION

With a heavy-duty rear stabilizer bar, shocks, and leaf springs, body roll is significantly reduced.

FLOORPLAN	GVWR (lbs.)	GCWR (lbs.)	WHEEL BASE	OVERALL LENGTH	EXTERIOR HEIGHT WITH SATELLITE AND A/C	EXTERIOR WIDTH	INTERIOR HEIGHT	FRESH WATER CAPACITY (gal.)	GRAY WASTE WATER CAPACITY (gal.)	BLACK WASTE WATER CAPACITY (gal.)
20A	9,350	12,000	159"	20' 11"	9' 3"	83"	74"	21	13/14	10
20E	9,350	12,000	159"	20' 11"	9' 3"	83"	74"	21	20	10
20T	9,350	12,000	159"	20' 11"	9' 3"	83"	74"	24	13	12
20Y	9,350	12,000	159"	20' 11"	9' 3"	83"	74"	21	20	10

Meet your Jayco Dealer



Scan QR code for specification definitions

Some specs at the time of print may include estimates. For the most updated information, please visit [Jayco.com](http://Jayco.com)

Jayco, Inc. | P.O. Box 460 | Middlebury, IN 46540

See dealer for further information and prices. All information in this brochure and on [www.jayco.com](http://www.jayco.com) is the latest available at the time of publication approval. Jayco reserves the right to make changes and to discontinue models without notice or obligation. Photography may show optional equipment or props used for decoration purposes only. RVs built for sale in Canada may differ to conform to Canadian codes. JAYCO and the JAYCO BIRD IN FLIGHT are registered trademarks of Jayco, Inc. Printed in USA 10/24 ©2024 Jayco, Inc. 2032950



Jayco - Part of the Jayco Family of Companies