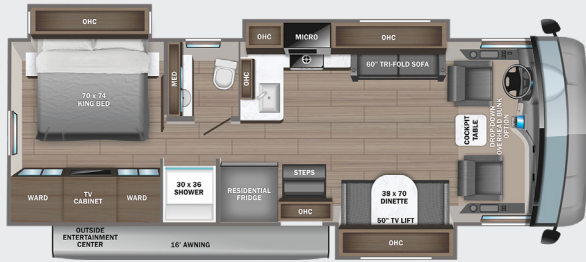


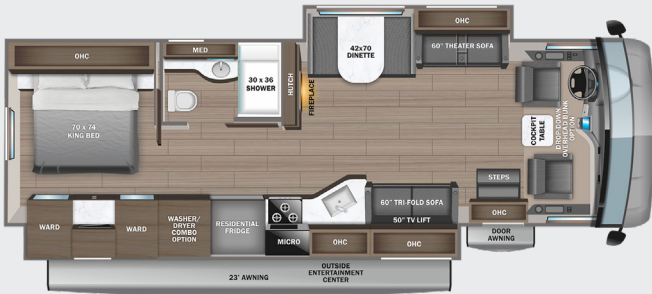
31UL OPTIONS: A, B



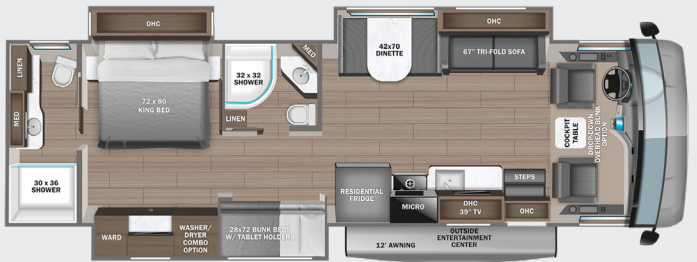
34B OPTIONS: A



34G OPTIONS: A



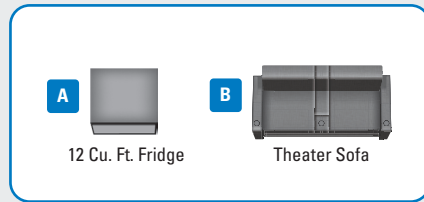
36A OPTIONS: A, B



36C OPTIONS: A



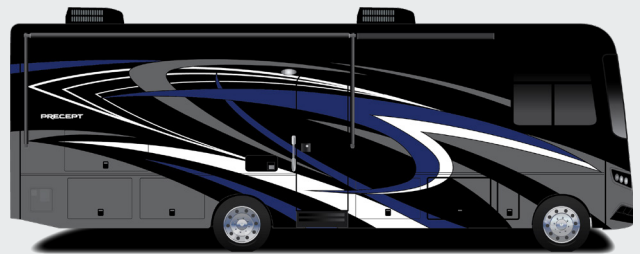
OPTIONS



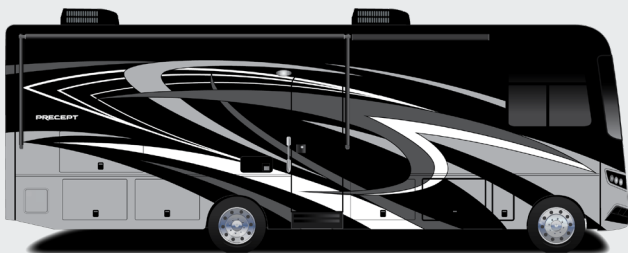
EXTERIOR SELECTIONS



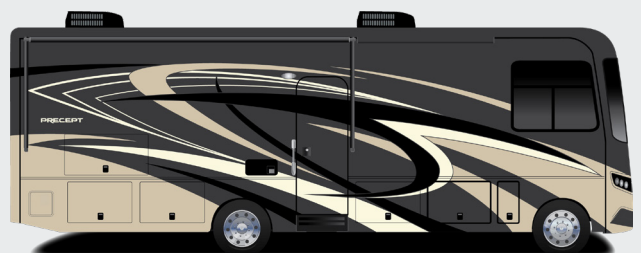
Standard Graphics Package



Alpine Full-Body Paint



Denali Full-Body Paint



Everest Full-Body Paint

STANDARDS & OPTIONS

CUSTOMER VALUE PACKAGE

JRIDE® PLUS: Computer-balanced driveshaft, Bilstein® steering stabilizer, Koni® shocks, variable-rate front and rear jounce bumpers, heavy-duty front and rear stabilizer bars, 22.5 in. Michelin® tires

Automatic hydraulic leveling jacks

Frameless windows

15,000 BTU A/C unit with heat pump and second 13,500 BTU A/C unit

Exterior entertainment center with outside speakers, LED HD Smart TV mounted on swivel bracket and single-disc DVD/FM radio

Electric patio awning with LED lights

Slideout awning(s)

Onan® Marquis Gold Genset 5,500W generator with auto-gen start

1,200W inverter

50 amp electrical service

10 gal. gas/electric water heater

Sony® infotainment center with Apple® CarPlay™ and Android Auto™

Backup and side-view cameras

Removable driver/passenger cockpit table

LED-lit, solid-surface kitchen countertops with recessed stainless steel sink and sink covers

LED HD Smart TV in living area

Day/night roller shades in living area

DRIVING

Ford® F53 chassis

GVWR- 22,000 lb. (31UL, 34B, 34G) 24,000 lb. (36A, 36C)

GCWR- 26,000 lb. (31UL, 34B, 34G), 30,000 lb. (36A, 36C)

7.3L V-8 350 HP engine with 468 ft.-lb. torque

6-speed automatic TorqShift® transmission with overdrive and tow haul mode

210 amp alternator

G-rated highway tires- 235/80R22.5 (31UL, 34B, 34G), 255/80R22.5 (36A, 36C)

Front and rear disc, 4-wheel anti-lock brakes

5,000 lb. rear hitch receiver with dual connector and 7-pin plug

12V chassis battery

80 gal. fuel tank

120 in. panoramic windshield

6-way power and swivel driver/passenger seats

Soft-touch, vinyl-wrapped automotive dash

Tilt steering wheel

A/C and cruise control

Power front privacy shade with manual side privacy shades

EXTERIOR

StrongholdVBL™ roof, floor and sidewalls

Bead-foam insulation (R-24 max roof, R-9 max floor, R-5 max walls)

One-piece, seamless, fiberglass front cap

One-piece, seamless, crowned fiberglass roof

Fiberglass exterior walls with vinyl graphics

Entrance door with industry's largest travel-view window

Electric-powered entrance steps

Lockable, pass-through storage compartments with metal slam latches

Heated holding tanks (12V pads)

16.5 gal. propane tank (56 lb.)

LP quick-connect hookup

Exterior utility center

Winterization drain system

Outside shower

12V demand water pump

Transfer switch with reverse polarity protection

(2) 6V AGM (220Ah) house batteries on slideout tray

190W solar panel with dual controller

Third brake light

INTERIOR

JAYCOMMAND® powered by Firefly

84 in. interior ceiling height with padded vinyl ceiling

High-intensity recessed LED ceiling lights

LED-lit hardwood fascia

Hardwood cabinet doors and drawers

Ball-bearing drawer guides

Jayco-exclusive, easy-operation legless dinette table

2-point lap safety belts in all designated seating locations

30,000 BTU auto-ignition ducted furnace

Electric fireplace (34B, 34G, 36C)

Prep for satellite dish

Cable TV hookup with RG-6 coax and video selector switch

Winegard 2.0 Wi-fi/4G antenna

Residential refrigerator

Furrion® all-in-one cooktop and oven

Residential-size microwave

Decorative kitchen backsplash

Water filtration system

Shower with decorative surround, glass door, skylight and light

Stainless steel bathroom sink

Porcelain toilet with foot flush

Powered roof vent in bathroom with wall switch

Walk-around, king-size bed with bedspread and nightstands

USB port and wireless charging in nightstands

LED HD Smart TV in bedroom

Under-bed storage (select models)

Large wardrobes

Bunks with industry-exclusive 300 lb. capacity each (36A)

Wall-mounted tablet holder in each bunk (36A)

Smoke alarm

Carbon monoxide detector

OPTIONS

Drop-down overhead bunk in cab area with 750 lb. capacity

Combination washer/dryer (34B, 34G, 36A)

Stackable washer/dryer (36C)

Power theater seating (31UL, 36A) (STD 34G, 36C)

12 cu.ft. gas/electric refrigerator



COMPUTER-BALANCED DRIVESHAFT

Ensures smooth and efficient power transfer to the wheels

BILSTEIN STEERING STABILIZER

Reduces driver fatigue by significantly improving steering, handling and comfort

VARIABLE RATE FRONT & REAR JOUNCE BUMPERS

Assist during extreme road occurrences to absorb impact and dampen excess road noise

HEAVY-DUTY FRONT & REAR STABILIZER BAR

A large bar and polyurethane bushings, instead of rubber, transfer power faster for extra support, more stability and easier handling

KONI SHOCK ABSORBERS

Large-diameter tube design pairs gas and hydraulics to resist heat and pressure while independently adjusting to changing road conditions

22.5" MICHELIN® TIRES

Commercial-grade tires built for long hauls and heavy loads

FLOORPLAN	GVWR (lbs.)	GCWR (lbs.)	WHEEL BASE	OVERALL LENGTH	EXTERIOR HEIGHT WITH SATELLITE AND A/C	EXTERIOR WIDTH	INTERIOR HEIGHT	FRESH WATER CAPACITY (gal.)	GRAY WASTE WATER CAPACITY (gal.)	BLACK WASTE WATER CAPACITY (gal.)
31UL	22,000	26,000	228"	33'	12' 10"	101"	84"	72	40	50
34B	22,000	26,000	228"	36' 11"	12' 10"	101"	84"	72	40	40
34G	22,000	26,000	238"	36' 6"	12' 10"	101"	84"	72	40	50
36A	24,000	30,000	252"	38' 10"	12' 10"	101"	84"	72	40/32	40/32
36C	24,000	30,000	252"	38' 10"	12' 10"	101"	84"	72	40/32	40/32

Meet your Jayco Dealer



Scan QR code for specification definitions

Some specs at the time of print may include estimates. For the most updated information, please visit Jayco.com/precept

Jayco, Inc. | P.O. Box 460 | Middlebury, IN 46540

See dealer for further information and prices. All information in this brochure and on www.jayco.com is the latest available at the time of publication approval. Jayco reserves the right to make changes and to discontinue models without notice or obligation. Photography may show optional equipment or props used for decoration purposes only. RVs built for sale in Canada may differ to conform to Canadian codes. JAYCO and the JAYCO BIRD IN FLIGHT are registered trademarks of Jayco, Inc. Printed in USA 8/22 ©2022 Jayco, Inc. 2032581.2023



Jayco - Part of Jayco Family of Companies