

TIFFIN

2024

SUPER-C

# ALLEGRO BAY



## What's New Summary - Allegro Bay

### WHAT'S NEW

---

- New Generation 2 Paint Schemes
- Solstice Interior Décor Package
- Alpaca and Landscape Upholstery Fabrics
- Linen and Platinum Cabinetry
- Overhead Bunk TV Option on 38 AB and 38 BB
- Floor Mat Add-on Option
- Tablet Holders in Bunk Bed Areas
- White Ceiling Panels
- Updated Ceiling Treatments
- Accent Lighting in Driver's Compartment Overhead
- Telescoping Ladder for Overhead Bunk
- Digital Rear View Camera
- Overhead Bedroom Window Now Available on 38 AB and 38 BB
- Mounted TVs Now Standard on All Floor plans
- Extended Booth Dinette-Sleeper Option on 38 BB and 38 CB

## Premium Paint System

Our eight-step, full-body paint system features premium grade paints sealed with three layers of clear coat with ultraviolet protection. An additional layer of high-performance film protects the front of the coach and select areas.



MIDNIGHT



G2 BARCELONA



G2 FIRE OPAL



G2 NASA



G2 FROSTED GRANITE



G2 WHITE MAHOGANY



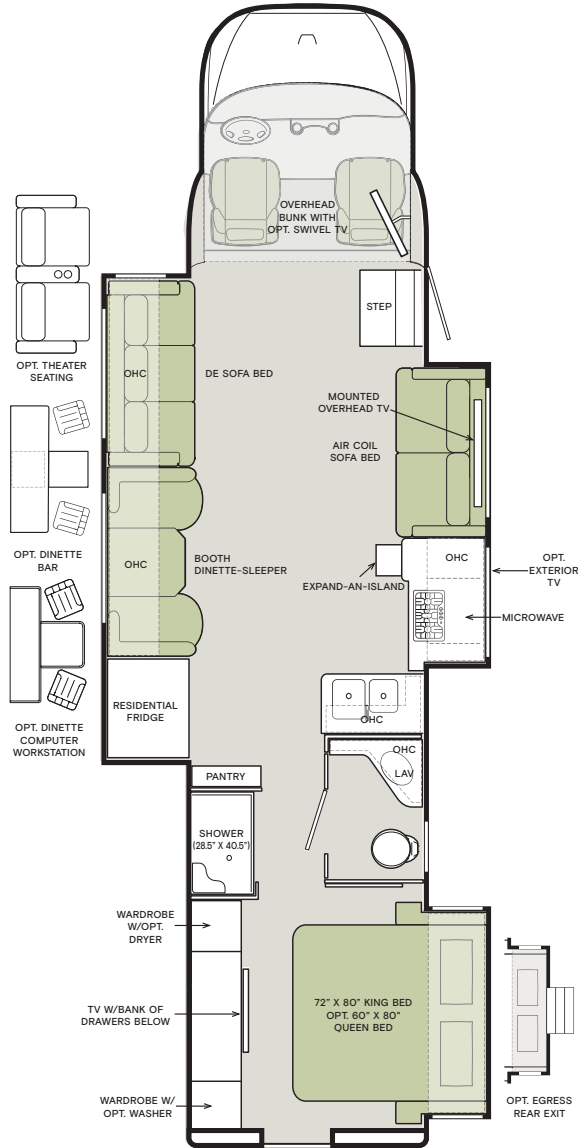
G2 GLACIER BLUE

## Floor Plans

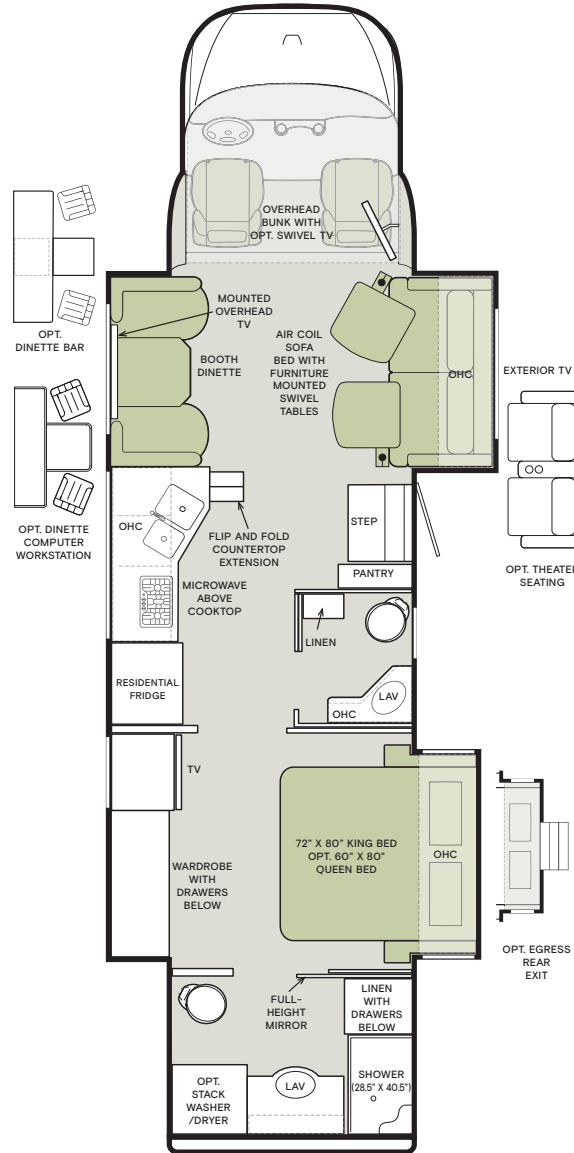


The design of every Allegro Bay floor plan must meet four essential criteria: Maximum space, Optimal organization, Relaxation plus, and Elegant atmosphere. Tiffin's MORE Plans offer your family the most comfortable layout for life on the road.

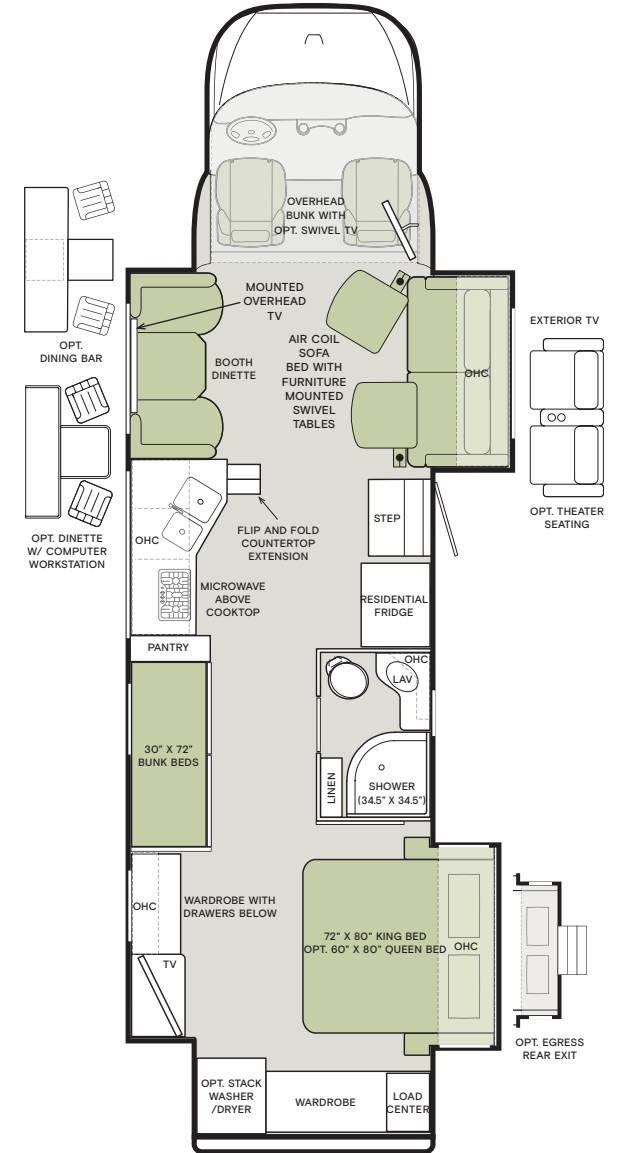
38 AB



38 BB



38 CB



If optional furniture combinations are selected, window locations may vary from diagram shown.

All options may not be available in every model. Because of progressive improvements and specifications, standard and optional equipment are subject to change without notice or obligation.

For a complete and up-to-date list of available options and specifications, visit [tiffinmotorhomes.com](http://tiffinmotorhomes.com).

## Interior Décor

Make your experience on the road all your own. Express yourself by choosing the interior appointments such as cabinet finishes, flooring, and décor ensembles for every part of your motorhome. In the 2024 Allegro Bay, you'll be able to go in style no matter where your adventure takes you.



**MR. BOB TIFFIN  
RECOMMENDS**  
**SOLSTICE  
DÉCOR PACKAGE  
WITH PLATINUM  
CABINETS.**

## FLOORING

NEW

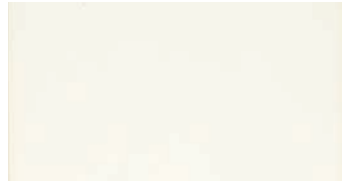


MARBLE OBSESS GLAZED  
Porcelain Tile

## CABINETS



SHADOW



WHITE LINEN

NEW



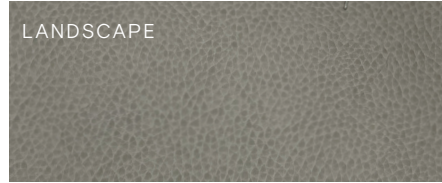
PLATINUM

NEW

Images shown are representations of paint layouts only and do not reflect all exterior features or options. Colors shown may slightly differ from colors on actual product. Colors of interior decor options shown may vary from colors on actual product.

## STONEY CREEK

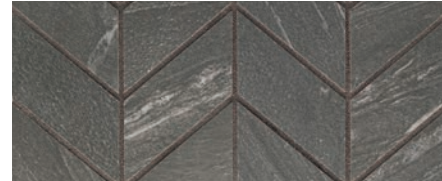
LANDSCAPE



FURNITURE



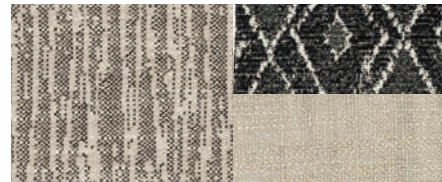
WINDOW TREATMENT



BACKSPLASH



COUNTERTOP



LIVING ROOM

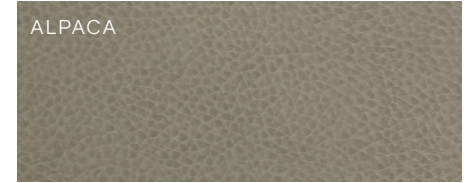


MASTER SUITE

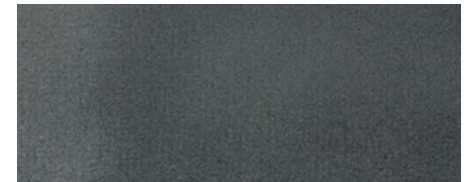
## SOLSTICE

NEW

ALPACA



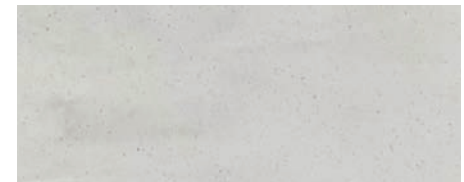
FURNITURE



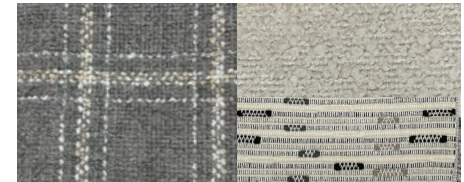
WINDOW TREATMENT



BACKSPLASH



COUNTERTOP



LIVING ROOM



MASTER SUITE

## Specifications, Features, and Options

KEY : S : Standard Feature | O : Optional Feature; Additional costs may apply | D : Dependent; Availability is dependent on selection of another option | - : Not Available

WEIGHTS AND MEASURES	38 AB	38 BB	38 CB
<b>DIMENSIONS</b>			
Overall Length (approx.) <sup>1</sup>	39' 4"	39' 4"	39' 4"
Wheel Base	279"	279"	279"
Overall Width <sup>1</sup>	101"	101"	101"
Overall Height	13' 3"	13' 3"	13' 3"
Minimum Garage Height	14'	14'	14'
Interior Height	82.5"	82.5"	82.5"
Interior Width	96"	96"	96"
Square Footage (approx.) <sup>2</sup>	310	315	320
Basement Storage (cubic feet, approx.)	136	114	114
<b>WEIGHT LIMITS</b>			
GAWR-Front (pounds)	12,000	12,000	12,000
GAWR-Rear (pounds)	21,000	21,000	21,000
GVWR (pounds)	33,000	33,000	33,000
Maximum Trailer Weight (pounds) <sup>3</sup>	12,000	12,000	12,000
Hitch Rating (pounds)	12,000	12,000	12,000
GCWR (pounds)	45,000	45,000	45,000
<b>CAPACITIES</b>			
Fuel Tank (gallons)	100	100	100
DEF Tank (gallons) <sup>4</sup>	10	10	10
Fresh Water (gallons)	150	150	150
Grey Water (gallons)	70	70	70
Black Water (gallons)	45	45	45
LPG Tank (gallons)	24	24	24
<b>QUANTITIES</b>			
Number of Slideouts	3	3	3
Sleeping Capacity <sup>5</sup>	4 to 6	3 to 5	5 to 7
Sleeping Areas <sup>5</sup>	3 to 5	2 to 4	4 to 6
Seat Belts <sup>5</sup>	6 to 8	4 to 6	4 to 6
Seating Capacity <sup>5</sup>	6 to 8	4 to 6	4 to 6

<sup>1</sup> The approximated coach width and length does not include side-view mirrors and rear ladders.

<sup>2</sup> Square footage was calculated with the slide-outs fully extended. Calculations only include living areas and do not incorporate the driver's compartment.

<sup>3</sup> Maximum Trailer Weight is dependent on the loading and towing variables which include the GVWR, GAWR and GCWR, as well as adequate trailer brakes.

<sup>4</sup> Diesel Exhaust Fluid (DEF) is the active component used in Selective Catalytic Reduction (SCR) engines to reduce nitrogen oxide emissions by 90% to meet EPA standards.

<sup>5</sup> Dependent on furniture and dinette options.

### CHASSIS AND DRIVETRAIN

<ul style="list-style-type: none"> <li>Freightliner® S2RV Chassis</li> <li>Cummins® B6.7 360 HP Diesel Engine with 800 lb-ft Torque <sup>1</sup></li> <li>Two-wheel Drive</li> <li>185-Amp Alternator</li> <li>Allison® 3000 MH 6-speed Automatic Transmission with Lock-up Torque Converter</li> <li>Front and Rear 275/80R 22.5 Tires</li> <li>(2) 12-Volt Flooded Lead-Acid Chassis Batteries</li> </ul>	<ul style="list-style-type: none"> <li>Hydraulic Leveling Jacks with Control Panel</li> <li>Taper Leaf Front Suspension</li> <li>Freightliner® Airliner® Rear Suspension with Manual Dump Valve</li> <li>Rear Sway Bar</li> <li>Custom Tuned Sachs® Shock Absorbers</li> <li>Eaton Tractech NoSPIN® Differential</li> <li>Front Radiator</li> <li>Full Air Brake System with Automatic Slack Adjusters</li> </ul>	<ul style="list-style-type: none"> <li>Heated Air Tanks with Auto Drain Valve</li> <li>Single Stage Variable Geometry Turbocharger (VGT) Engine Brake</li> <li>Manual Parking Brake</li> <li>Rear Fuel Fill</li> <li>Automatic Traction Control</li> <li>Cruise Control</li> <li>Tire Inflation Kit with Quick Disconnect Fitting</li> </ul>
---	---	--

CHASSIS AND DRIVETRAIN OPTIONS	38 AB	38 BB	38 CB
Wheels			
Aluminum Wheels	S	S	S
Black Aluminum Wheels <sup>2</sup>	O	O	O

<sup>1</sup> Peak horsepower achieved at 2,600 RPM. Peak torque achieved at 1,800 RPM.

<sup>2</sup> Automatically included with Midnight exterior color package.

### CONSTRUCTION

<ul style="list-style-type: none"> <li>Seamless One-piece Gel-coat Fiberglass Molded Roof Cap</li> <li>5 1/4" Formed Roof Insulation</li> <li>Tubular Aluminum Roof Skeleton Frames</li> <li>Extraordinaire™ Ducted Air Cooling System</li> </ul>	<ul style="list-style-type: none"> <li>One-piece Molded Gel-coat Fiberglass Front and Rear Caps</li> <li>Crane® Composites Noble® Select All-Composite Exterior Sidewalls</li> <li>Tubular Aluminum Wall Skeleton Frames</li> <li>High-performance Thermal Insulation in Sidewalls</li> </ul>	<ul style="list-style-type: none"> <li>Steel Floor Skeleton</li> <li>Engineered Wood Sub-flooring</li> <li>1 1/2" Thick Thermal Insulation in Floor</li> <li>Steel Basement Construction</li> <li>Rust Protective Undercoating</li> <li>Hydraulic Slide-out Mechanisms</li> </ul>
---	---	---

### ELECTRICAL

<ul style="list-style-type: none"> <li>Spyder Controls Multiplex System</li> <li>Firefly Integrations Mira Module <sup>1</sup></li> <li>Centralized 7.5" Spyder System Main Monitor</li> <li>Interior Entryway Spyder System Color Touchscreen</li> <li>Additional Spyder Color Touchscreens Throughout Coach</li> <li>8.0-Kilowatt Onan® Quiet Diesel Generator</li> <li>2,000-Watt Pure Sine Wave Inverter Charger with Auto-Gen Start and Interior Remote Control <sup>2</sup></li> </ul>	<ul style="list-style-type: none"> <li>(2) 15,000-BTU Air Conditioners with Heat Pumps</li> <li>50-Amp Shore Power with Powered Retract Reel</li> <li>Auxiliary Solar Port</li> <li>HD Over-the-air Antenna</li> <li>Park Cable and Ground Satellite Hook-up</li> <li>Prep for In-motion Satellite</li> <li>Blu-ray™ Player</li> <li>Satellite Receiver <sup>3</sup></li> <li>12-Volt Breaker Panel</li> <li>12-Volt Disconnect Switch</li> </ul>	<ul style="list-style-type: none"> <li>Rotary Disconnect Switches for House Batteries, Chassis Batteries, and Inverter</li> <li>Ground Fault Circuit Interrupter (GFCI) Outlets at Galley, Lavatories, and Sewer Bay</li> <li>110-Volt Exterior Receptacle</li> <li>Surge Guard® Transfer Switch</li> <li>USB Receptacles Throughout Coach Satellite Receiver</li> </ul>
--	---	--

ELECTRICAL OPTIONS	38 AB	38 BB	38 CB
Heating and Cooktop Power Source			
Liquid Propane (LP) Coach <sup>4</sup>	S	S	S
Hydronic Heating & Electronic Appliance Equipped Coach <sup>5</sup>	O	O	O
House Batteries			
(4) 6-Volt, 210-Amp Hours Extended Cycle AGM House Batteries	S	S	S
(2) 12-Volt, 270-Amp Hours Lithium House Batteries	O	O	O
Space Heating			
(1) 35,000-BTU Ducted Furnace <sup>6</sup>	D	D	D
Aqua-Hot® 250D Heat Exchanger <sup>7</sup>	D	D	D
Solar Panels			
Prep for Solar Panels <sup>8</sup>	O	O	O
(3) 200-Watt Solar Panels with (1) 30-Amp Controller	O	O	O
In-motion Satellite Dish	O	O	O
Wi-Fi Booster	O	O	O

<sup>1</sup> Download the accompanying Vegatouch app to control your coach locally within Bluetooth range.

<sup>2</sup> Automatic generator start capabilities controlled through Spyder Controls Multiplex System.

<sup>3</sup> Requires subscription.

<sup>4</sup> Propane is used to power the ducted furnaces, the water heater, and the liquid propane cooktop.

<sup>5</sup> Replaces the ducted furnaces, the Truma AquaGo™ water heater, and the liquid propane cooktop with an Aqua-Hot® heat exchanger and induction cooktops. Removes LPG tank. Formerly known as "All-Electric Coach".

<sup>6</sup> Standard with LP coach option.

<sup>7</sup> Replaces ducted furnaces when hydronic heating & electronic appliance equipped coach option is selected. Aqua-Hot® heat exchanger provides both heated air and water.

<sup>8</sup> Includes docking ports for aftermarket solar panels.

### PLUMBING

<ul style="list-style-type: none"> <li>Aqua View Showermiser™</li> <li>Water Filter</li> <li>Water Pump Switch Access from Spyder System and Sewer Bay Board</li> <li>Low-point Water Drain Lines</li> </ul>	<ul style="list-style-type: none"> <li>Black Holding Tank Flush System</li> <li>Gravity Water Fill</li> <li>Tank Level Monitor System</li> <li>Exterior Sewer Bay with Winterization System and Gravity Black and Grey Evacuation Ports</li> </ul>	<ul style="list-style-type: none"> <li>Exterior Rinse Hose with Shower Head</li> <li>Fresh Water Hookup for City Water and Tank Fill</li> </ul>
--	--	---

PLUMBING OPTIONS	38 AB	38 BB	38 CB
Water Heater			
Truma AquaGo™ Comfort Instant Water Heater <sup>1</sup>	D	D	D
Aqua-Hot® 250D Heat Exchanger <sup>2</sup>	D	D	D
Water Heater Bypass System <sup>3</sup>	D	D	D
Water Tank Heating			
Heated Fresh and Holding Tank Compartment via Heat Duct	S	-	S
Heated Fresh and Holding Tanks via Tank Pads	-	S	-

<sup>1</sup> Controllable through the Truma control panel and the Spyder System control panels. Standard with LP coach option.

<sup>2</sup> Replaces Truma AquaGo™ Comfort instant water heater when hydronic heating & electronic appliance equipped coach option is selected. Aqua-Hot® heat exchanger provides both heated air and water.

<sup>3</sup> Standard with LP coach option. Not necessary with hydronic heating & electronic appliance equipped coach option.

## Specifications, Features, and Options (Cont'd)

KEY : S : Standard Feature | O : Optional Feature; Additional costs may apply | D : Dependent; Availability is dependent on selection of another option | - : Not Available

EXTERIOR			
<ul style="list-style-type: none"> <li>Full-body Paint with (3) Layers of Clear Coat</li> <li>Single-colored Slide-out Endwalls</li> <li>High Performance Protective Film on Front Cap and Select Areas</li> <li>(1) Girard® Side-mounted Powered Patio Awning with Integrated LED Lighting</li> <li>Girard® Slide-out Toppers</li> <li>Side-swinging Exterior Storage Doors with Gas Shocks</li> </ul>	<ul style="list-style-type: none"> <li>Lockable Handles on Compartment Doors</li> <li>Motion-sensor Lights in Cargo Bay</li> <li>GatorHyde-lined Cargo Walls and Floor</li> <li>Frameless Style Tinted Windows</li> <li>Exterior Patio Light</li> <li>Driver and Passenger Side Front Cap Exterior Entry Light</li> <li>Daytime Running Lights</li> <li>Heated Power Side-view Mirrors</li> </ul>	<ul style="list-style-type: none"> <li>Exterior TV with Soundbar</li> <li>Fast Charge USB ports within Exterior TV Compartment</li> <li>Lightweight Entry Door with Integrated Screen</li> <li>Entry Door Grab Handle</li> <li>Deadbolt Front Entrance Lock</li> <li>Automatic Double Entry Step</li> <li>Front Door Entry System via Key Fob<sup>1</sup></li> <li>Mud Flaps</li> </ul>	

EXTERIOR OPTIONS	38 AB	38 BB	38 CB
Lippert™ On-The-Go™ Telescoping Ladder <sup>2</sup>	O	O	O

<sup>1</sup> Entry system does not include exterior Spyder keypad.

<sup>2</sup> All units will ship with a Lippert™ On-The-Go™ Prepped Receiver installed.

INTERIOR			
<ul style="list-style-type: none"> <li>Handcrafted Overhead Cabinetry with Honeycomb-patterned Glass</li> <li>Carpeted Step Well with Composite Steps</li> <li>Living Area TV</li> <li>Solid Surface Galley Countertop</li> <li>Treated Carpet in Slide-out Floors</li> </ul>	<ul style="list-style-type: none"> <li>Handcrafted Slide-out Fascia</li> <li>Soft Touch Vinyl Ceiling</li> <li>Dimmable LED Lighting</li> <li>Prep for Washer and Dryer</li> <li>Carbon Monoxide Detector</li> <li>LPG Leak Detector</li> <li>Smoke Detector</li> </ul>	<ul style="list-style-type: none"> <li>Fire Extinguisher</li> <li>Solar and Privacy Shades</li> <li>Soft-closing Drawers</li> <li>Powered Roof Vents</li> <li>Interior Grab Handle at Entry Door</li> <li>Egress Windows Throughout Coach</li> </ul>	

INTERIOR OPTIONS	38 AB	38 BB	38 CB
Interior Décor Packages	Stoney Creek O	O	O
	Solstice <b>NEW</b> O	O	O
Upholstery Fabrics	Ultrafabrics® Montage Landscape <sup>1</sup> <b>NEW</b> D	D	D
	Ultrafabrics® Montage Alpaca <sup>2</sup> <b>NEW</b> D	D	D
Cabinetry Color	Shadow O	O	O
	White Linen <b>NEW</b> O	O	O
	Platinum <b>NEW</b> O	O	O
Floor Tiles	Marble Obsess Glazed Porcelain Tile <b>NEW</b> S	S	S
Washer & Dryer	Side-by-side Washer and Dryer <sup>2</sup> O	-	-
	Stacked Washer and Dryer -	O	O
Bedroom Egress Door	O	O	O
Central Vacuum System	O	O	O

<sup>1</sup> Always paired with Stoney Creek Fabric Suite.

<sup>2</sup> Always paired with Solstice Fabric Suite.

DRIVER'S COMPARTMENT			
<ul style="list-style-type: none"> <li>Ultrafabrics® Montage Pneumatic Suspension Driver and Passenger Seats</li> <li>Dual Driver and Passenger Seat Armrests</li> <li>Mounted Seatbelt Brackets</li> <li>Dual Chamber Lumbar Support on Driver and Passenger Seats</li> <li>Adjustable Damper on Driver and Passenger Seats</li> <li>Tilt, Fore and Aft, Backrest, and Height Adjustment on Driver and Passenger Seats</li> <li>Leather Wrapped, Tilt and Telescoping Steering Wheel</li> <li>Ergonomic Dash with Woodgrain Driver Accents</li> <li>Dual Center Cupholders</li> <li>Roof Mounted Storage Compartments</li> </ul>	<ul style="list-style-type: none"> <li>Backlit Instrument Cluster</li> <li>Generator Start &amp; Stop Rocker Switch</li> <li>USB Dash Receptacles</li> <li>12-Volt Dash Receptacle</li> <li>Dash Rocker Switches</li> <li>Driver and Passenger Map Lights</li> <li>One-piece, Tinted, Roped-In Windshield</li> <li>Single-motor Intermittent Windshield Wipers</li> <li>Automatic LED Headlights</li> <li>Trailer Marker Light Switch Integrated with Headlight Switch</li> <li>Side-view Cameras<sup>1</sup></li> <li>Color Back-up Camera<sup>2</sup></li> <li>10" Detachable Touchscreen featuring Media Center, AM, FM, and Satellite Radio, Bluetooth®, and Camera Monitoring<sup>3</sup></li> </ul>	<ul style="list-style-type: none"> <li>Dash and B-Pillar Mounted Speakers</li> <li>In-dash Navigation System via 10" Detachable Touchscreen</li> <li>Front Overhead Bunk with Privacy Curtains<sup>4</sup></li> <li>Cab Skylight</li> <li>Auxiliary Start Switch</li> <li>Dual Electric Horns</li> <li>Air Horn with Pull-cord</li> <li>Powered Windows</li> <li>Driver and Passenger Sun Visors</li> <li>Powered Door Locks</li> <li>Integrated Door Storage Pockets</li> <li>Stepwell Light Mounted Inside Doors</li> <li>Privacy Curtain</li> </ul>	

DRIVER'S COMPARTMENT OPTIONS	38 AB	38 BB	38 CB
Floor Mats <b>NEW</b>	O	O	O
Overhead Bunk TV <sup>5</sup> <b>NEW</b>	O	O	O

<sup>1</sup> Mounted on side of the coach and activated by turn signals. Integrated with 10" Detachable Touchscreen.

<sup>2</sup> Integrated with 10" Detachable Touchscreen.

<sup>3</sup> Subscription required for satellite radio.

<sup>4</sup> Maximum weight limit of overhead bunk is 300 pounds. Now includes telescoping ladder to access bunk.

<sup>5</sup> Now available on 38 AB and 38 BB.

DINETTE AND LIVING AREA		SLEEPS	SEATS	SEATBELTS	38 AB	38 BB	38 CB
Driver Side Dinette	75" Booth Dinette-Sleeper <sup>1</sup>	1	4	2	S	S	S
	75" Dinette Bar <sup>2</sup>	-	2	-	O	O	O
	75" Dinette with Chairs <sup>3</sup>	-	2	-	O	O	O
Driver Side Furniture	74" DE Sofa Bed <sup>4</sup>	1	2	2	S	-	-
	74" Theater Seating	-	2	2	O	-	-
Driver Side	Bunk Beds (28" x 70") <sup>5</sup> <b>UPDATED</b>	2	-	-	-	-	S
Passenger Side Furniture	68" Air Coil Sofa Bed <sup>6</sup>	1	2	2	S	-	-
	74" Air Coil Sofa Bed with Furniture-mounted Swivel Tables <sup>6</sup>	1	2	2	-	S	S
	74" Theater Seating	-	2	2	-	O	O

<sup>1</sup> Piece of furniture converts to 72" x 45" sleeping area.

<sup>2</sup> Includes (2) freestanding accent chairs and (2) wooden folding chairs.

<sup>3</sup> Formerly known as "Dinette Computer Workstation". The printer bump-out was removed for more leg room. The keyboard and printer trays have been converted to a drawer and a fixed shelf to maximize storage. Includes (2) freestanding accent chairs and (2) wooden folding chairs.

<sup>4</sup> Piece of furniture converts to 67" x 49" sleeping area.

<sup>5</sup> Now includes tablet holders in each bunk.

<sup>6</sup> Mattress measures 72" x 52" and includes internal pump.

KITCHEN			
<ul style="list-style-type: none"> <li>20-Cubic Foot Stainless Steel Residential Refrigerator with Top Freezer<sup>1</sup></li> <li>1.7-Cubic Foot Smart Convection Microwave with Air Fry</li> </ul>	<ul style="list-style-type: none"> <li>Double Bowl Kitchen Sink with Single Lever Faucet and Pull-down Sprayer</li> <li>Galley Overhead Cabinets</li> <li>Panoramic Galley Window</li> </ul>	<ul style="list-style-type: none"> <li>Task Lighting</li> <li>Full Tile Backsplash</li> <li>Solid Surface Galley Countertop, Sink, and Cooktop Cover</li> </ul>	

KITCHEN OPTIONS	38 AB	38 BB	38 CB
Cooking Appliances	Three-Burner Liquid Propane Cooktop <sup>2</sup> D	D	D
	Two-Burner Induction Cooktop <sup>3</sup> D	D	D
Drawer-style Dishwasher	O	O	O
Extendable Countertops	Manual Release Expand-An-Island S	-	-
	Flip and Fold Countertop Extension -	S	S

<sup>1</sup> Refrigerator volume is approximated.

<sup>2</sup> Standard with LP coach option. Not available with hydronic heating & electronic appliance equipped coach option.

<sup>3</sup> Replaces three-burner liquid propane cooktop when hydronic heating & electronic appliance equipped coach option is selected.

BEDROOM			
<ul style="list-style-type: none"> <li>Bedside Windows</li> <li>Bed Comforter with Throw Pillows</li> <li>Handcrafted Privacy Door</li> </ul>	<ul style="list-style-type: none"> <li>LED Reading Lights</li> <li>Nightstand with Solid Surface Tops</li> <li>Mounted Bedroom TV</li> </ul>	<ul style="list-style-type: none"> <li>Centralized Entertainment Center</li> <li>Ceiling Fan</li> </ul>	

BEDROOM OPTIONS	38 AB	38 BB	38 CB
Mattress	Memory Foam King Mattress (72" x 80") S	S	S
	Memory Foam Queen Mattress (60" x 80") O	O	O
Under Bed Storage	-	S	S
Bed Slide	Window at Head of Bed <sup>2</sup> D	D	D
	Mounted Headboard <sup>3</sup> D	D	D
	Overhead Cabinets S	S	S
Shoe Rack	-	-	S
Bedroom Storage	Wardrobe with Drawers Underneath S	S	-
	Floor-to-ceiling Closet Space -	-	S
Bedroom Egress Door	O	O	O

<sup>1</sup> Houses Blu-ray™ player, satellite receiver, and cable TV hook-up.

<sup>2</sup> Standard with optional bedroom egress door.

<sup>3</sup> Not available with optional bedroom egress door.

BATHROOM			
<ul style="list-style-type: none"> <li>(1) Porcelain Master Bathroom Sink</li> <li>Solid Surface Lavatory Top</li> <li>Handheld Shower Head with Slide Bar</li> </ul>	<ul style="list-style-type: none"> <li>Shower Skylight</li> <li>Shower LED Light with Sliding Cover</li> <li>Towel and Toilet Paper Holders</li> </ul>	<ul style="list-style-type: none"> <li>Mirrored Medicine Cabinet</li> <li>Roof Vent Fan</li> <li>Base Cabinet</li> </ul>	

BATHROOM OPTIONS	38 AB	38 BB	38 CB
Number of Bathrooms	(1) Bathroom S	-	S
	(1) Bathroom and (1) Half-bath -	S	-
Shower	One-Piece Molded Fiberglass Shower (28.5" x 40.5") S	S	-
	One-Piece Molded Fiberglass Shower (34.5" x 34.5") -	-	S
Toilet	(1) Gravity Flush Toilet S	-	S
	(1) Electric Gravity Flush Toilet and (1) Macerator Toilet -	S	-

1

YEAR OR 12,000 MILES  
LIMITED WARRANTY

5

YEARS OR 50,000 MILES  
DELAMINATION  
LIMITED WARRANTY

10

YEARS OR 50,000 MILES  
CONSTRUCTION  
LIMITED WARRANTY

1

YEAR COACH  
ROADSIDE SERVICE

∞

ONGOING  
CUSTOMER SUPPORT

FOR SALES CALL 256-356-8661 AND PARTS & SERVICE CALL 256-356-0261 OR VISIT [TIFFINMOTORHOMES.COM](http://TIFFINMOTORHOMES.COM)

105 2ND ST NW RED BAY, AL 35582  



**TIFFIN**

MOTORHOMES

All trademarks and logos are owned or used under license by Tiffin Motor Homes, Inc. and include, but are not limited to: TIFFIN®, MANY ADVENTURES. ONE DREAM™, ALLEGRO®, ALLEGRO BREEZE®, ALLEGRO RED®, PHAETON®, ALLEGRO BUS®, ZEPHYR®, WAYFARER®, ROUGHING IT SMOOTHLY®, OPEN ROAD®, POWERGLIDE®, CAHABA®, BYWAY™, and associated logos and emblems. Unauthorized use of any trademark of Tiffin Motor Homes, Inc. is strictly prohibited.

© Copyright 2023 Tiffin Motor Homes, Inc.

For all information concerning the limited warranty provided by Tiffin, please refer to the full written limited warranty set forth on the Tiffin website or held by our authorized dealerships. Please note, some interior furnishings not included. Revised 9/8/23