

TIFFIN

2024

CLASS-A

ZEPHYR



2024 ZEPHYR

## A SOPHISTICATED ADVENTURE AWAITS.

Indulgent comfort. Premium amenities. Modernized technology. They're all yours in the stunning new 2024 Zephyr, the flagship of the Tiffin lineup. From front to back, the new Zephyr includes more luxurious features than ever before. Its 605 HP engine paired with Tiffin's PowerGlide Chassis provides a smooth, powerful ride. The cockpit offers a stunning array of advanced features that keep you confidently in control. Then, once you've arrived, it's time to enjoy the Zephyr's overflowing complement of upscale amenities. The MIRA app puts control of all of your coach's systems in the palm of your hand, right on your smartphone while in or around your coach. The cook's kitchen is immaculately appointed for even the biggest feasts. Plush seating and 7' ceilings keep things comfortable. And the ample bedroom is designed for maximum relaxation. All with Tiffin's handcrafted cabinetry throughout. On the road or at your destination, this RV stands alone. Take a trip into luxury in your new Zephyr.



Top to bottom: Master Bedroom shown with Haiku Décor Package (some accessories shown are not standard), Kitchen Area shown with Black Cherry Cabinetry and Gunmetal flooring, Dinette with chairs shown.

## Premium Paint System



Our eight-step, full-body paint system features premium grade paints sealed with four layers of clear coat with ultraviolet protection. An additional layer of high-performance film protects the front of the coach and select areas.

Images shown are representations of paint layouts only and do not reflect all exterior features or options. Colors shown may slightly differ from colors on actual product.



G12 CARDINAL



G12 NASA

## Generation 12 Paint Schemes



G12 RUSTIC RED



G12 VOLTAGE



G12 CINDERWOOD



G12 FIRE OPAL

Premium Paint System - Generation 13 Paint Schemes



G13 RUSTIC RED



G13 CARDINAL



G13 CINDERWOOD



G13 NASA



G13 VOLTAGE



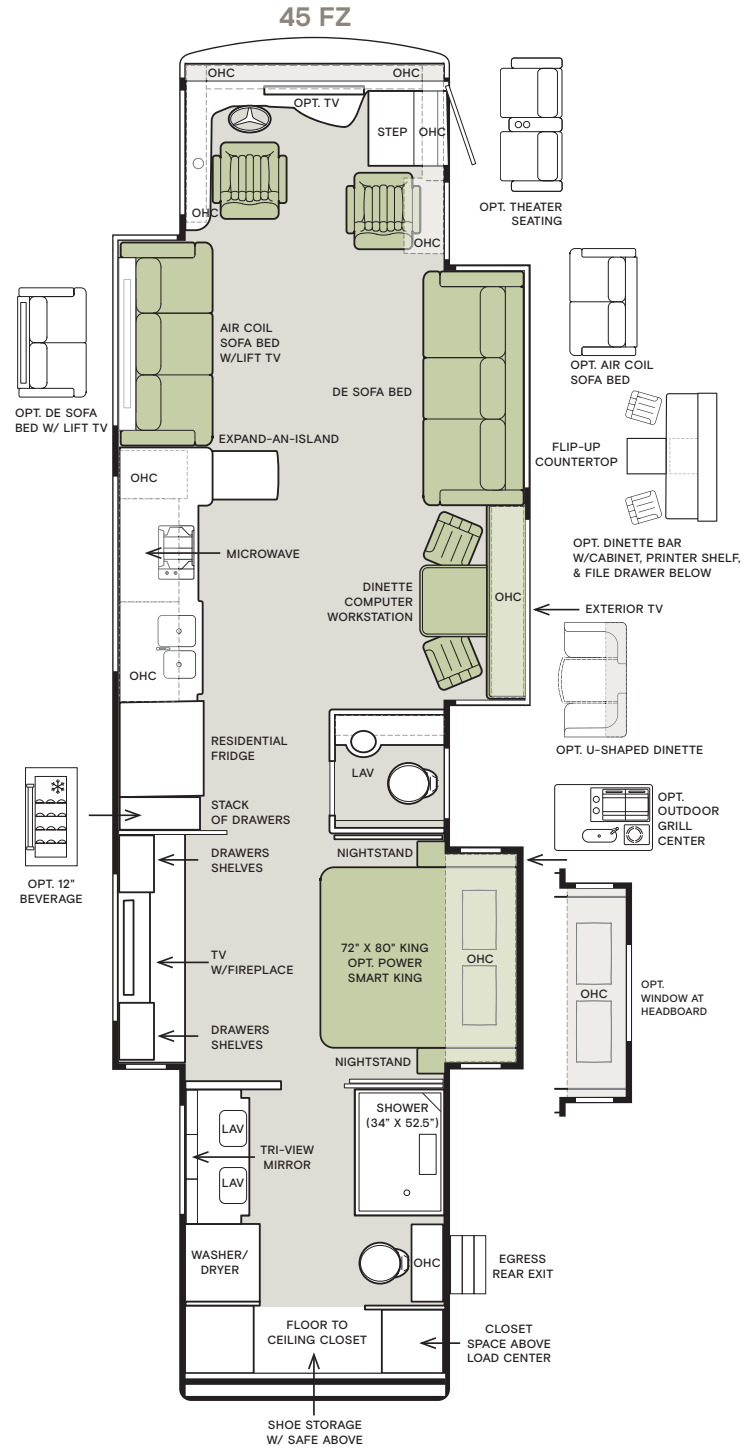
G13 FIRE OPAL

Images shown are representations of paint layouts only and do not reflect all exterior features or options. Colors shown may slightly differ from colors on actual product.

## Floor Plans



The design of every Zephyr floor plan must meet four essential criteria: Maximum space, Optimal organization, Relaxation plus, and Elegant atmosphere. Tiffin's MORE Plans offer your family the most comfortable layout for life on the road.



If optional furniture combinations are selected, window locations may vary from diagram shown.  
 All options may not be available in every model. Because of progressive improvements and specifications, standard and optional equipment are subject to change without notice or obligation.  
 For a complete and up-to-date list of available options and specifications, visit [tiffinmotorhomes.com](http://tiffinmotorhomes.com).

## Interior Décor

Make your experience on the road all your own. Express yourself by choosing the interior appointments such as cabinet finishes, flooring, and décor ensembles for every part of your motorhome. In the 2024 Zephyr, you'll be able to travel in style no matter where your adventure takes you.



**MR. BOB TIFFIN  
RECOMMENDS  
JEWEL OF THE NILE  
DÉCOR PACKAGE  
WITH SHADOW CABINETS  
AND GEMSTONE  
FLOORING.**

## FLOORING



GEMSTONE



GUNMETAL

## CABINETS



SHADOW



WHITE LINEN



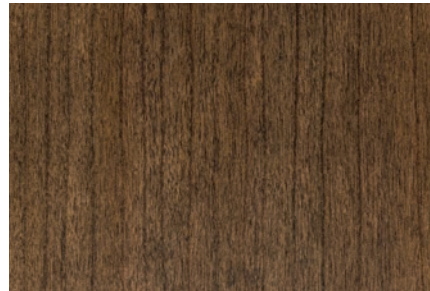
SANDSTONE

NEW



BLACK TRUFFLE

NEW



GLAZED CANYON CHERRY



GLAZED HONEY NATURAL CHERRY



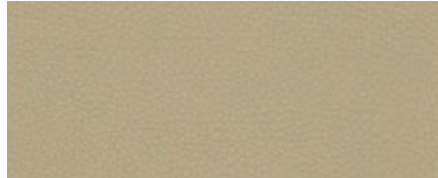
PLATINUM

NEW

BLUE DELTA® SWEET HOME



WINDOW TREATMENT



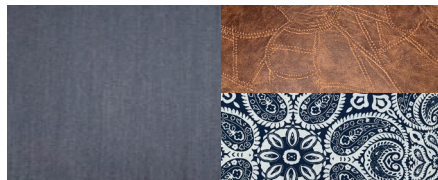
ULTRALEATHER® TATAMI MAT



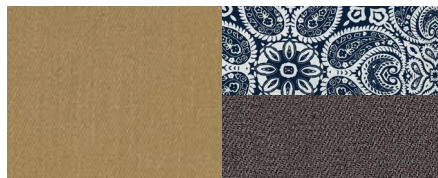
BACKSPLASH



COUNTERTOP

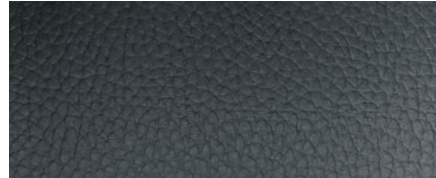


LIVING ROOM



MASTER SUITE

BLUE DELTA® ROCKER CHIC



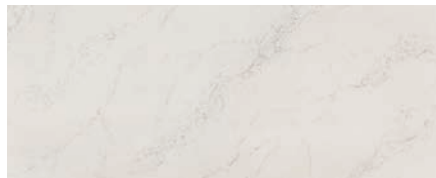
WINDOW TREATMENT



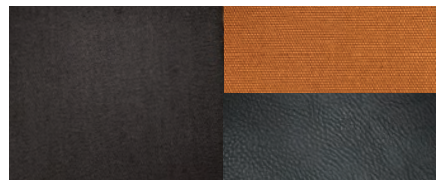
ULTRALEATHER® RICE PAPER



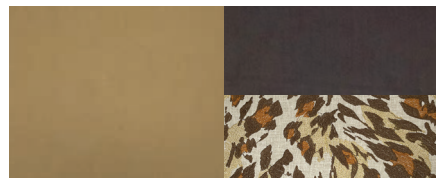
BACKSPLASH



COUNTERTOP



LIVING ROOM

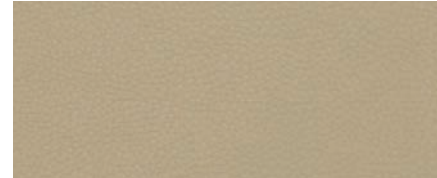


MASTER SUITE

HAIKU



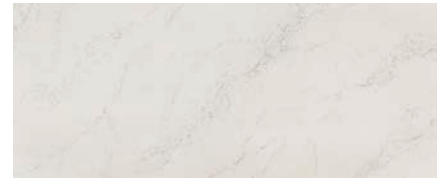
WINDOW TREATMENT



ULTRALEATHER® TATAMI MAT



BACKSPLASH



COUNTERTOP

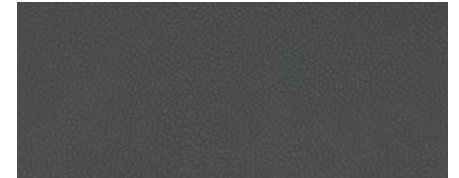


LIVING ROOM

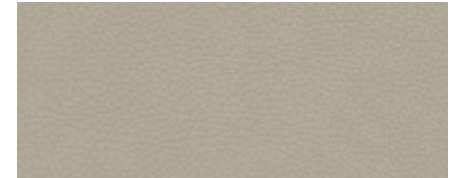


MASTER SUITE

JEWEL OF THE NILE



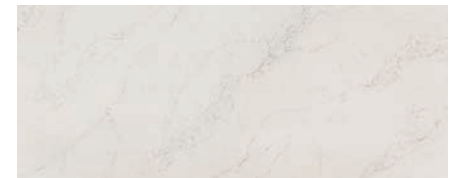
WINDOW TREATMENT



ULTRALEATHER® RICE PAPER



BACKSPLASH



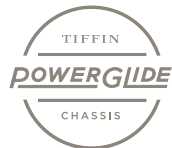
COUNTERTOP



LIVING ROOM



MASTER SUITE



Reflecting over four decades of innovation, Tiffin's exclusive, custom-built PowerGlide Chassis demonstrates our ongoing commitment to delivering a motorhome experience that's precisely engineered for durability, reliability, performance, and control wherever your journey takes you.

#### MULTIPLEX WIRING WITH DIAGNOSTICS

The PowerGlide's multiplexed electrical system, with auto-reset fuses and relays, uses less wiring and increases reliability, efficiency, and flexibility.

#### DYNAMOMETER TESTING

Our dynamometer testing simulates full power road testing, enabling us to better assess engine performance, cooling system function, and instrumentation.

#### POWERGLIDE CHASSIS WARRANTY

The PowerGlide carries a Tiffin-backed limited warranty for three years or 50,000 miles against defects in materials and workmanship.

#### HUCK-BOLTED CONSTRUCTION

Huck Bolts are precision engineered two-piece fasteners. Huck Bolts are vibration resistant and provide direct metal to metal contact when installed.

For all information concerning the PowerGlide limited warranty provided by Tiffin, please refer to the full, written limited warranty set forth on the Tiffin website or held by our authorized dealerships. For a complete and up-to-date list of available options and specifications, visit [tiffinmotorhomes.com](http://tiffinmotorhomes.com).



# Specifications, Features, and Options

KEY : S : Standard Feature | O : Optional Feature; Additional costs may apply | D : Dependent; Availability is dependent on selection of another option | — : Not Available

| WEIGHTS AND MEASURES                         | 45 FZ   |
|--|---------|
| <b>DIMENSIONS</b>                            |         |
| Overall Length (approx.) <sup>1</sup>        | 45'     |
| Wheel Base <sup>2</sup>                      | 316"    |
| Overall Width <sup>1</sup>                   | 101"    |
| Overall Height                               | 13' 4"  |
| Minimum Garage Height                        | 14'     |
| Interior Height                              | 83"     |
| Interior Width                               | 96"     |
| Square Footage (approx.) <sup>3</sup>        | 440     |
| Basement Storage (cubic feet, approx.)       | 237     |
| <b>WEIGHT LIMITS</b>                         |         |
| GAWR-Front (pounds)                          | 20,000  |
| GAWR-Tag Axle (pounds)                       | 13,000  |
| GAWR-Rear (pounds)                           | 21,000  |
| GVWR (pounds)                                | 54,000  |
| Maximum Trailer Weight (pounds) <sup>4</sup> | 20,000  |
| Hitch Rating (pounds)                        | 20,000  |
| GCWR (pounds)                                | 74,000  |
| <b>CAPACITIES</b>                            |         |
| Fuel Tank (gallons)                          | 150     |
| DEF Tank (gallons) <sup>5</sup>              | 15      |
| Fresh Water (gallons)                        | 100     |
| Grey Water (gallons)                         | 100     |
| Black Water (gallons)                        | 55      |
| <b>QUANTITIES</b>                            |         |
| Number of Slideouts                          | 3       |
| Sleeping Capacity <sup>6</sup>               | 3 to 5  |
| Sleeping Areas <sup>6</sup>                  | 2 to 3  |
| Seat Belts <sup>6</sup>                      | 7 to 10 |
| Seating Capacity <sup>6</sup>                | 9 to 12 |

<sup>1</sup> The approximated coach width and length does not include side-view mirrors or ladders.

<sup>2</sup> Measurement is taken from the center of the steer axle to the centerline between the drive and tag axle.

<sup>3</sup> Square footage was calculated with the slide-outs fully extended.

<sup>4</sup> Maximum trailer weight is dependent on the loading and towing variables which include the GVWR, GAWR, and GCWR, as well as adequate trailer

<sup>5</sup> Diesel Exhaust Fluid (DEF) is the active component used in Selective Catalytic Reduction (SCR) engines to reduce nitrogen oxide emissions by 90% to meet EPA standards.

<sup>6</sup> Dependent on furniture and dinette options.

## CHASSIS AND DRIVETRAIN

- PowerGlide® Raised Rail Rear Engine Diesel Chassis
- Cummins® X15 605 HP Diesel Engine with 1,950 lb-ft Torque <sup>1</sup>
- Two-wheel Drive
- 420-Amp Alternator
- Allison® 4000 MH 6-speed Automatic Transmission with Lock-up Torque Converter
- Aluminum Wheels
- Front 365/70R 22.5 XZA Tires
- Rear 315/80R 22.5 Tires
- (3) 12-Volt Flooded Lead-Acid Chassis Batteries
- Combination Valid™ Air Leveling System with Hydraulic Leveling Jacks
- Integrated Leveling Controls Through Valid™ Instrument Cluster
- ZF Independent Front Suspension
- Front Sway Bar
- Reyco® Granning® Air Ride Rear Suspension
- Custom Tuned Koni Shock Absorbers
- Side-mounted Radiator
- Steerable Tag Axle
- Front and Rear Disc Brakes
- Full Air Brake System with Automatic Slack Adjusters
- Tag Axle Disc Brakes
- Three-stage Compression Brake
- Manual Parking Brake
- Air Force One Tow Vehicle Brake System
- Driver and Passenger Side Fuel Fill
- Tire Pressure Monitoring
- Adaptive Cruise Control
- Automatic Traction Control
- Collision Mitigation with Forward Warning and Active Braking
- Electronic Stability Control

<sup>1</sup> Peak horsepower achieved at 1,800 RPM. Peak torque achieved at 1,150 RPM.

## CONSTRUCTION

- Seamless One-piece Gel-coat Fiberglass Molded Roof Cap
- 6 1/2" Formed Roof Insulation
- Tubular Aluminum Roof Skeleton Frames
- Extraordinaire™ Ducted Air Cooling System
- One-piece Molded Gel-coat Fiberglass Front and Rear Caps
- Steel Cockpit Overhead Support Frame
- Crane® Composites Noble® Select All-Composite Exterior Sidewalls
- Tubular Aluminum Wall Skeleton Frames
- High-performance Thermal Insulation in Sidewalls
- Engineered Wood Sub-flooring
- Laminated Elevated Sub-Flooring with 2 3/4" Thick Thermal Insulation
- Steel Basement Construction
- Rust Protective Undercoating
- Hydraulic Slide-out Mechanisms
- Extra Storage Chassis Construction <sup>1</sup>

<sup>1</sup> Floor is constructed flush with top of rear engine. Allows for more basement storage and eliminates step in rear bedroom or bathroom walking area.

## ELECTRICAL

- Hydronic Heating & Electronic Appliance Equipped Coach <sup>1</sup>
- Spyder Controls Multiplex System
- Firefly Integrations Eclipse Module <sup>2</sup>
- Centralized 10" Spyder System Main Monitor
- Passenger Console Spyder System Color Touchscreen
- Interior Entryway Spyder System Color Touchscreen
- Exterior Spyder System Color Touchscreen
- Spyder System Color Touchscreen Mounted Under Bedroom Overhead Cabinets
- Additional Spyder Color Touchscreens Throughout Coach
- Powered Generator Slide Tray
- 12.5-Kilowatt Onan® Quiet Diesel Generator
- (3) 15,000-BTU Low Profile Air Conditioners with Heat Pumps and Condensation Drains
- Front Air Conditioner Use While Driving
- Aqua-Hot® 600D Heat Exchanger <sup>4</sup>
- 50-Amp Shore Power with Powered Retract Reel
- Prep for Solar Panels <sup>5</sup>
- Auxiliary Solar Port
- Energy Management System
- HD Over-the-air Antenna
- Park Cable and Ground Satellite Hook-up
- In-motion Satellite Dish <sup>6</sup>
- Trav'ler™ Satellite
- Blu-ray™ Player
- Prewiring for Winegard®
- Satellite Receiver <sup>7</sup>
- 12-Volt Breaker Panel
- 12-Volt Disconnect Switch
- Rotary Disconnect Switches for House Batteries, Chassis Batteries, and Inverter
- Ground Fault Circuit Interrupter (GFCI) Outlets at Galley, Lavatories, and Sewer Bay
- 110-Volt Exterior Receptacle
- Surge Guard® Transfer Switch
- USB Receptacles Throughout Coach
- (1) 3,000-Watt and (1) 2,800-Watt Pure Sine Wave Inverter Chargers, both with Auto-Gen Start and Interior Remote Control <sup>3</sup>

## ELECTRICAL OPTIONS

|                  |   | 45 FZ |
|------------------|---|-------|
| House Batteries  | (6) 6-Volt Extended Cycle AGM Batteries               | S     |
|                  | (3) 12-Volt Lithium Batteries                         | O     |
|                  | Battery Slide-out Tray <sup>8</sup>                   | D     |
| Solar Panels     | (3) 200-Watt Solar Panels with (1) 30-Amp Controller  | D     |
|                  | (6) 200-Watt Solar Panels with (2) 30-Amp Controllers | O     |
| Internet & Phone | Wi-Fi Booster <sup>9</sup>                            | D     |
|                  | Starlink® Pro <sup>7</sup>                            | O     |

<sup>1</sup> Space heating, water heating, and cooking appliances are electrically powered. Formerly known as "All-Electric Coach".

<sup>2</sup> Download the accompanying Vegatouch app to control your coach locally offline using Bluetooth and remotely anywhere there's internet for the coach module (Local control only for slides and awning). Includes a free 90-day remote access trial.

<sup>3</sup> Automatic generator start capabilities controlled through Spyder Controls Multiplex System.

<sup>4</sup> Aqua-Hot® heat exchanger provides both heated air and water.

<sup>5</sup> Includes docking ports for aftermarket solar panels.

<sup>6</sup> High-definition programming is not available on a domed satellite antenna unless you subscribe to DISH Network®.

<sup>7</sup> Requires subscription.

<sup>8</sup> Standard with extended cycle AGM batteries. Not available with lithium batteries.

<sup>9</sup> Standard unless Starlink Pro is optioned.

## PLUMBING

- Aqua-Hot® 600D Heat Exchanger <sup>1</sup>
- Aqua View Electronic Showermiser™
- Water Filter
- Water Pump Switch Access from Spyder System and Sewer Bay Board
- Low-point Water Drain Lines
- Black Holding Tank Flush System
- Gravity Water Fill
- Heated Water and Holding Tank Compartment
- SeeLevel™ Tank Monitor
- Centralized Exterior Sewer Bay with Gravity Black and Grey Evacuation Ports
- Exterior Rinse Hose with Shower Head
- Sewer Bay Hand Sanitizer and Paper Towel Holders
- Fresh Water Hose with Power Retract Reel
- Sewer Hose Storage

<sup>1</sup> Aqua-Hot® heat exchanger provides both heated air and water.

## Specifications, Features, and Options (Cont'd)

KEY : S : Standard Feature | O : Optional Feature; Additional costs may apply | D : Dependent; Availability is dependent on selection of another option | - : Not Available

### EXTERIOR

- Full-body Paint with (4) Layers of Clear Coat
- Striped Slide-out Endwalls
- High Performance Protective Film on Front Cap and Select Areas
- (2) Girard® Roof-mounted Powered Patio Awnings with Integrated LED Lighting and Dual Pitch Feature
- Girard® Powered Door Awning with Integrated LED Lighting
- Girard® Powered Window Awning Package
- Girard® Slide-out Toppers
- Side-swinging Exterior Storage Doors with Gas Shocks
- Lockable Handles on Compartment Doors
- Motion-sensor Lights in Cargo Bay
- 120-Volt and 12-Volt Outlets Inside Cargo Bays
- Pass-through Basement Storage
- Charcoal Carpet Cargo Walls
- Infinity Luxury Woven Vinyl® Basement Floor **NEW**
- Cargo Door Stainless Steel Rocker Trim
- Basement Freezer
- Bonded, Dual-Pane Picture Windows
- Exterior Patio Light
- Fog Lights
- Daytime Running Lights
- Docking Lights
- Exterior Ground Effects Lighting
- Exterior Lighting under Slide-out
- Chrome Power Heated Side-View Mirrors with Integrated Cameras
- Exterior TV with Soundbar
- Fast Charge USB ports within Exterior TV Compartment
- Lightweight Entry Door with Integrated Screen
- Deadbolt Front Entrance Lock
- Lighted Entry Door Grab Handle
- Automatic Stainless Steel Double Entry Step
- Keyless Entry System for Front Entrance and Component Doors
- Mud Flaps
- Custom Rock Guard

| EXTERIOR OPTIONS                                    |  | 45 FZ |
|---|--|-------|
| Slide Trays   | (1) Powered Storage Compartment Slide-out Tray <sup>1</sup>  | S     |
|   | (2) Powered Storage Compartment Slide-out Trays <sup>2</sup> | O     |
| Outdoor Electric Grill <sup>3</sup>                 | <b>NEW</b>   | O     |
| Lippert™ On-The-Go™ Telescoping Ladder <sup>4</sup> |  | O     |

<sup>1</sup> Trays slide out on both sides of motorhome.

<sup>2</sup> Trays slide out on both sides of motorhome. Not combinable with outdoor electric grill.

<sup>3</sup> Outdoor electric grill is installed on a manual slide-out tray. Not combinable with (2) powered storage compartment slide-out trays option.

<sup>4</sup> All units will ship with a Lippert™ On-The-Go™ Prepped Receiver installed.

### INTERIOR

- Solid Surface Step Well with Tile Inserts
- Powered Step Well Cover
- Storage Compartment Within Entry Steps
- Recessed Step Well Lighting
- Living Area TV
- Quartz Countertops
- Tile Slide-out Floors
- Handcrafted Slide-out Fascia
- Soft Touch Vinyl Ceiling
- Dimmable LED Lighting
- Stacked Washer and Dryer
- Gold Heat® Dual Zones Heated Tile Floor
- Carbon Monoxide Detector
- LPG Leak Detector
- Smoke Detector
- Fire Extinguisher
- Powered Solar and Privacy Shades
- Soft-closing Drawers
- Powered Roof Vents
- Central Vacuum System with VacPan® Automatic Dustpan
- Interior Grab Handle at Entry Door
- Egress Windows Throughout Coach

| INTERIOR OPTIONS        |   | 45 FZ |
|-------------------------|---|-------|
| Interior Décor Packages | Haiku   | O     |
|                         | Jewel of the Nile                             | O     |
|                         | Blue Delta® Sweet Home <b>NEW</b>             | O     |
|                         | Blue Delta® Rocker Chic <b>NEW</b>            | O     |
| Upholstery Fabrics      | Ultrafabrics® Tottori Rice Paper <sup>1</sup> | D     |
|                         | Ultrafabrics® Tottori Tatami Mat <sup>2</sup> | D     |
| Cabinetry Color         | Shadow  | O     |
|                         | Sandstone <b>NEW</b>                          | O     |
|                         | White Linen                                   | O     |
|                         | Black Tuffie <b>NEW</b>                       | O     |
|                         | Glazed Canyon Cherry                          | O     |
|                         | Glazed Honey Natural Cherry                   | O     |
|                         | Platinum <b>NEW</b>                           | O     |
| Floor Tiles             | Gemstone Glazed Porcelain Tile <sup>3</sup>   | D     |
|                         | Gunmetal Glazed Porcelain Tile <sup>4</sup>   | D     |

<sup>1</sup> Always paired with Jewel of the Nile or Blue Delta® Rocker Chic Interior Décor Fabric Suites

<sup>2</sup> Always paired with Haiku Interior or Blue Delta® Sweet Home Décor Fabric Suites.

<sup>3</sup> Must be paired with Haiku Interior or Blue Delta® Sweet Home Décor Fabric Suites.

<sup>4</sup> Must be paired with Jewel of the Nile or Blue Delta® Rocker Chic Interior Décor Fabric Suites.

### DRIVER'S COMPARTMENT

- Ultrafabrics® Tottori Power Driver and Passenger Seats
- Dual Driver And Passenger Seat Armrests
- Swivel Bases for Driver and Passenger Seats
- Powered Passenger Seat Footrest
- Integrated Seat Belts on Driver and Passenger Seats
- Lumbar Support on Driver and Passenger Seats
- Cooled and Heated Driver and Passenger Seats
- Tilt and Telescoping Steering Wheel with Integrated Controls
- Adjustable Accelerator and Brake Pedals
- Ergonomic Dash with Carbon Fiber Accents and French-stitched Cover
- Mounted Dash Fans
- Cupholders on Driver and Passenger Side
- Valid™ Liquid Crystal Display Instrument Cluster with Integrated Leveling Controls
- (2) Center Storage Drawers
- Generator Start & Stop Rocker Switch
- USB Dash Receptacles
- 12-Volt Dash Receptacle
- Backlit Dash Rocker Switches
- Passenger Console Wireless Phone Charger
- 7" Passenger Console Advanced Monitor System Touchscreen
- Driver Console Stationary **NEW** Mount Phone Charger
- Driver and Passenger Map Lights
- One-piece Panoramic Windshield
- Single-motor Intermittent Windshield Wipers
- Automatic LED Headlights
- Side-view Cameras <sup>1</sup>
- Color Back-up Camera
- 360° View Camera
- 10" Glass Panel Camera Monitor
- Blind Spot Monitoring System
- Advanced Monitor System featuring Media Center, Bluetooth®, and AM, FM, and Satellite Radio <sup>2</sup>
- Ceiling Mounted Speakers
- JBL® Sound System <sup>3</sup>
- In-dash Navigation System via Advanced Monitor System's 10" Glass Panel Touchscreen
- Overhead Cabinetry with Wooden Panel Doors
- Auxiliary Start Switch
- Concealed Air Horn
- Powered Opening Driver Side Window
- Solid, Non-opening Passenger Side Window
- Powered Solar and Privacy Windshield Shade
- Powered Solar and Privacy Shades on Side Windows

| DRIVER'S COMPARTMENT OPTIONS |  | 45 FZ |
|------------------------------|--|-------|
| Front Overhead TV            |  | O     |

<sup>1</sup> Integrated within side-view mirrors and activated by turn signals.

<sup>2</sup> Includes a 10" Touchscreen LCD monitor for navigation system and entertainment, a 10" camera monitor, and a 7" passenger monitor. Subscription required for satellite radio.

<sup>3</sup> Includes amplifier and (2) subwoofers.

| DINETTE AND LIVING AREA OPTIONS |   | SLEEPS | SEATS | SEATBELTS | 45 FZ |
|---------------------------------|---|--------|-------|-----------|-------|
| Driver Side Furniture           | 80" Air Coil Sofa Bed with Lift TV <sup>1</sup>     | 1      | 3     | 3         | S     |
|                                 | 80" DE Sofa Bed with Lift TV <sup>2</sup>           | 1      | 3     | 3         | O     |
| Passenger Side Dinette          | 75" Dinette with Chairs <sup>3</sup> <b>UPDATED</b> | -      | 2     | -         | S     |
|                                 | 75" Dinette Bar <sup>4</sup>                        | -      | 2     | -         | O     |
|                                 | 75" U-shaped Dinette                                | -      | 4     | 2         | O     |
| Passenger Side Furniture        | 88" DE Sofa Bed <sup>5</sup>                        | 1      | 3     | 3         | S     |
|                                 | 88" Air Coil Sofa Bed <sup>6</sup>                  | 2      | 3     | 3         | O     |
|                                 | 88" Theater Seating                                 | -      | 2     | 2         | O     |
|                                 | Ottoman with Internal Storage <sup>7</sup>          | -      | -     | -         | D     |

<sup>1</sup> Mattress measures 72" x 52" and includes internal pump.

<sup>2</sup> Piece of furniture converts to 73" x 49" sleeping area.

<sup>3</sup> Formerly known as "Dinette Computer Workstation". The printer bump-out was removed for more leg room. The keyboard and printer trays have been converted to a drawer and a fixed shelf to maximize storage. Includes (2) freestanding accent chairs and (2) wooden folding chairs.

<sup>4</sup> Includes (2) freestanding accent chairs and (2) wooden folding chairs.

<sup>5</sup> Piece of furniture converts to 81" x 49" sleeping area.

<sup>6</sup> Mattress measures 72" x 59" and includes internal pump.

<sup>7</sup> Standard unless theater seating option is chosen.

## Specifications, Features, and Options (Cont'd)

KEY : S : Standard Feature | O : Optional Feature; Additional costs may apply | D : Dependent; Availability is dependent on selection of another option | — : Not Available

### KITCHEN

- 22-Cubic Foot Stainless Steel Residential Refrigerator with French Doors and Bottom Freezer <sup>1</sup>
- Decorative Wooden Refrigerator Panel
- 17-Cubic Foot Smart Convection Microwave with Air Fry
- Wolf® Induction Cooktop
- Single Bowl Silgranit Kitchen Sink with Single Lever Faucet and Pull-down Sprayer
- Built-in Soap Dispenser
- InSinkErator® Instant Hot Water Faucet
- Drawer-style Dishwasher
- Galley Overhead Cabinets with Pull-out Drawers
- Panoramic Galley Window
- Expand-An-Island
- LED Countertop Lighting
- Quartz Backsplash
- Quartz Galley Countertop, Sink, and Cooktop Cover

|                     |       |
|---------------------|-------|
| KITCHEN OPTIONS     | 45 FZ |
| 12" Beverage Center | O     |

<sup>1</sup> Refrigerator volume is approximated.

### BEDROOM

- Overhead Cabinets
- Under Bed Storage
- Bedside Windows
- Bed Comforter with Throw Pillows
- Handcrafted Privacy Door
- LED Reading Lights
- Nightstand with Quartz Tops
- Mounted Bedroom TV
- Centralized Entertainment Center <sup>1</sup>
- Decorative Handcrafted
- Wood Ceiling Ring
- Shoe Rack
- Floor-to-ceiling Closet Space
- Safe
- Bedroom Fireplace

|                 |                                       |   |
|-----------------|---------------------------------------|---|
| BEDROOM OPTIONS | 45 FZ                                 |   |
| Mattress        | Memory Foam King Mattress (72" x 80") | S |
|                 | Power Smart King Bed (72" x 80")      | O |
| Bed Slide       | Mounted Headboard                     | S |
|                 | Window at head of Bed                 | O |

<sup>1</sup> Houses Blu-ray™ player, satellite receiver, and cable TV hook-up

### BATHROOM

- (1) Bathroom and (1) Half-bath <sup>1</sup>
- (2) Porcelain Master Bathroom Sinks
- Quartz Lavatory Top
- Solid Surface Shower Walls with Inlaid Tile and Residential Glass Door (34" x 52.5")
- Teak Folding Shower Seat
- Shower Head with Detachable Hand-held Shower Wand
- Shower Skylight
- Shower LED Light with Sliding Cover
- (1) Electric Gravity Flush Toilet
- and (1) Macerator Toilet
- Towel and Toilet Paper Holders
- Medicine Cabinet with Tri-view Vanity Mirror
- Roof Vent Fan
- Base Cabinet

|  |       |
|--|-------|
| BATHROOM OPTIONS                             | 45 FZ |
| Pure Linen Master Bath Cabinets <sup>2</sup> | O     |

<sup>1</sup> All half-baths contain a toilet and a quartz countertop with a single porcelain sink.

<sup>2</sup> Replaces the chosen cabinetry stain used throughout the coach with Pure Linen for the master bathroom.

## What's New Summary - Zephyr

### WHAT'S NEW

- Generation 12 and 13 Paint Schemes
- Voltage and Cardinal Exterior Color Packages
- Sandstone, Platinum, and Black Truffle Cabinetry
- Outdoor Grill Option (Replaces Outdoor Kitchen Option)
- Stainless Steel Wheel Well
- Infinity Woven Floor in Basements
- Pantry Light
- Firefly Integrations Eclipse Module
- Driver Console Stationary Mount Phone Charger
- Blue Delta® Sweet Home and Blue Delta® Rocker Chic Treated Fabric Suites

Because of progressive improvements and specifications, standard and optional equipment are subject to change without notice or obligation. For a complete and up-to-date list of available options and specifications, visit [tiffinmotorhomes.com](http://tiffinmotorhomes.com).

1

YEAR OR 12,000 MILES  
LIMITED WARRANTY

5

YEARS OR 50,000 MILES  
DELAMINATION  
LIMITED WARRANTY

10

YEARS OR 50,000 MILES  
CONSTRUCTION  
LIMITED WARRANTY

1

YEAR COACH  
ROADSIDE SERVICE



ONGOING  
CUSTOMER SUPPORT

FOR SALES CALL 256-356-8661, PARTS & SERVICE CALL 256.356.0261 OR VISIT [TIFFINMOTORHOMES.COM](http://TIFFINMOTORHOMES.COM)  
105 2ND ST NW RED BAY, AL 35582  



**TIFFIN**

MOTORHOMES

All trademarks and logos are owned or used under license by Tiffin Motor Homes, Inc. and include, but are not limited to: TIFFIN®, MANY ADVENTURES, ONE DREAM™, ALLEGRO®, ALLEGRO BREEZE®, ALLEGRO RED®, PHAETON®, ALLEGRO BUS®, ZEPHYR®, WAYFARER®, ROUGHING IT SMOOTHLY®, OPEN ROAD®, POWERGLIDE®, CAHABA®, BYWAY™, CONVOY™, BRONZE™, and associated logos and emblems. Unauthorized use of any trademark of Tiffin Motor Homes, Inc. is strictly prohibited.  
© Copyright 2023 Tiffin Motor Homes, Inc.

For all information concerning the limited warranty provided by Tiffin, please refer to the full written limited warranty set forth on the Tiffin website or held by our authorized dealerships.  
Please note, some interior furnishings not included. Revised: 8/18/23